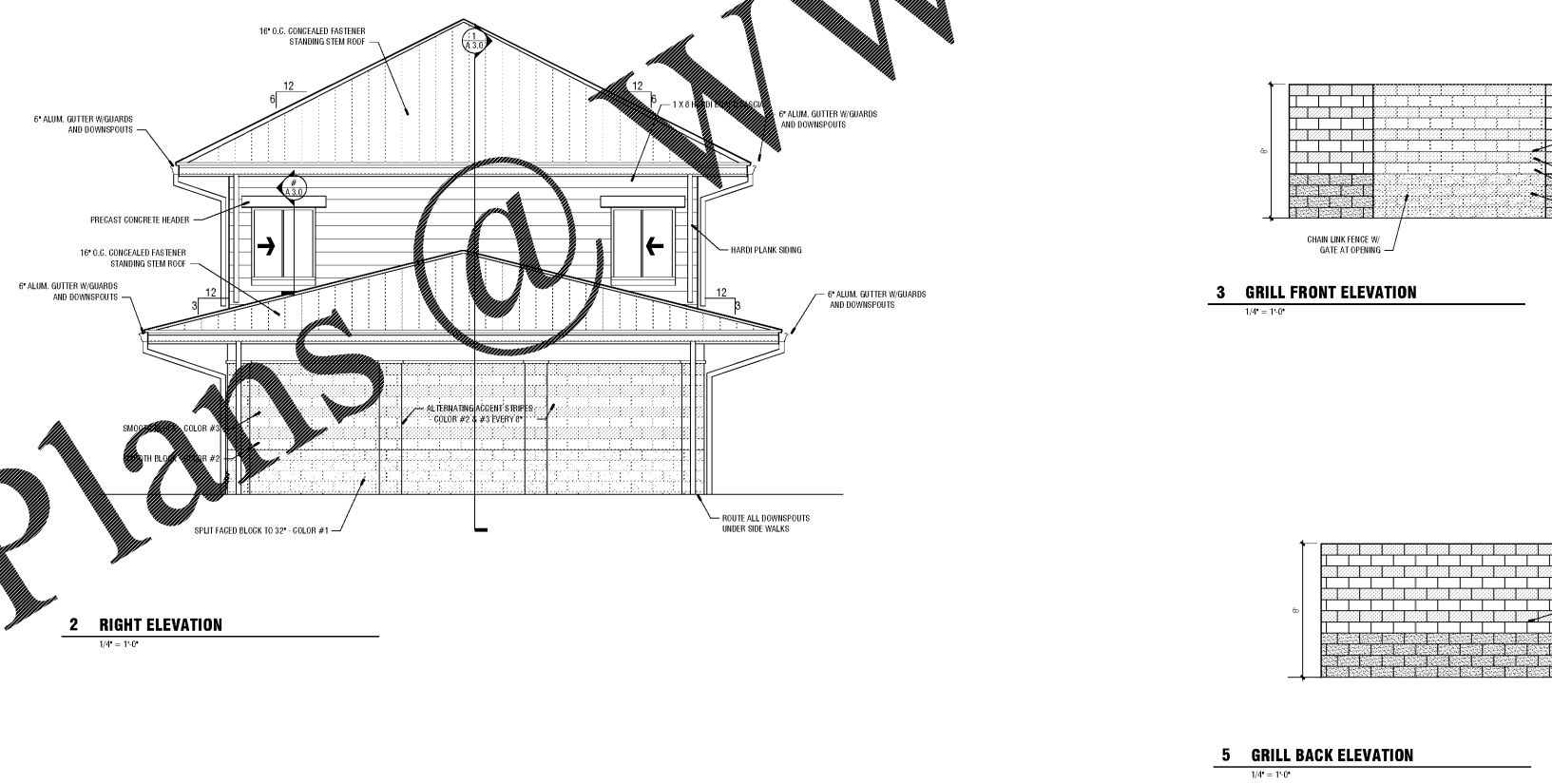
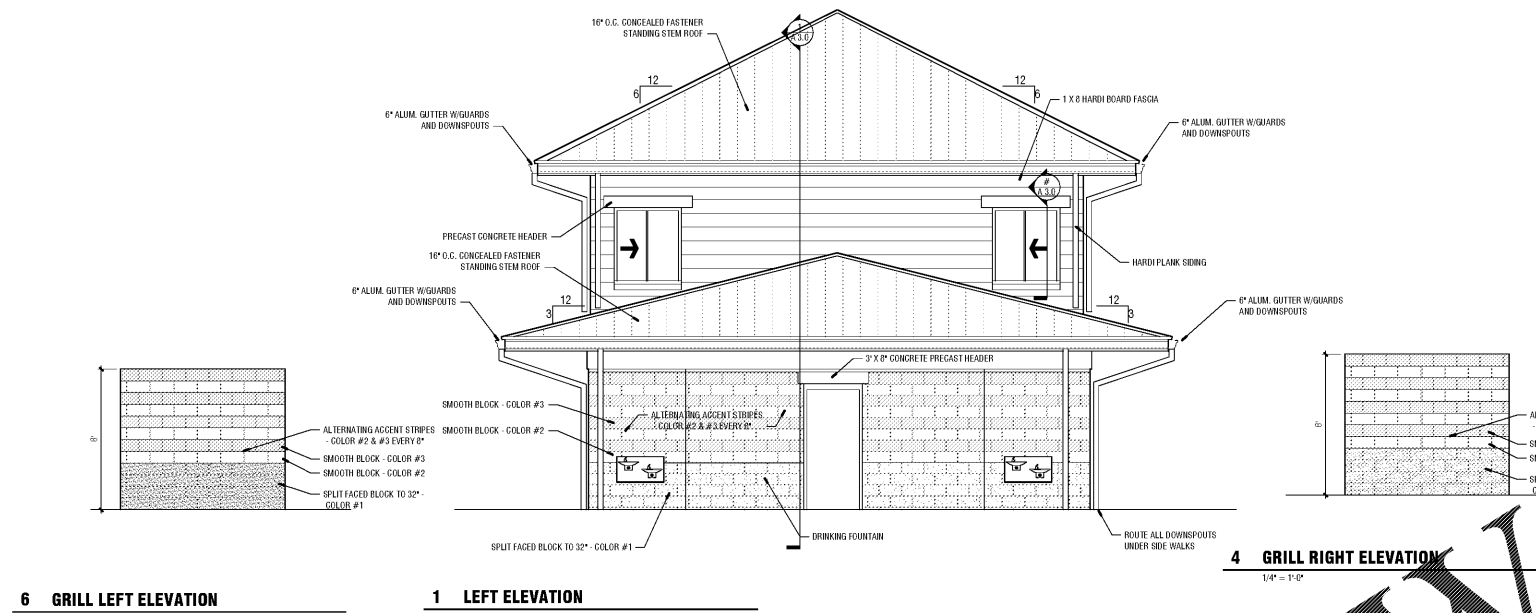


Order Plans @ www.LDILine.com

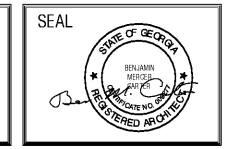


Jun 19 2018 | Z:\Projects\180619 Douglas County Concession\Sheets\A.2.1 EXTERIOR ELEVATIONS (CONT).DWG

REVISION	Number	Date	Remarks	Number	Date	Remarks
X	00-00-00	N/A				

CONSULTANTS

CARTER WATKINS ASSOCIATES ARCHITECTS, INC.
 POST OFFICE BOX 1004
 137 EAST WASHINGTON STREET
 MONROE, GEORGIA 30655
 Fax: 770-267-1064
 email@carterwatkins.com www.carterwatkins.com



DOUGLAS COUNTY BOUNDARY WATERS PARK CONCESSION STAND
 DOUGLASVILLE, GEORGIA

SHEET TITLE:
EXTERIOR ELEVATIONS (CONT.)

PRINTED:

NUMBER:
A 2.1

DATE: 06/19/18 PRINTED