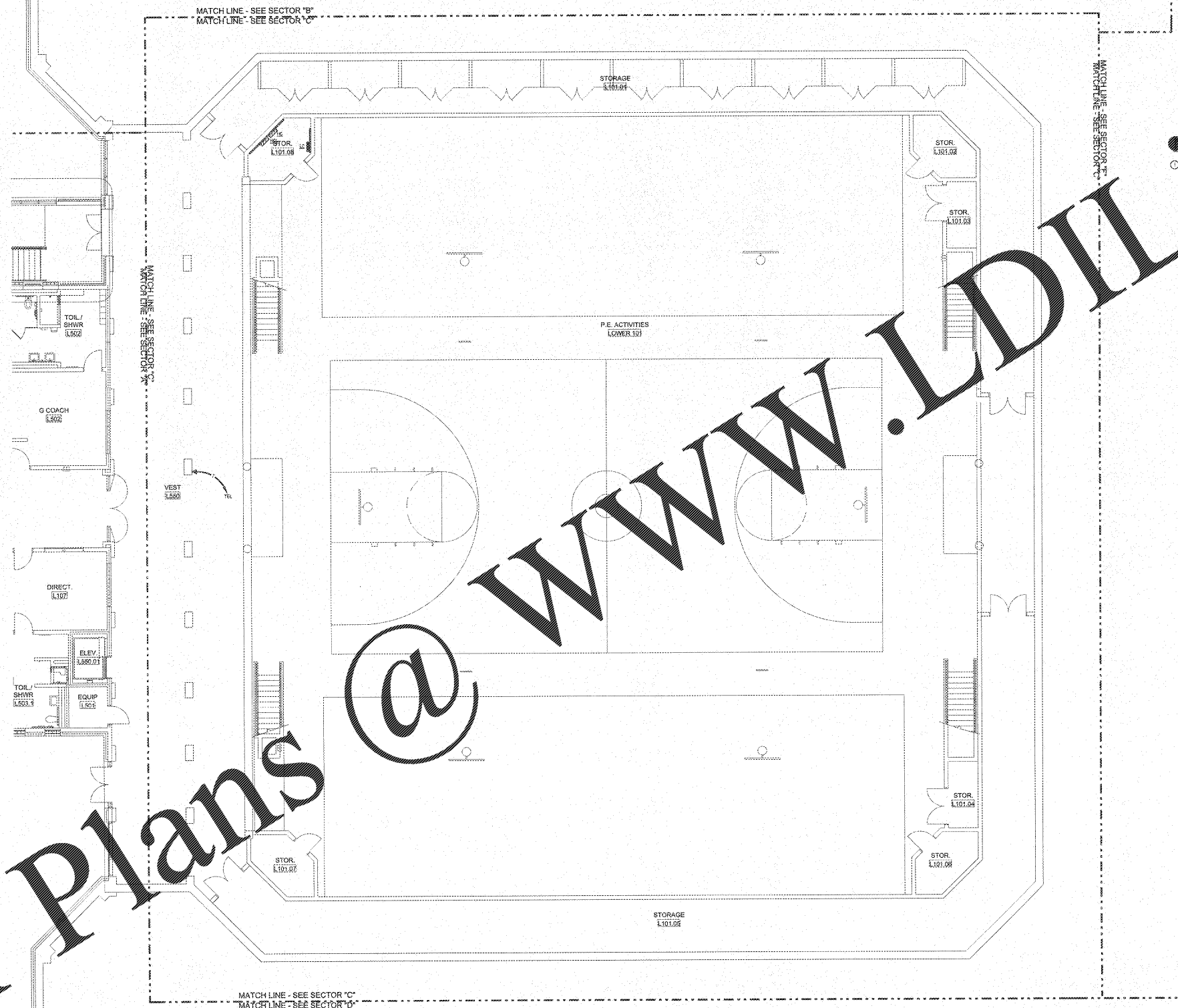
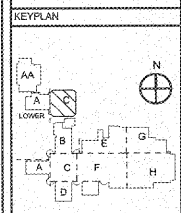


REVISIONS/ISSUANCES		
NO.	DATE	DESCRIPTION



NOTES: THIS SHEET CONTAINS
 ○ GENERAL ROUTE IN CABLES TO BE



AH&P
 CONSULTING ENGINEERS
 ANDREWS, HAIMCOCK & POWELL, INC.
 250 Charter Lane
 Suite 100
 MACON, GEORGIA 31210
 MACON (478) 405-6301
 FAX (478) 405-6210
 WWW.AHPENR.COM



Manley Spangler Smith Architects
 A Professional Corporation

525 East Taylor St.
 P.O. Box 880
 Griffin, Georgia 30224
 Office 770.227.5473
 Fax 770.228.3442

PROJECT:
RENOVATIONS, MODIFICATIONS, & ADDITIONS TO HENRY COUNTY SCHOOLS - GROUP 10 WOODLAND HIGH SCHOOL (ITEM C)

CLIENT:
HENRY COUNTY BOARD OF EDUCATION

SHEET TITLE:
ELECTRICAL NEW WORK LOW VOLTAGE PLAN - SECTOR "C" LOWER LEVEL

DATE: 08.07.18
 SCALE: 1/8"=1'-0"
 DRAWN BY: JLS
 CHECKED BY: HPO
 SHEET NO.: **E306**

NOTE TO CONTRACTOR CONCERNING PROJECT PHASING:
 THE WORK SPECIFIED ON THE DRAWINGS AND SPECIFICATIONS ILLUSTRATES THE COMPLETED CONTRACTUAL REQUIREMENTS. THIS PROJECT IS PHASED IN MULTIPLE PHASES. THE AREA OF EACH PHASE IS DESCRIBED IN THE ARCHITECTURAL DOCUMENTS AND THE CONTRACTOR SHALL RESERVE THESE PHASING REQUIREMENTS. CONTRACTOR SHALL INCLUDE IN HIS BID ALL COSTS REQUIRED TO ACCOMPLISH THE CONTRACT PHASING. THE CONTRACT DOCUMENTS DO NOT DESCRIBE THE SPECIFIC WORK REQUIRED BY THE CONTRACTOR TO REPAIR THE PROJECT IN PHASES, BUT CONTRACTOR SHALL PREPARE PHASING PLAN AND SUBMIT TO ARCHITECT/ENGINEER AND HENRY COUNTY MAINTENANCE DEPARTMENT PRIOR TO BEGINNING WORK.

GENERAL NOTES

- CONTRACTOR SHALL ROUTE VOICE, DATA AND OTHER SYSTEMS IN CONDUIT FROM WALL OUTLET TO ABOVE CORRIDOR CEILING. CABLES SHALL THEN BE ROUTED VIA JUNCTIONS AND EXISTING CABLE TRAY SYSTEM TO DESTINATION. JUNCTIONS SHALL BE INSTALLED ON BOTH SIDES OF CORRIDORS ON 4' CENTERS TO ACCESS EXISTING CABLE TRAY SYSTEM ABOVE CORRIDOR CEILING.
- ALL LOW VOLTAGE SYSTEMS ROUTED OUTSIDE OF BUILDING SHALL HAVE LIGHTNING PROTECTION APPLIED TO COPPER CABLES AS IT ENTERS THE BUILDING.
- ELECTRICAL INSTALLATIONS ON EXISTING WALLS SHALL HAVE CIRCUITRY INSTALLED CONCEALED WITHIN MASONRY. CONTRACTOR SHALL NOT, UNDER ANY CIRCUMSTANCE, STRIKE SURFACE METAL RACEWAY TO INSTALL NEW DEVICES. DEVICES SHALL BE CUT INTO EXISTING MASONRY WITH FLEX CONDUIT FINISHED IN EXISTING WALL FROM ABOVE ACCESSIBLE CEILING.

ELECTRICAL NEW WORK LOW VOLTAGE PLAN - SECTOR "C" LOWER LEVEL
 SCALE: 1/8"=1'-0"

Order Plans @ WWW.LDILine.com