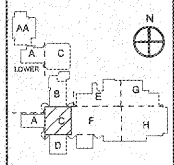


NO.	DATE	DESCRIPTION

KEYPLAN



**AH&P**  
CONSULTING ENGINEERS  
ANDREW HAMMOCK & POWELL, INC.  
250 Charter Lane  
Suite 102  
Macon, Georgia 31210  
Macon (478) 455-8201  
Fax (478) 455-8210  
WWW.AHPENGR.COM



**Manley Spangler Smith Architects**  
A Professional Corporation

425 East Taylor St.  
P.O. Box 990  
Coffey, Georgia 30224  
Office 770.227.5473  
Fax 770.228.3412

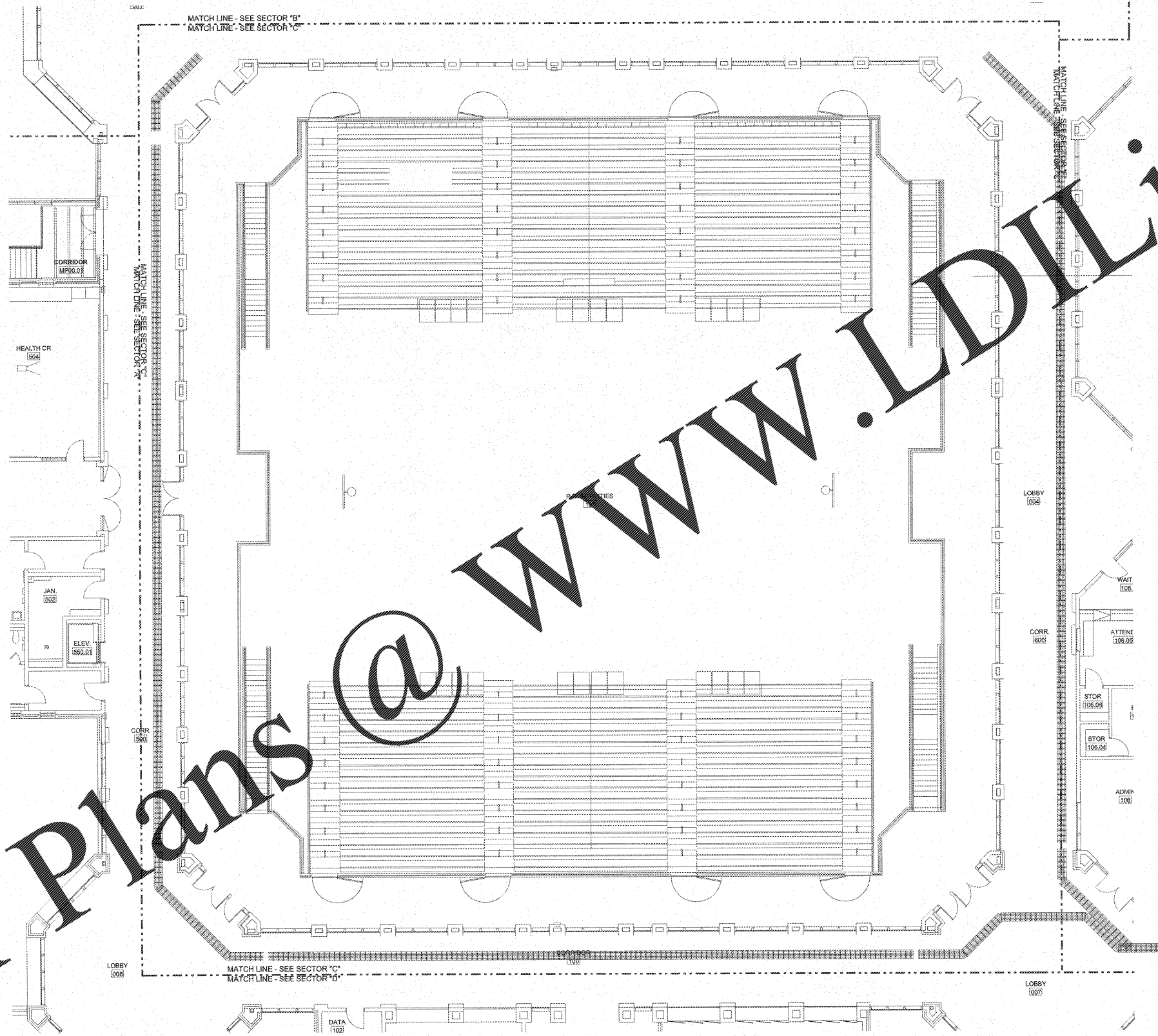
PROJECT:  
RENOVATIONS,  
MODIFICATIONS, &  
ADDITIONS TO HENRY  
COUNTY SCHOOLS -  
GROUP 10  
WOODLAND HIGH SCHOOL  
(ITEM C)

CLIENT:  
HENRY COUNTY  
BOARD OF EDUCATION

SHEET TITLE:  
ELECTRICAL NEW WORK  
LOW VOLTAGE PLAN -  
SECTOR "C" UPPER LEVEL

LU: 08  
P.T.E.: 1,007  
FACILITY CODE: 075-6409  
© 2015 Manley Spangler Smith Architects, P.C.  
PROJECT NUMBER: 201731C  
DATE: 06.07.15  
SCALE: 1/8"=1'-0"  
DRAWN BY: JAS  
CHECKED BY: HMO

SHEET NO.: E305



**NOTE TO CONTRACTOR CONCERNING PROJECT PHASING:**  
THE WORK SPECIFIED ON THE DRAWINGS AND SPECIFICATIONS ILLUSTRATES THE COMPLETED CONTRACTUAL REQUIREMENTS. THIS PROJECT IS PHASED IN MULTIPLE PHASES. THE AREA OF EACH PHASE IS DESCRIBED IN THE ARCHITECTURAL DOCUMENTS AND THE CONTRACTOR SHALL REVIEW THESE PHASING REQUIREMENTS. CONTRACTOR SHALL INCLUDE IN HIS SOI ALL COSTS REQUIRED TO ACCOMPLISH THE CONTRACT IN PHASES. THE CONTRACT DOCUMENTS DO NOT DESCRIBE THE SPECIFIC WORK REQUIRED BY THE CONTRACTOR TO REPERFORM THE PROJECT IN PHASES, BUT CONTRACTOR SHALL PREPARE PHASING PLAN AND SUBMIT TO ARCHITECT/ENGINEER AND HENRY COUNTY MAINTENANCE DEPARTMENT PRIOR TO BEGINNING WORK.

**GENERAL NOTES**  
1. CONTRACTOR SHALL ROUTE VOICE, DATA AND OTHER SYSTEMS IN CONDUIT FROM WALL OUTLET TO ABOVE CORRIDOR CEILING. CABLING SHALL THEN BE ROUTED VIA HANGING AND EXISTING CABLE TRAY SYSTEM DISTRIBUTION JACKBOXES SHALL BE INSTALLED ON BOTH SIDES OF CORRIDORS ON 4' CENTERS TO ACCESS EXISTING CABLE TRAY SYSTEM ABOVE CORRIDOR CEILING.  
2. ALL LOW VOLTAGE SYSTEMS ROUTED OUTSIDE OF BUILDING SHALL HAVE LIGHTNING PROTECTION APPLIED TO COPPER CABLING AS IT ENTERS THE BUILDING.  
3. ELECTRICAL INSTALLATIONS ON EXISTING WALLS SHALL HAVE CONDUITS INSTALLED CONCEALED WITHIN MASONRY. CONTRACTOR SHALL NOT LAGGER ANY CIRCUMFERENCE. UTILIZE SURFACE METAL RACEWAY TO INSTALL NEW DEVICES. BOXES SHALL BE CLIP INTO EXISTING MASONRY WITH FLEXI CONDUIT FINISH IN EXISTING WALL FROM ABOVE ACCESSIBLE CEILING.

ELECTRICAL NEW WORK LOW VOLTAGE PLAN - SECTOR "C" UPPER LEVEL  
SCALE: 1/8"=1'-0"

Order Plans @ [www.LDLine.com](http://www.LDLine.com)