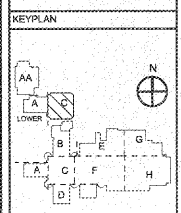


NOTES:
 ① EXISTING GE. TYPE ADF, 120/208V, 3PH, 4W, PANELBOARD.
 ② EXISTING GE. TYPE ADF, 277/480V, 3PH, 4W, PANELBOARD.

REVISIONS/ISSUANCES		
NO.	DATE	DESCRIPTION



AH&P
 CONSULTING ENGINEERS
 ANDREWS, HAMMOCK & POWELL, INC.
 281 Charter Lane
 Suite 500
 MACON, GEORGIA 31210
 MACON (478) 465-8301
 FAX (478) 465-8210
 WWW.AHPENGR.COM



Manley Spangler Smith Architects
 A Professional Corporation

525 East Taylor St.
 P.O. Box 886
 Griffin, Georgia 30224
 Office 770.227.5473
 Fax 770.228.3442

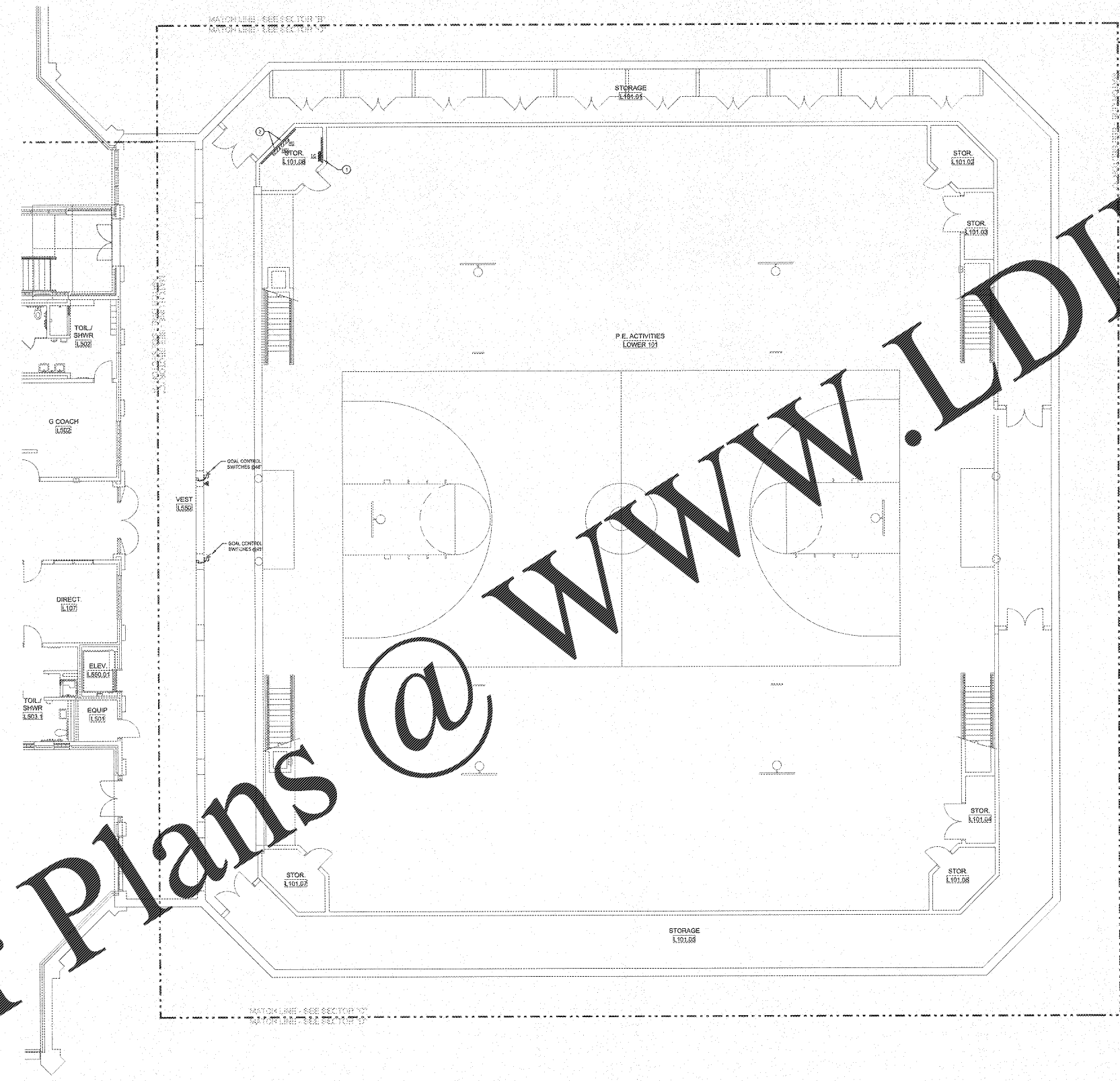
PROJECT:
 RENOVATIONS,
 MODIFICATIONS, &
 ADDITIONS TO HENRY
 COUNTY SCHOOLS -
 GROUP 10
 WOODLAND HIGH SCHOOL
 (ITEM C)

CLIENT:
 HENRY COUNTY
 BOARD OF EDUCATION

SHEET TITLE:
 ELECTRICAL NEW WORK
 POWER PLAN - SECTOR
 "C" LOWER LEVEL

LUJ - 88
 F.T.E. : 1.887
 FACILITY CODE: 675-0108
 © 2018 Manley Spangler Smith Architects, P.C.
 PROJECT NUMBER: 201721C
 DATE: 08/07/18
 SCALE: 1/8"=1'-0"
 DRAWN BY: AJS
 CHECKED BY: NHD

SHEET NO.: E206



GENERAL NOTES

- WHERE CIRCUITS ARE FOUND UTILIZING CONDUIT SYSTEM FOR GROUNDING WITH THE CONTRACTOR SHALL TEST AND VERIFY CONTINUITY OF THIS GROUNDING PATH. IF THE GROUNDING PATH IS DETERMINED TO BE NON-CONTINUOUS THE CONTRACTOR SHALL REMEDY THAT BY PROVIDING #12 GROUNDING CONDUCTOR IN EXISTING CONDUIT BACK TO PANEL.
- ELECTRICAL INSTALLATIONS ON EXISTING WALLS SHALL HAVE CIRCUITS INSTALLED CONCEALED WITHIN WALLS. CONTRACTOR SHALL NOT, UNDER ANY CIRCUMSTANCES, UTILIZE SURFACE METAL RACEWAY TO INSTALL NEW DEVICES SLIP VOLTAGE OR LOW VOLTAGE. ISSUES SHALL BE CUT INTO EXISTING MASONRY WITH FLEX CONDUIT FISHED IN EXISTING WALL FROM ABOVE ACCESSIBLE CEILING.
- LOW VOLTAGE SYSTEMS OUTLETS SHOWN FOR INSTALLATION COORDINATION PURPOSES ONLY. SEE APPLICABLE LOW VOLTAGE FLOOR PLAN FOR OTHER REQUIREMENTS.

NOTE TO CONTRACTOR CONCERNING PROJECT PHASING:
 THE WORK SPECIFIED ON THE DRAWINGS AND SPECIFICATIONS ILLUSTRATES THE COMPLETED CONTRACTUAL REQUIREMENTS. THIS PROJECT IS PHASED IN MULTIPLE PHASES. THE AREA OF EACH PHASE IS DESCRIBED IN THE ARCHITECTURAL DOCUMENTS AND THE CONTRACTOR SHALL REVIEW THESE PHASING REQUIREMENTS. CONTRACTOR SHALL INCLUDE IN HIS BID ALL COSTS REQUIRED TO ACCOMPLISH THE CONTRACT IN PHASES. THE CONTRACT DOCUMENTS DO NOT DESCRIBE THE SPECIFIC WORK REQUIRED BY THE CONTRACTOR TO PERFORM THE PROJECT IN PHASES, BUT CONTRACTOR SHALL PHASING PHASE PLAN AND SUBMIT TO ARCHITECT/ENGINEER AND HENRY COUNTY MAINTENANCE DEPARTMENT PRIOR TO BEGINNING WORK.

ELECTRICAL NEW WORK POWER PLAN - SECTOR "C" LOWER LEVEL
 SCALE: 1/8"=1'-0"

Order Plans @