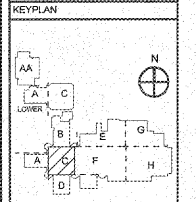


NOTES: (POWER PLAN ONLY)

- ① CONTRACTOR SHALL ROUTE 200V, 1PH, 3W TO DESIGNATED PANEL, PROVIDE 200V BREAKER FOR EACH CIRCUIT IN PANEL AND MAKE CONNECTIONS.
- ② COORDINATE LOCATION OF FLOORING BASKETBALL GOAL MOTOR WITH ARCHITECT. ROUTE 24" CONDUIT AS SHOWN FOR GOAL OPERATOR SWITCHES LOCATED ON COURT LEVEL.

REVISIONS/ISSUANCES		
NO.	DATE	DESCRIPTION



AH&P
CONSULTING ENGINEERS
ANDREWS, HANCOCK & POWELL, INC.
250 Chamber Lane
Suite 100
Macon, Georgia 31210
Macon (478) 465-8301
FAX (478) 465-8210
WWW.AHPENR.COM



Manley Spangler Smith Architects
A Professional Corporation
525 East Taylor St.
P.O. Box 880
Griffin, Georgia 30224
Office 770.227.5473
Fax 770.228.3442

PROJECT: RENOVATIONS, MODIFICATIONS, & ADDITIONS TO HENRY COUNTY SCHOOLS - GROUP 10 WOODLAND HIGH SCHOOL (ITEM C)
CLIENT: HENRY COUNTY BOARD OF EDUCATION

SHEET TITLE: ELECTRICAL NEW WORK POWER PLAN - SECTOR "C" UPPER LEVEL
DATE: 08.07.18
SCALE: 1/8"=1'-0"
DRAWN BY: JAS
CHECKED BY: NHO

PROJECT NUMBER: 201710-C
DATE: 08.07.18
SCALE: 1/8"=1'-0"
DRAWN BY: JAS
CHECKED BY: NHO
SHEET NO.: E205

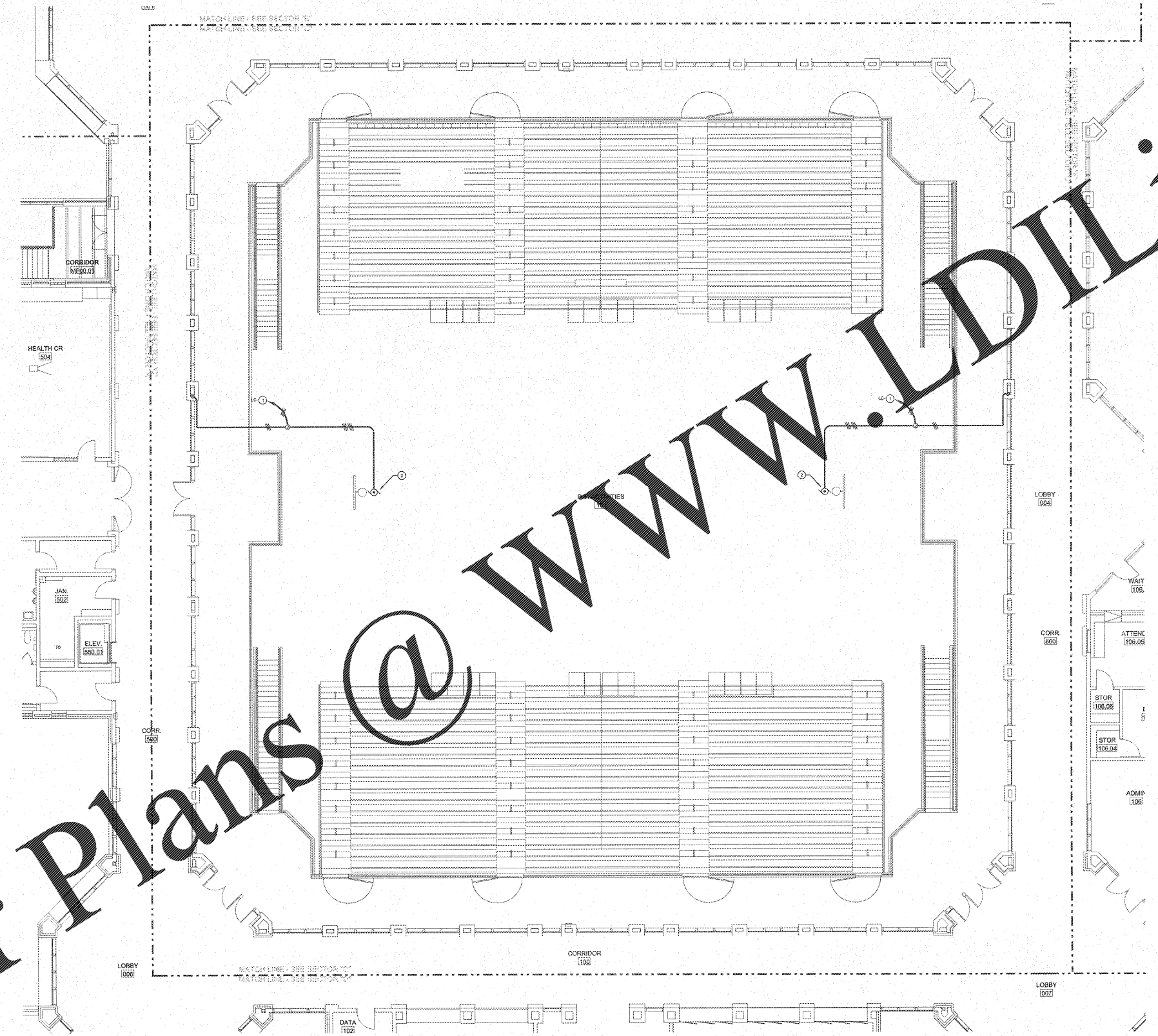
GENERAL NOTES

1. GROUNDING CIRCUITS ARE TO BE INSTALLED FOR GROUNDING PATH. THE CONTRACTOR SHALL TEST AND VERIFY CONTINUITY OF THE GROUNDING PATH. IF THE EXISTING GROUNDING PATH IS DETERMINED TO BE NON-COMPLIANT, THE CONTRACTOR SHALL REMEDY THAT BY PROVIDING HIS GROUNDING CONDUCTOR IN EXISTING CONDUIT BACK TO PANEL.
2. ELECTRICAL INSTALLATIONS ON EXISTING WALLS SHALL HAVE CIRCUITS INSTALLED CONCEALED WITHIN MASONRY. CONTRACTOR SHALL NOT, UNDER ANY CIRCUMSTANCES, UTILIZE SURFACE METAL RACEWAY TO INSTALL NEW DEVICES DUNE VOLTAGE OR LOW VOLTAGE. THESE SHALL BE CUT INTO EXISTING MASONRY WITH FLEX CONDUIT FIBERS IN EXISTING DRILL FROM ABOVE ACCESSIBLE CEILING.
3. LOW VOLTAGE SYSTEMS OUTLETS SHOWN FOR INSTALLATION COORDINATION PURPOSES ONLY. SEE APPLICABLE LOW VOLTAGE FLOOR PLAN FOR OTHER REQUIREMENTS.

NOTE TO CONTRACTOR CONCERNING PROJECT PHASING:

THE WORK SPECIFIED ON THE DRAWINGS AND SPECIFICATIONS ILLUSTRATES THE COMPLETED CONTRACTUAL REQUIREMENTS. THIS PROJECT IS PHASED IN MULTIPLE PHASES. THE AREA OF EACH PHASE IS DESCRIBED IN THE ARCHITECTURAL DOCUMENTS AND THE CONTRACTOR SHALL REVIEW THESE PHASING REQUIREMENTS. CONTRACTOR SHALL INCLUDE IN HIS BID ALL COSTS REQUIRED TO ACCOMPLISH THE CONTRACT IN PHASES. THE CONTRACT DOCUMENTS DO NOT DESCRIBE THE SPECIFIC WORK REQUIRED BY THE CONTRACTOR TO PERFORM THE PROJECT IN PHASES. BUT CONTRACTOR SHALL PREPARE PHASING PLAN AND SUBMIT TO ARCHITECT/ENGINEER AND HENRY COUNTY MAINTENANCE DEPARTMENT PRIOR TO BEGINNING WORK.

ELECTRICAL NEW WORK POWER PLAN - SECTOR "C" UPPER LEVEL
SCALE: 1/8"=1'-0"



Order Plans @ www.LDLine.com