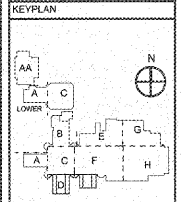


WWW.LDLINE.COM

Order Plans @

NO.	DATE	DESCRIPTION



AH&P
 CONSULTING ENGINEERS
 ANDREWS, HARMON & PONELL, INC.
 225 Charter Lane
 Suite 100
 Macon, Georgia 31210
 Macon (478) 485-8210
 Fax (478) 485-8210
 WWW.AHPENGR.COM



Manley Spangler Smith Architects
 A Professional Corporation

625 East Taylor St.
 P.O. Box 899
 Griffin, Georgia 30224
 Office 770.227.5473
 Fax 770.228.3442

PROJECT: **REVISIONS, MODIFICATIONS, & ADDITIONS TO HENRY COUNTY SCHOOLS - GROUP 10 WOODLAND HIGH SCHOOL (ITEM C)**

CLIENT: **HENRY COUNTY BOARD OF EDUCATION**

SHEET TITLE: **ELECTRICAL NEW WORK LIGHTING PLAN - SECTOR "D"**

DATE: 08.07.18
 SCALE: 1/8"=1'-0"
 DRAWN BY: AJS
 CHECKED BY: MRO

SHEET NO.: **E107**

- NOTES: (THIS SHEET ONLY)**
- GENERAL: ALL EMERGENCY EGRESS LIGHT FIXTURES, ELEVATOR NORMAL POWER SENSOR CIRCUITS, AND EXIT SIGNS SHALL BE UNBATTERED.
 - GENERAL: CLASSROOM LIGHTS SHALL SWITCH FRONT TWO ROWS OF LIGHTS, CLOSEST TO MARKER BOARD AND INTERMEDIATE PROJECTOR ON ONE SWITCH AND BACK ROW OF LIGHTS ON OTHER FOR CLASSROOM HI WIDE LIGHTING. EXISTING LIGHTING FIXTURES ARE AS SHOWN IN CLASSROOMS.
 - INTERCEPT EXISTING LIGHTING CABLES IN MEDIUM CEILING LIGHTING JUNCTION BOXES TO PROVIDE ROW SWITCHING AS NOTED. UTILIZE #12, #14, #16, #18 TO EXTEND AND MAKE CONNECTION TO EXISTING 277V LIGHTING CIRCUIT.
 - PROVIDE NEW SWITCHES IN EXISTING RECESSED SWITCH LOCATION. CUT, PATCH AND PAINT WALLS TO INSTALL NEW RECESS-GRID SWITCHES FOR ADDITIONAL SWITCH IN EXISTING RECESS. UTILIZE EXISTING HI-WALL RACEWAY SYSTEM TO ROUTE NEW CONDUCTORS FOR ROW SWITCHING.
 - PROVIDE NEW LIGHT SWITCH CONDUCTOR IN EXISTING 1/2" FACEWAY FOR ROW SWITCHING AS NOTED. THE NEW CONDUCTOR SHALL BE ROUTED WITH THE EXISTING CONDUCTORS TO REMAIN IN PLACE. PROTECT EXISTING CONDUCTORS DURING INSTALLATION.
 - PROVIDE LINE VOLTAGE OCCUPANCY SENSOR AS SHOWN. INTERCEPT EXISTING CIRCUIT UTILIZING #12 #14, 1/2". MAKE ALL CONNECTIONS.

GENERAL LIGHTING NOTE

UNLESS OTHERWISE NOTED, ALL LIGHTING SHALL BE INSTALLED IN ACCORDANCE WITH THE IBC AND NFPA 70. EXISTING LIGHTING SHALL BE REMOVED AND REWIRING SHALL BE PERFORMED TO ACCOMMODATE THE NEW LIGHTING. THE CONTRACTOR SHALL BE RESPONSIBLE FOR OBTAINING ALL NECESSARY PERMITS AND APPROVALS FROM THE LOCAL AUTHORITIES. THE CONTRACTOR SHALL BE RESPONSIBLE FOR OBTAINING ALL NECESSARY PERMITS AND APPROVALS FROM THE LOCAL AUTHORITIES. THE CONTRACTOR SHALL BE RESPONSIBLE FOR OBTAINING ALL NECESSARY PERMITS AND APPROVALS FROM THE LOCAL AUTHORITIES.

NOTE TO CONTRACTOR CONCERNING PROJECT PHASING:

THE WORK SHOWN ON THIS DRAWING AND SPECIFICATIONS ILLUSTRATES THE COMPLETED CONTRACTUAL REQUIREMENTS. THIS PROJECT IS PHASED IN MULTIPLE PHASES. THE AREA OF EACH PHASE IS DESCRIBED IN THE APPROPRIATE DOCUMENTS AND THE CONTRACTOR SHALL REVIEW THESE PHASING REQUIREMENTS. CONTRACTOR SHALL INCLUDE IN HIS BID ALL COSTS REQUIRED TO ACCOMMODATE THE CONTRACT IN PHASES. THE CONTRACT DOCUMENTS DO NOT DESCRIBE THE SPECIFIC WORK REQUIRED BY THE CONTRACTOR TO PREPARE THE PROJECT IN PHASES. THE CONTRACTOR SHALL PREPARE PHASING PLAN AND SUBMIT TO ARCHITECT/ENGINEER AND HENRY COUNTY MAINTENANCE DEPARTMENT PRIOR TO BEGINNING WORK.

ELECTRICAL NEW WORK LIGHTING PLAN - SECTOR "D"
 SCALE: 1/8"=1'-0"