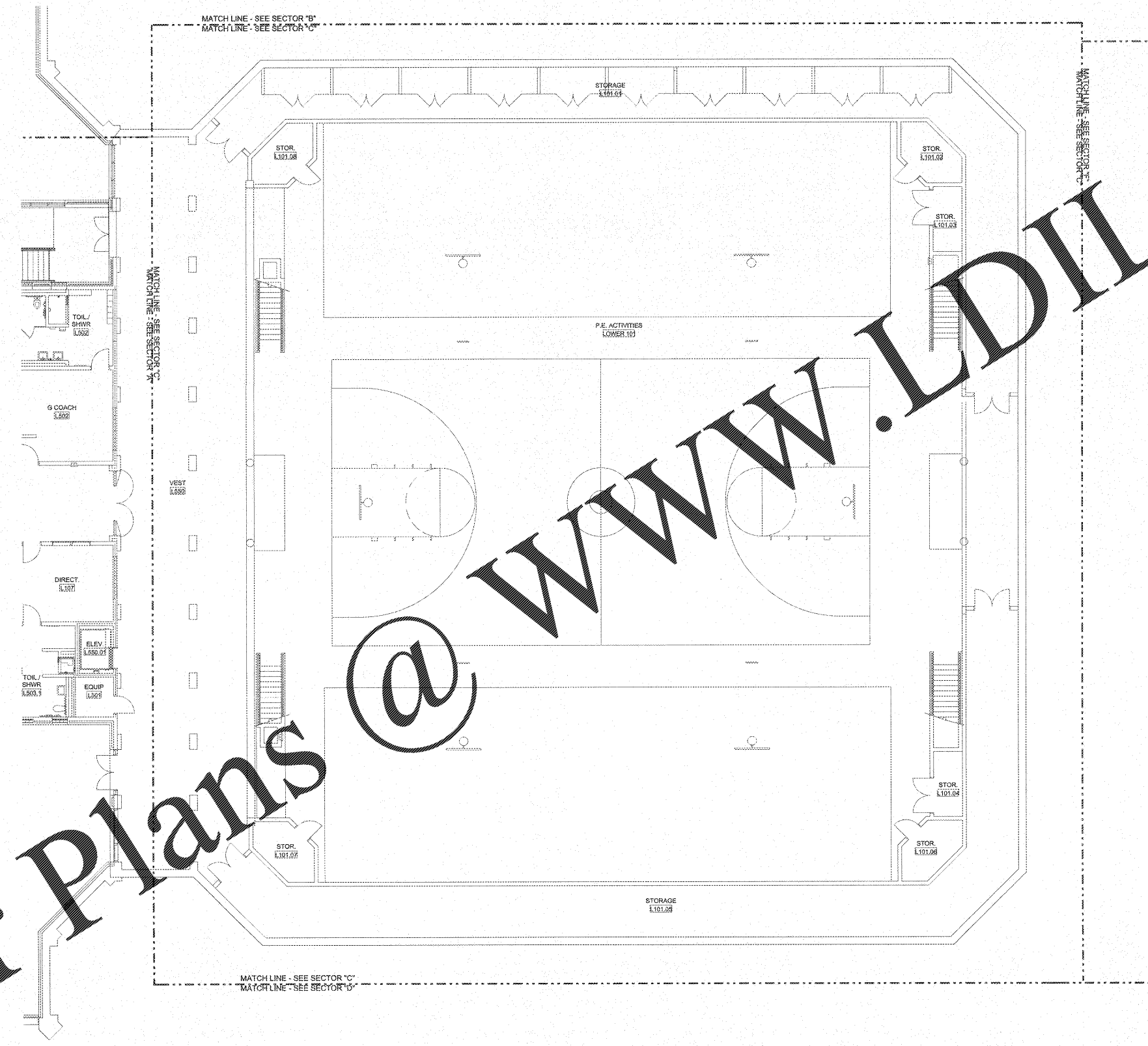


NOTE TO CONTRACTOR CONCERNING PROJECT PHASING:

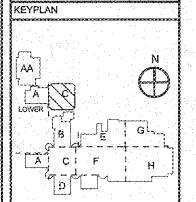
THE WORK SPECIFIED ON THE DRAWINGS AND SPECIFICATIONS ILLUSTRATES THE COMPLETED CONTRACTUAL REQUIREMENTS. THIS PROJECT IS PHASED IN MULTIPLE PHASES. THE AREA OF EACH PHASE IS DESCRIBED IN THE SPECIFIED DRAWING DOCUMENTS AND THE CONTRACTOR SHALL REVIEW THESE PHASING REQUIREMENTS. CONTRACTOR SHALL INCLUDE IN HIS BID ALL COSTS REQUIRED TO ACCOMPLISH THE CONTRACT PHASES. THE CONTRACT DOCUMENTS DO NOT DESCRIBE THE SPECIFIC WORK REQUIRED BY THE CONTRACTOR TO PERFORM THIS PROJECT IN PHASES, BUT CONTRACTOR SHALL PREPARE PHASING PLAN AND SUBMIT TO ARCHITECT/ENGINEER AND HENRY COUNTY MAINTENANCE DEPARTMENT PRIOR TO BEGINNING WORK.

GENERAL LIGHTING NOTE

UNDER THIS PROJECT OCCUPANCY SENSORS SHALL BE INSTALLED. EXISTING 277V LIGHTING CIRCUITS TO THIS BUILDING SHALL BE UTILIZED TO POWER EXISTING LIGHTING. SOME AREAS REQUIRE REWORK OF LIGHTING CIRCUIT WITHIN SPACES WHILE OTHERS MAY CONNECT DIRECTLY TO EXISTING BATTCHED CIRCUITS. EXISTING CONDUIT AND WIRING MAY BE UTILIZED WHERE IT MEETS THIS SPECIFICATION.



REVISIONS/ISSUANCES		
NO.	DATE	DESCRIPTION



AH&P CONSULTING ENGINEERS
 ANDREWS, HARRISON & POWELL, INC.
 255 Charter Lane
 Suite 100
 MACON, GEORGIA 31210
 MACON (478) 455-8301
 FAX (478) 455-8210
 WWW.AHPENGR.COM



Manley Spangler Smith Architects
 A Professional Corporation

525 East Taylor St.
 P.O. Box 500
 Griffin, Georgia 30224
 Office 770.227.5473
 Fax 770.226.5442

PROJECT: RENOVATIONS, MODIFICATIONS, & ADDITIONS TO HENRY COUNTY SCHOOLS - GROUP 10 WOODLAND HIGH SCHOOL (ITEM C)

CLIENT: HENRY COUNTY BOARD OF EDUCATION

SHEET TITLE: ELECTRICAL NEW WORK LIGHTING PLAN - SECTOR "C" LOWER LEVEL

LUU - 88
 P.T.2 - 1.887
 FACILITY CODE: 476-6408
 © 2018 Manley Spangler Smith Architects, P.C.
 PROJECT NUMBER: 201731C
 DATE: 06.07.18
 SCALE: 1/8"=1'-0"
 DRAWN BY: AUS
 CHECKED BY: NPT

SHEET NO.: E106

ELECTRICAL NEW WORK LIGHTING PLAN - SECTOR "C" LOWER LEVEL
 SCALE: 1/8"=1'-0"

Order Plans @