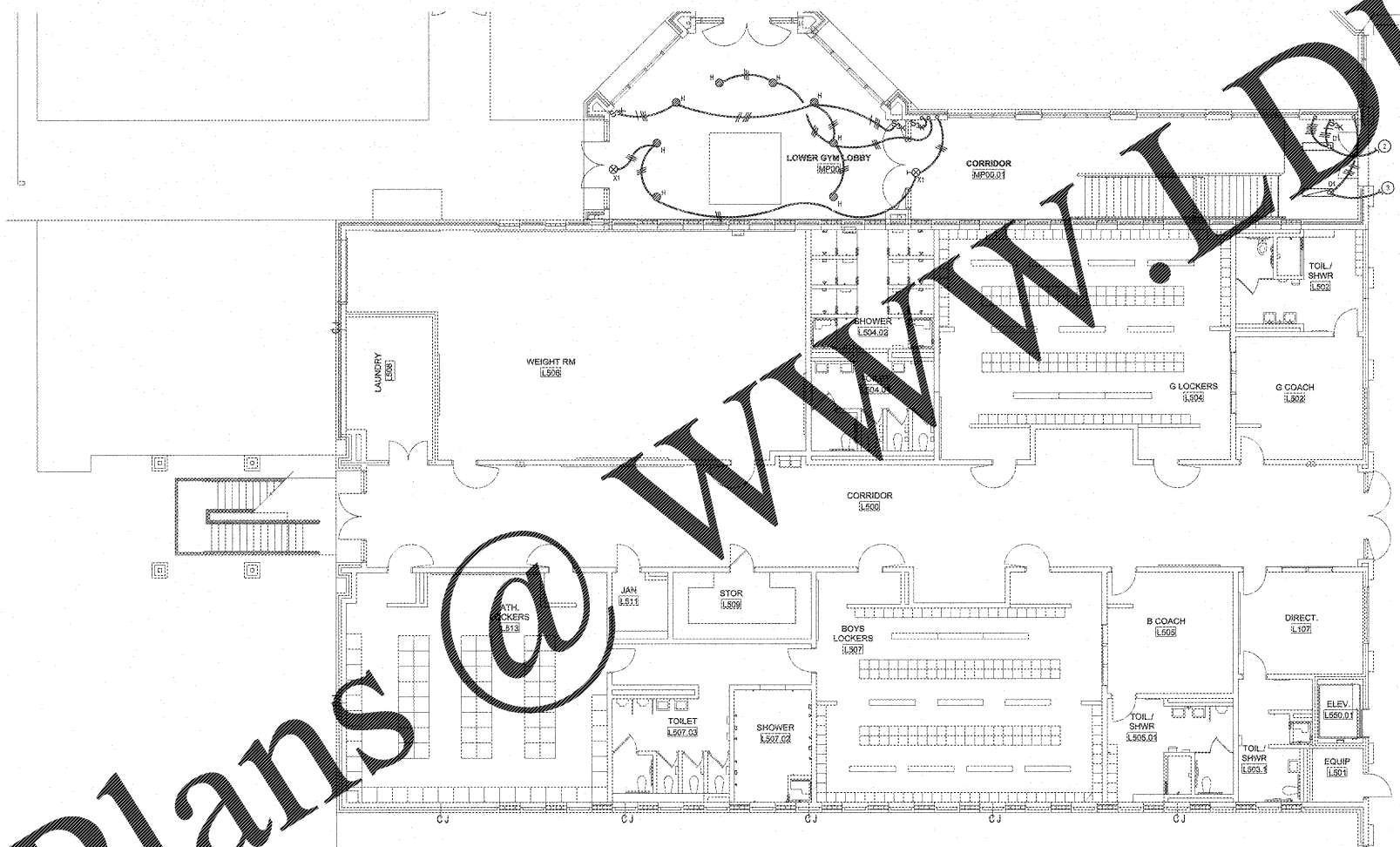


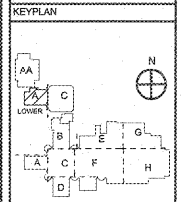
Order Plans @

WWW.LDILine.com



- NOTES: (THIS SHEET ONLY)**
- ① GENERAL: ALL EMERGENCY EGRESS LIGHT FIXTURES, ELOU NORMAL POWER SENSING CIRCUIT, AND EXIT SIGNS SHALL BE UNWITCHED.
  - ② CONTRACTOR SHALL UTILIZE #12, #10, 12°C AND MAKE CONNECTIONS TO EXISTING 277V LIGHTING CIRCUIT.
  - ③ CONTRACTOR SHALL UTILIZE #12, #10, 12°C AND MAKE CONNECTIONS TO EXISTING 277V EGRESS LIGHTING CIRCUIT.

| REVISIONS/ISSUANCES |      |             |
|---------------------|------|-------------|
| NO.                 | DATE | DESCRIPTION |
|                     |      |             |
|                     |      |             |
|                     |      |             |



**AH&P**  
CONSULTING ENGINEERS  
ANDREWS, HARMON & POWELL, INC.  
250 Charter Lane  
Suite 100  
MACON, GEORGIA 31210  
MACON (478) 465-8311  
FAX (478) 465-8210  
WWW.AHPEMER.COM



**Manley Spangler Smith Architects**  
A Professional Corporation

525 East Taylor St.  
P.O. Box 860  
Cuthbert, Georgia 30224  
Office 770.227.5473  
Fax 770.228.3442

PROJECT:  
RENOVATIONS,  
MODIFICATIONS, &  
ADDITIONS TO HENRY  
COUNTY SCHOOLS -  
GROUP 10  
WOODLAND HIGH SCHOOL  
(ITEM C)

CLIENT:  
HENRY COUNTY  
BOARD OF EDUCATION

SHEET TITLE:  
ELECTRICAL NEW WORK  
LIGHTING PLAN -  
SECTOR "A" LOWER  
LEVEL

1/11 - BP  
F.T.E. - 1,587  
FACILITY CODE: 675-6408

© 2018 Manley Spangler Smith Architects, PC  
PROJECT NUMBER: 2017731C  
DATE: 06.07.18  
SCALE: 1/8"=1'-0"  
DRAWN BY: ASJ  
CHECKED BY: NHD

SHEET NO.:  
E102

**ELECTRICAL NEW WORK LIGHTING PLAN - SECTOR "A" LOWER LEVEL**  
SCALE: 1/8"=1'-0"

**NOTE TO CONTRACTOR CONCERNING PROJECT PHASING:**  
THE WORK SPECIFIED ON THE DRAWINGS AND SPECIFICATIONS ILLUSTRATED THE COMPLETED CONTRACTUAL REQUIREMENTS. THIS PROJECT IS PHASED IN MULTIPLE PHASES. THE AREA OF EACH PHASE IS DESCRIBED IN THE ARCHITECTURAL DOCUMENTS AND THE CONTRACTOR SHALL REVIEW THESE PHASING REQUIREMENTS. CONTRACTOR SHALL INCLUDE IN BIDDING ALL COSTS REQUIRED TO ACCOMPLISH THE CONTRACT IN PHASES. THE CONTRACT DOCUMENTS DO NOT DESCRIBE THE SPECIFIC WORK REQUIRED BY THE CONTRACTOR TO PERFORM THE PROJECT IN PHASES, BUT CONTRACTOR SHALL PREPARE PHASING PLAN AND SUBMIT TO ARCHITECT/ENGINEER AND HENRY COUNTY MAINTENANCE DEPARTMENT PRIOR TO BEGINNING WORK.

**GENERAL LIGHTING NOTE**  
UNDER THIS PROJECT OCCUPANCY SENSORS SHALL BE INSTALLED. EXISTING 277V LIGHTING CIRCUITS WITHIN BUILDING SHALL BE UTILIZED TO POWER EXISTING LIGHTING. SOME AREAS REQUIRE REWORK OF LIGHTING CIRCUIT WITHIN SPACES WHILE OTHERS MAY CONNECT DIRECTLY TO EXISTING SWITCHED CIRCUITS. EXISTING CONDUIT AND TRUNKING MAY BE UTILIZED WHERE IT MEETS THE SPECIFICATION.