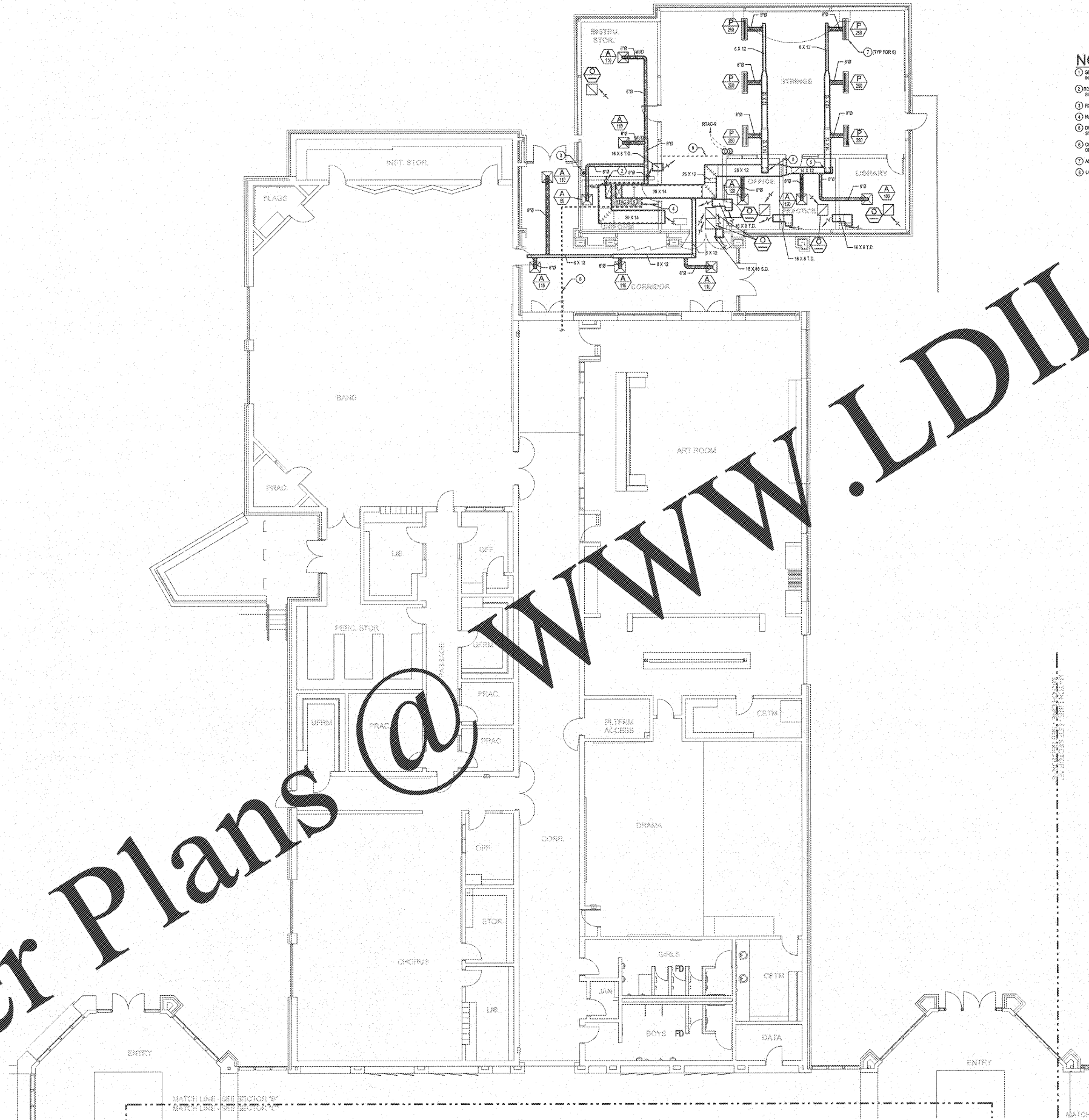


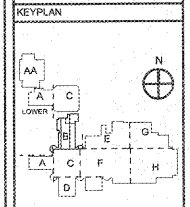
Order Plans @



NOTES: (THIS SHEET ONLY)

- ① GENERAL: PROVIDE SHEET METAL 90 DEGREE ELBOW AT ALL CEILING GRILLERS THAT ARE CONNECTED TO FLEX DUCT AS SHOWN IN CEILING GRILLER DUCT CONNECTION DETAIL.
- ② ROUTE 1" SLOPED PVC CONDENSATE DRAIN PIPING FROM RTAC TO ROOF DRAIN. SUPPORT ATOP CONDENSATE SUPPORTS AS SHOWN IN CONDENSATE PIPE SUPPORT ON ROOF DETAIL.
- ③ RCP DRAIN. SEE PLUMBING DRAWINGS FOR EXACT LOCATION.
- ④ MAINTAIN MINIMUM 36" FROM EDGE OF RTAC TO HIGH WALL.
- ⑤ DUCT RISES UP AND ELBOWS TO GAIN ACCESS ABOVE STRINGER CEILING. APPROXIMATE BOTTOM ELEVATION OF DUCT ABOVE STRINGER IS 12' 0" A.S.F.
- ⑥ CONTRACTOR SHALL ROUTE HEVY CONTROL CIRCUIT ABOVE CEILING AS INDICATED IN NEW ADDITION AND OVERLAP WITH VOO SYSTEM.
- ⑦ ADJUST AIR CONTROLLER IN DIFFUSER FOR VERTICAL THROW DOWN TO OCCUPIED ZONE IN HIGH CEILING AREA.
- ⑧ LINE OF CEILING DROP FROM 18" TO 12".

REVISIONS/ISSUANCES		
NO.	DATE	DESCRIPTION



AH&P
 CONSULTING ENGINEERS
 ANDREWS, HAMMOCK & POWELL, INC.
 250 Charter Lane
 Suite 101
 MACON, GEORGIA 31210
 MACON (478) 405-8001
 FAX (478) 405-8210
 WWW.AHPENGR.COM



Manley Spangler Smith Architects
 A Professional Corporation

508 East Taylor St.
 P.O. Box 850
 Griffin, Georgia 30224
 Office 770.227.5473
 Fax 770.225.3442

PROJECT:
 RENOVATIONS,
 MODIFICATIONS, &
 ADDITIONS TO HENRY
 COUNTY SCHOOLS -
 GROUP 16
 WOODLAND HIGH SCHOOL
 (ITEM C)

CLIENT:
 HENRY COUNTY
 BOARD OF EDUCATION

SHEET TITLE:
 MECHANICAL FLOOR
 PLAN - SECTOR "B"

LU: 08
 FTE: 1,667
 FACILITY CODE: 675-0408
 © 2016 Manley Spangler Smith Architects, PC
 PROJECT NUMBER: 201731C
 DATE: 08.07.16
 SCALE: 1/8" = 1'-0"
 DRAWN BY: WCD
 CHECKED BY: JDR

MECHANICAL FLOOR PLAN - SECTOR "B"
 SCALE: 1/8" = 1'-0"

SHEET NO.: M104