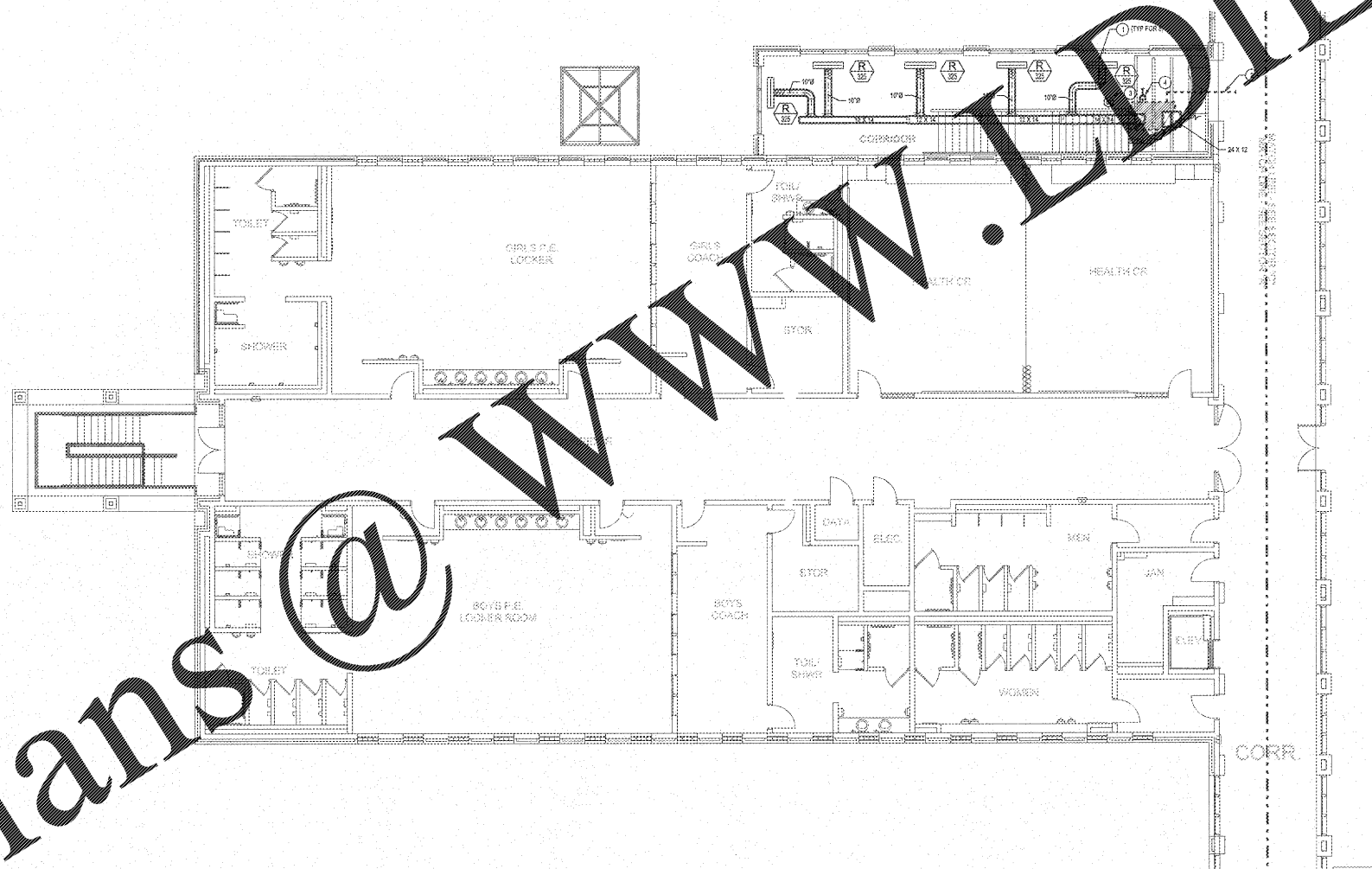


Order Plans @

WWW.DILine.com



- NOTES: (THIS SHEET ONLY)**
- 1. ADJUST THROW FOR VERTICAL DOWN TO "TRASH" GRASS AND FOR THROW TOWARDS VERTICAL UP ROOM. 1" GRILLES SHALL BE PRICE MODEL. TEST FOR WITH 4" LONG 1" SLOTS. LINEAR SLOT DIFFUSERS SHALL BE EXTRUDED ALUMINUM WITH 1/2" RING PATTERN CONTROLLER TO PROVIDE 80% CONTROL OF AIR FLOW. SEE LAY-IN LINEAR DIFFUSER IN T-BAR CELL FOR DETAIL. PROVIDE FACTORY FABRICATED DIFFUSER PLUMB WITH INTERNAL INSULATION. PROVIDE OPTIONAL CENTER NOTCH TO BRISTLE LENGTH TO ALLOW 4" UNIT TO BE INSTALLED INTO 2" T-BAR LAY-IN CEILING MODULES. DIFFUSER IS DESIGNED FOR INSTALLATION IN T-BAR LAY-IN CEILING.
 - 2. CONTRACTOR SHALL ROUTE NEW CONTROL, ONCE UP ABOVE CEILING AS INDICATED IN NEW SECTION AND CONNECT TO EXISTING DDC SYSTEM.
 - 3. COORDINATE EXACT LOCATION TO MAINTAIN 2" TO ROOF DRAIN. SEE ARCHITECTURAL DRAWINGS FOR EXACT ROOF DRAIN LOCATION.
 - 4. ROUTE 1" SLOPED, PVC CONDENSATE DRAIN PIPING FROM R14C TO ROOF DRAIN. SUPPORT AT TOP CONDENSATE SUPPORTS AS SHOWN IN CONDENSATE PIPE SUPPORT ON ROOF DETAIL.

MECHANICAL FLOOR PLAN - SECTOR "A" UPPER LEVEL
SCALE: 1/8"=1'-0"

REVISIONS/ISSUANCES		
NO.	DATE	DESCRIPTION
KEYPLAN		
AH&P CONSULTING ENGINEERS ANDREW, HAMLOCK & POWELL, INC. 250 Charter Lane Suite 102 MACON, GEORGIA 31210 MACON (478) 435-5301 FAX (478) 435-5210 WWW.AHPENR.COM		
Manley Spangler Smith Architects A Professional Corporation		
535 East Taylor St. P.O. Box 280 Griffin, Georgia 30224 Office 770.227.5473 Fax 770.228.3442		
PROJECT: RENOVATIONS, MODIFICATIONS, & ADDITIONS TO HENRY COUNTY SCHOOLS - GROUP 10 WOODLAND HIGH SCHOOL (ITEM C)		
CLIENT: HENRY COUNTY BOARD OF EDUCATION		
SHEET TITLE: MECHANICAL FLOOR PLAN - SECTOR "A" UPPER LEVEL		
I.U.: 88 P.T.E.: 1,887 FACILITY CODE: 875-0458 © 2018 Manley Spangler Smith Architects, P.C. PROJECT NUMBER: 201751C DATE: 06.07.18 SCALE: 1/8"=1'-0" DRAWN BY: WGD CHECKED BY: JDR		
SHEET NO.: M103		