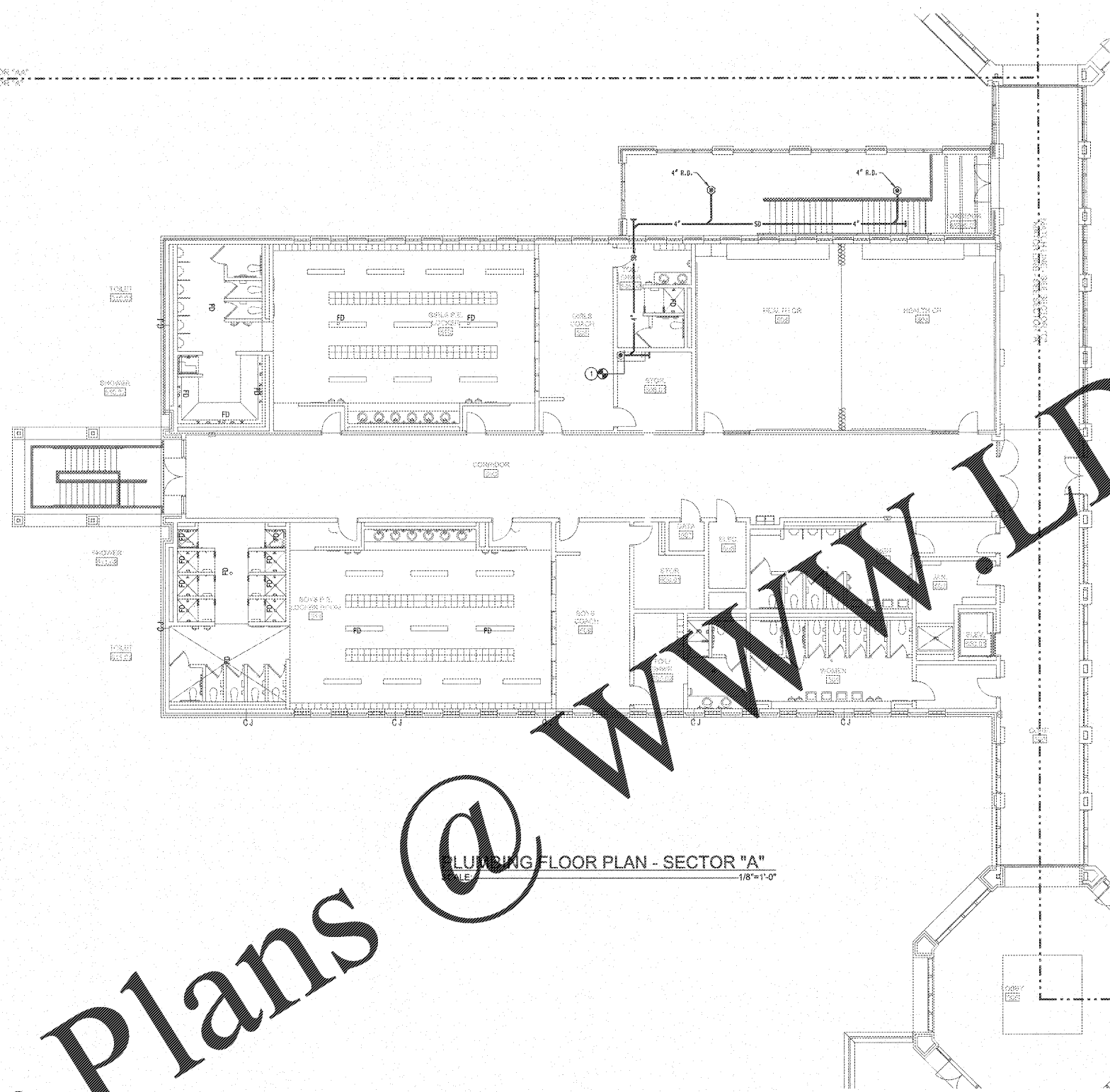


MATCHLINE - SEE SECTOR "AA"  
MATCHLINE - SEE SECTOR "AA"

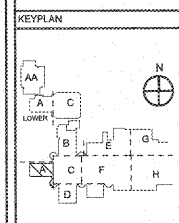
NOTES: (THIS SHEET ONLY)

- 1. CONNECT 4" STORM DRAIN PIPING TO EXISTING 6" STORM DRAIN PIPING DRIP AT THIS APPROXIMATE LOCATION IN CHASE.



PLUMBING FLOOR PLAN - SECTOR "A"  
SCALE: 1/8"=1'-0"

REVISIONS / ISSUANCES	
NO.	DESCRIPTION



**AH&P**  
CONSULTING ENGINEERS  
ANDREWS, HAMBROCK & POWELL, INC.  
251 Charter Lane  
Suite 107  
Macon, Georgia 31210  
Macon (478) 405-8301  
Fax (478) 405-8210  
WWW.AHPENGR.COM



**Manley Spangler Smith Architects**  
A Professional Corporation

525 East Taylor St.  
P.O. Box 880  
Griffin, Georgia 30224  
Office 770.227.5473  
Fax 770.225.3442

PROJECT: RENOVATIONS, MODIFICATIONS, & ADDITIONS TO HENRY COUNTY SCHOOLS - GROUP 1C WOODLAND HIGH SCHOOL (ITEM C)

CLIENT: HENRY COUNTY BOARD OF EDUCATION

SHEET TITLE: PLUMBING FLOOR PLAN - SECTOR "A"

LU: 88  
F.T.E.: 1,987  
FACILITY CODE: 675-0408  
© 2015 Manley Spangler Smith Architects, PC  
PROJECT NUMBER: 201721C  
DATE: 08.07.15  
SCALE: 1/8"=1'-0"  
DRAWN BY: JAC  
CHECKED BY: JAC

SHEET NO.: P103

Order Plans @ WWW.LDILine.com