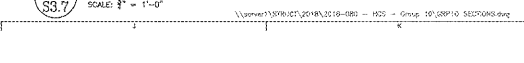
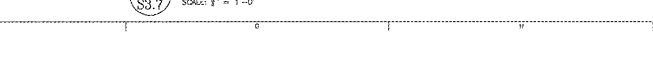
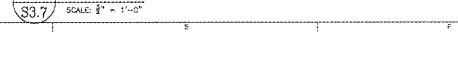
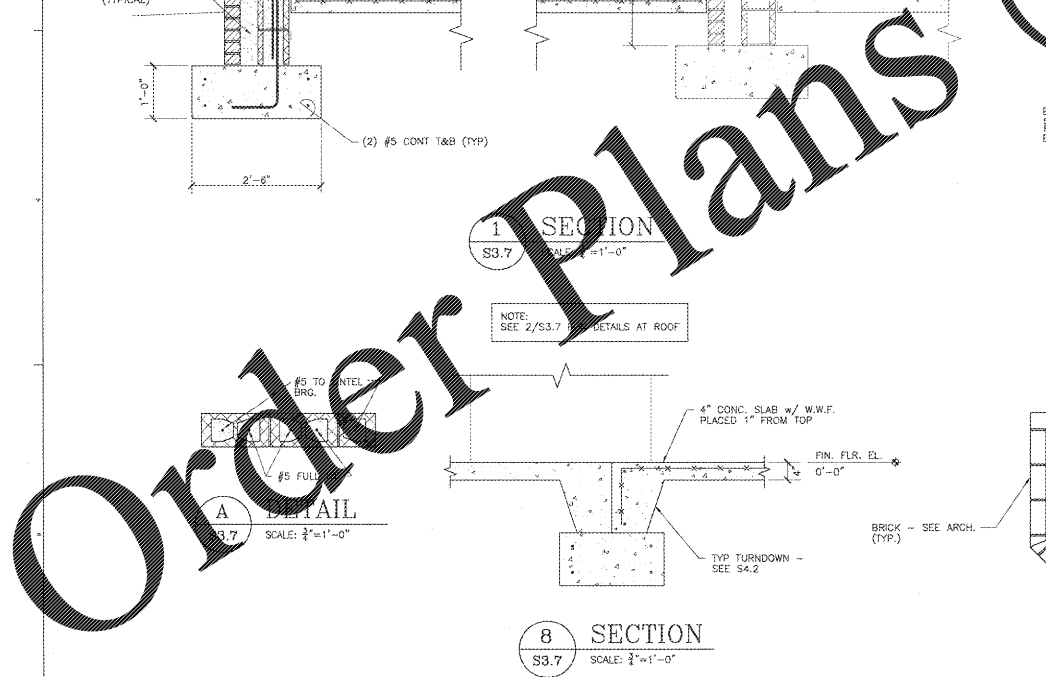
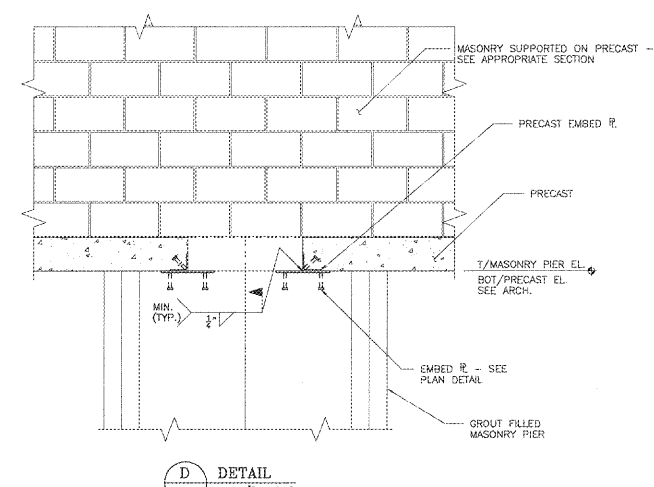
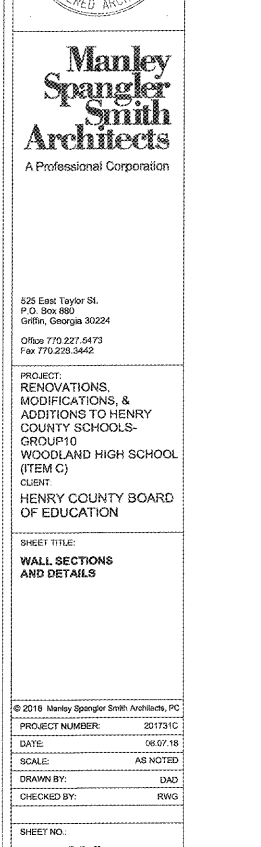
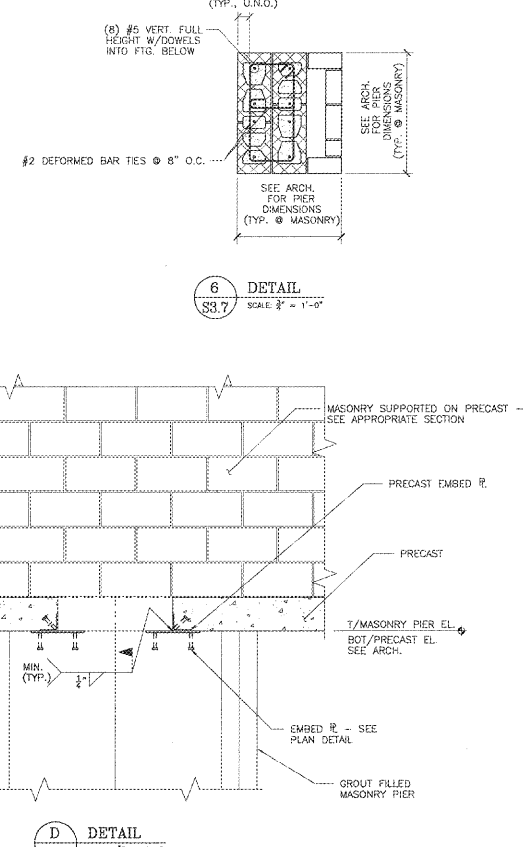
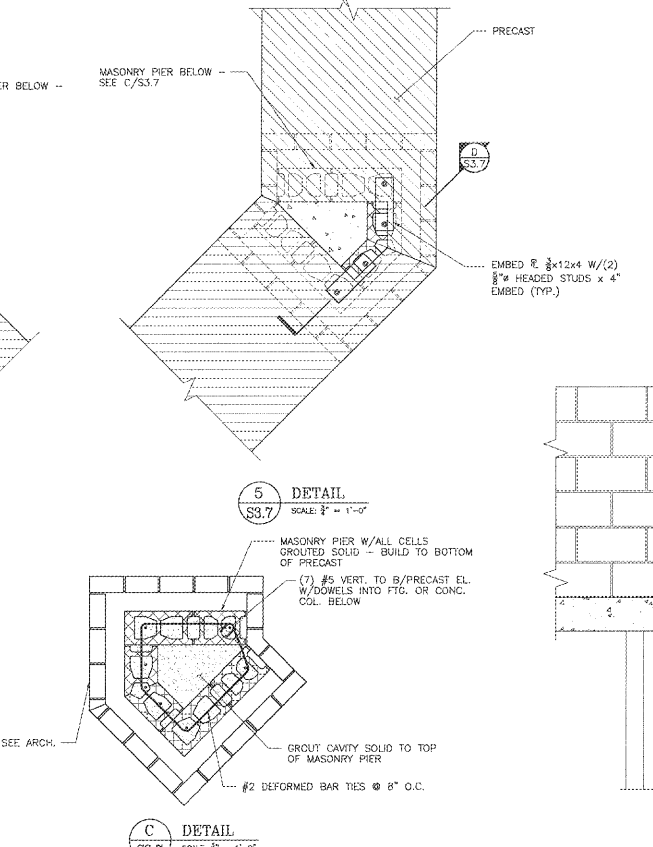
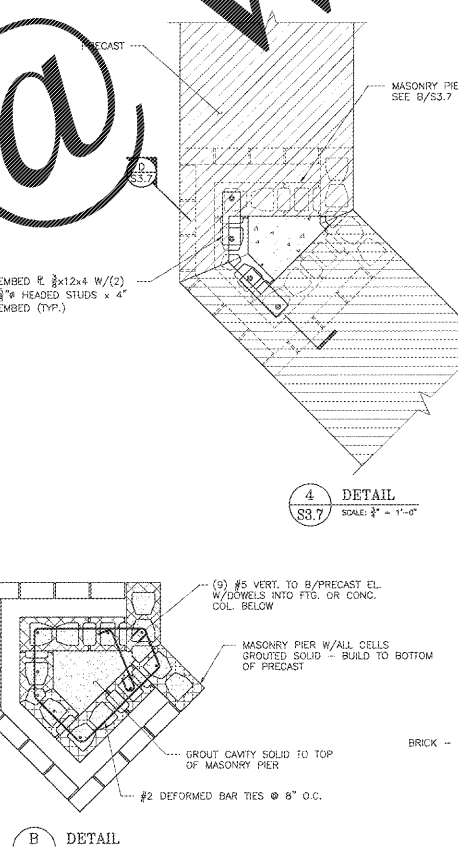
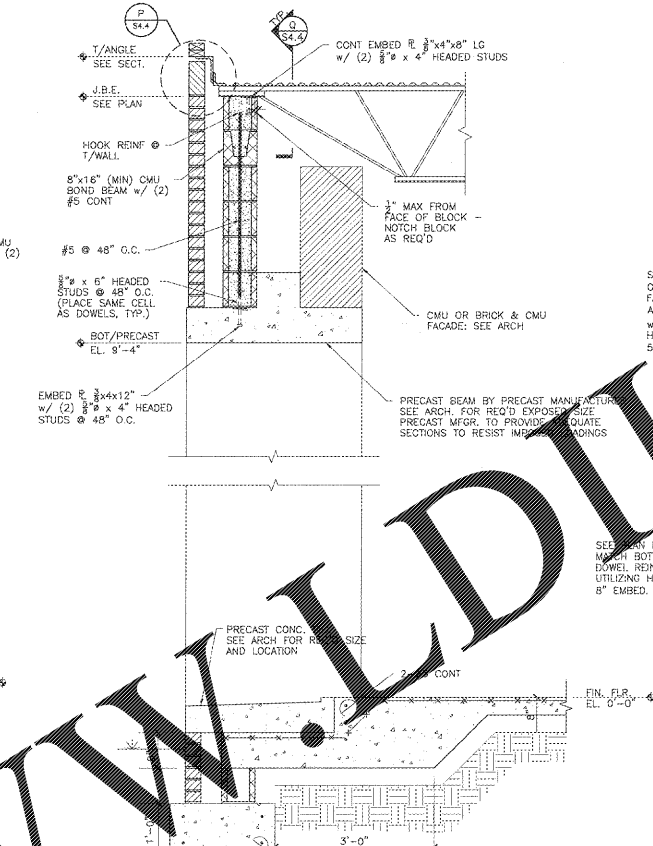
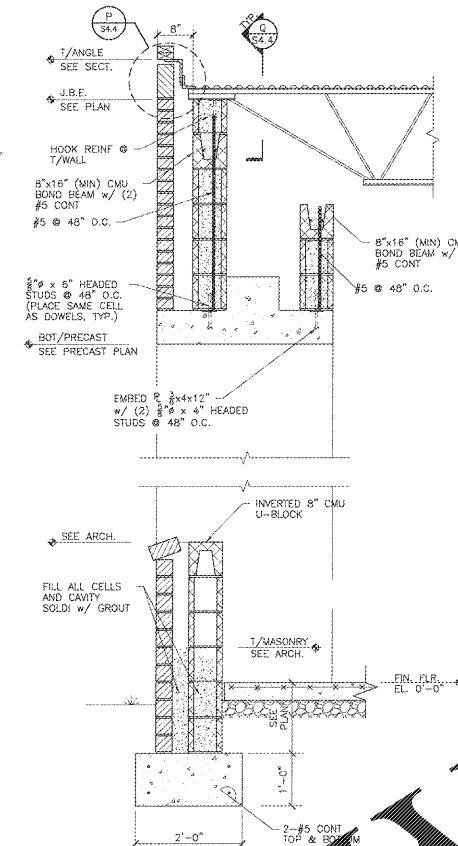
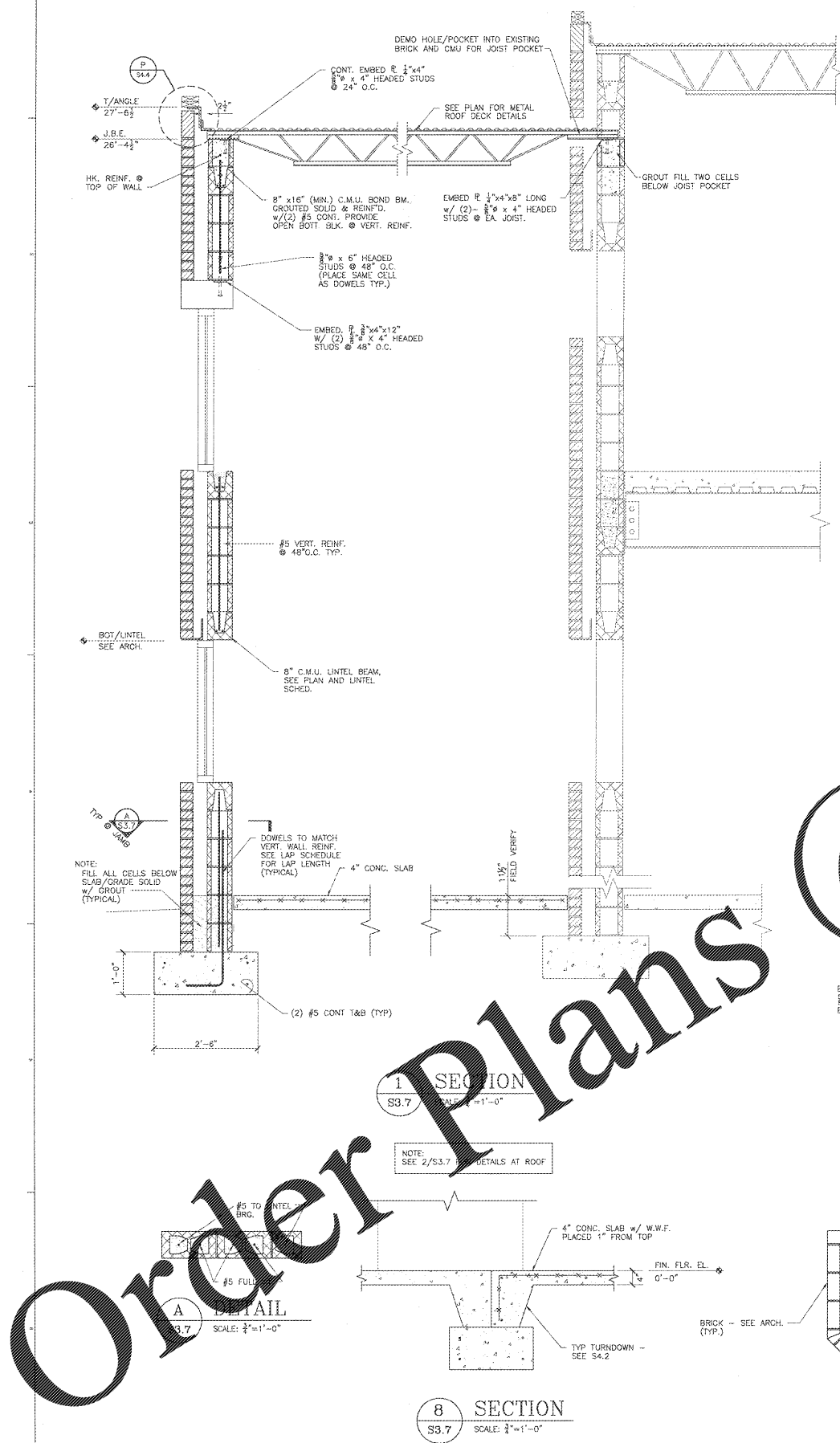


REVISIONS/ISSUANCES		
No.	DATE	DESCRIPTION
1	9-26-17	ADDENDUM #1

KEYPLAN	
<p>HAINES, GIPSON & ASSOCIATES Consulting Engineers SITE 00 500 NORTH BERRY ROAD LAWRENCEVILLE, GEORGIA 30042 770.962.7500 FAX 770.962.7500</p>	
<p>REGISTERED PROFESSIONAL ENGINEER DWYLL W. GIPSON</p>	
<p>REGISTERED ARCHITECT MANLEY SPANGLER SMITH</p>	
<p>525 East Taylor St. P.O. Box 882 Griffin, Georgia 30224 Office 770.227.5473 Fax 770.228.3442</p>	
<p>PROJECT: RENOVATIONS, MODIFICATIONS, & ADDITIONS TO HENRY COUNTY SCHOOLS - GROUP 10 WOODLAND HIGH SCHOOL (ITEM C) CLIENT: HENRY COUNTY BOARD OF EDUCATION</p>	
<p>SHEET TITLE: WALL SECTIONS AND DETAILS</p>	
<p>© 2016 Manley Spangler Smith Architects, PC PROJECT NUMBER: 201731C DATE: 06/07/18 SCALE: AS NOTED DRAWN BY: DMD CHECKED BY: RWG</p>	
<p>SHEET NO. S3.7</p>	



Order Plans

WWW.LDLINE.COM