

REVISIONS/ISSUANCES		
NO.	DATE	DESCRIPTION

KEYPLAN

**HAINES, GIPSON & ASSOCIATES**  
 Consulting Engineers  
 607E 00  
 100 NORTH BROWN ROAD  
 LAWRENCEVILLE, GEORGIA 30046  
 770.962.7800 FAX 770.962.7700



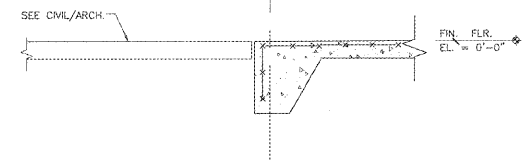
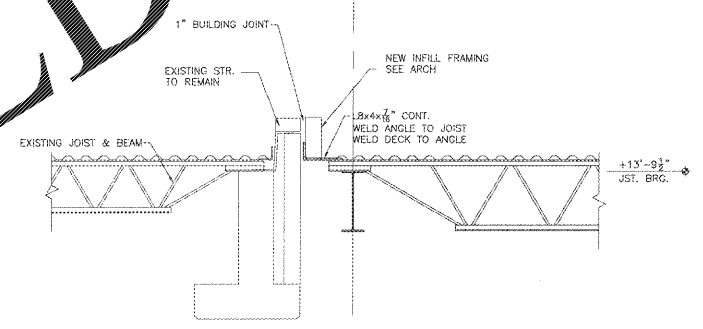
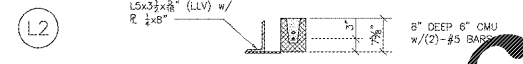
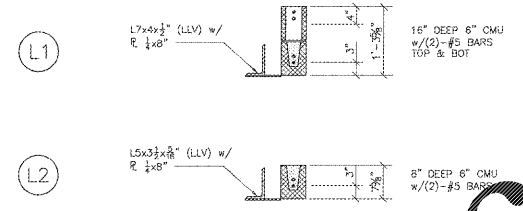
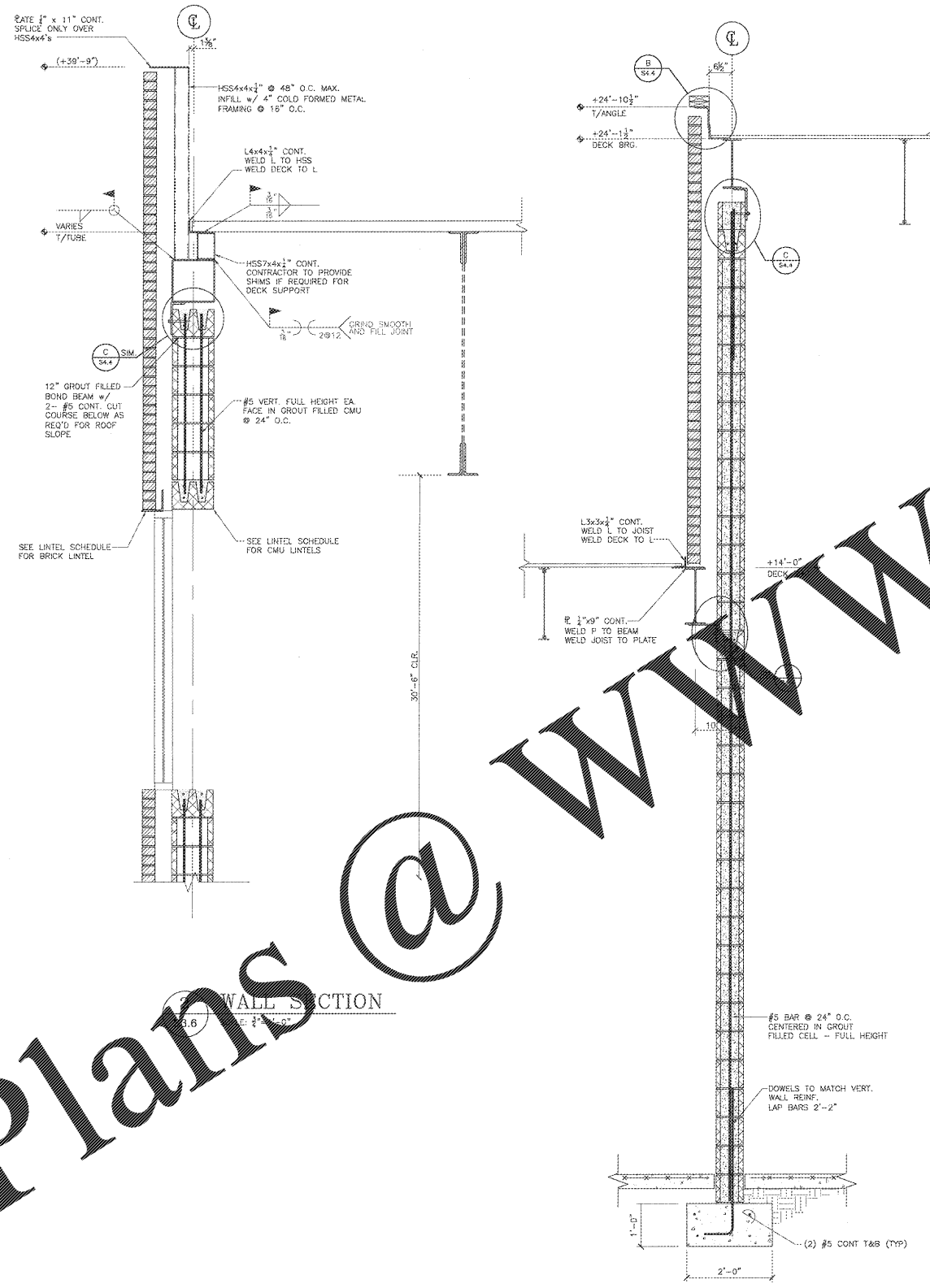
**Manley Spangler Smith Architects**  
 A Professional Corporation

525 East Taylor St.  
 P.O. Box 860  
 Griffin, Georgia 30224  
 Office 770.227.5473  
 Fax 770.228.3442

PROJECT:  
 RENOVATIONS, MODIFICATIONS, & ADDITIONS TO HENRY COUNTY SCHOOLS - GROUP 10 WOODLAND HIGH SCHOOL (ITEM C)  
 CLIENT:  
 HENRY COUNTY BOARD OF EDUCATION

SHEET TITLE:  
**WALL SECTIONS**

© 2016 Manley Spangler Smith Architects, PC  
 PROJECT NUMBER: 201731C  
 DATE: 08.07.18  
 SCALE: AS NOTED  
 DRAWN BY: DAD  
 CHECKED BY: RWG  
 SHEET NO.: **S3.6**



1 NOT USED  
 SCALE: 3/4\"/>

3 WALL SECTION  
 S3.6 SCALE: 3/4\"/>

4 WALL SECTION  
 S3.6 SCALE: 3/4\"/>

Order Plans @ www.LDILine.com

www.LDILine.com