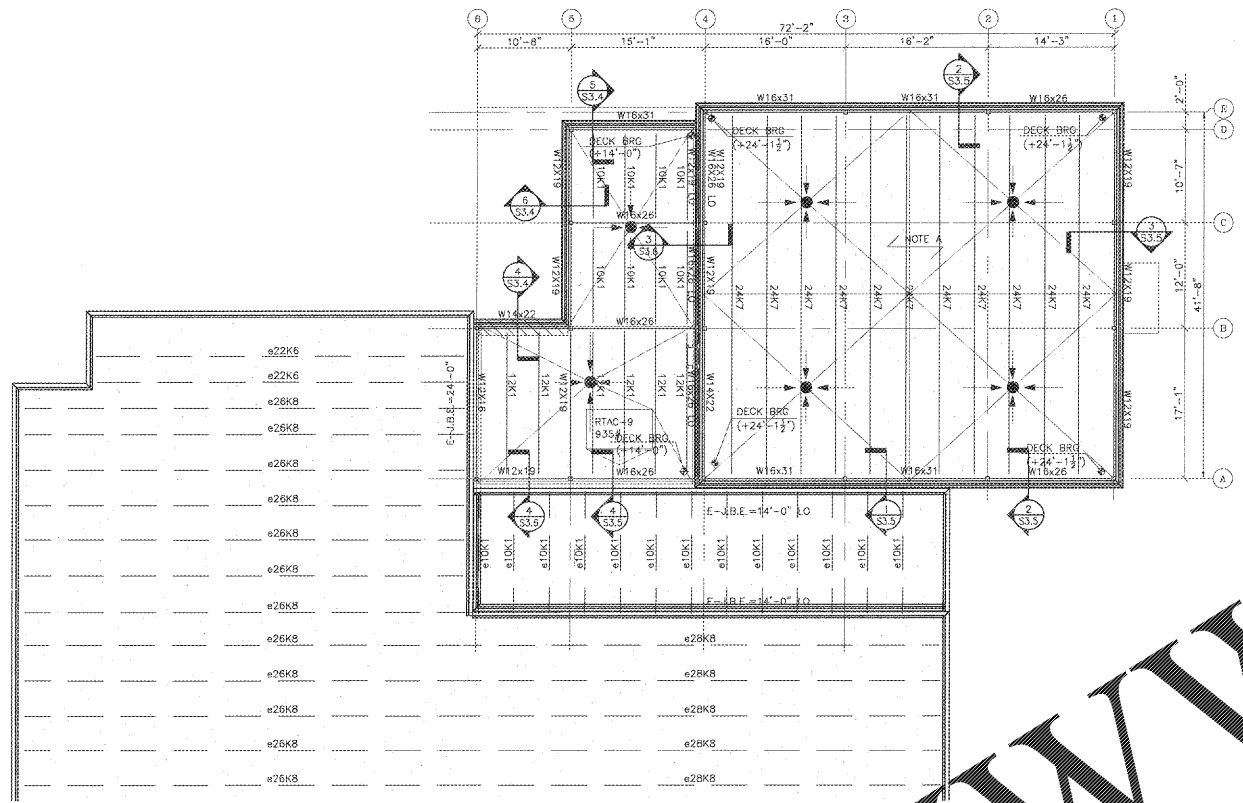


Order Plans @



SEE SHEET S2.1 FOR TYPICAL ROOF FRAMING NOTES

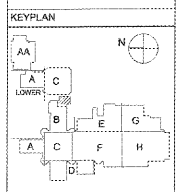
SHEET SPECIFIC NOTES:

- A. **NOTE A** - INDICATES SPAN OF VULCRAFT 1.0 GSV GALVANIZED CONFORM VENTED ROOF DECK, TYPE 22 (MIN. THICKNESS = 0.0295 INCHES, MINIMUM SH = 0.134 IN3), U.S.D. ATTACHMENT SHALL BE #12 TEK SCREWS IN 33/4 PATTERN @ ALL SUPPORTS & THREE (3) EVENLY SPACED #10 TEK SCREWS @ SIDE LAPS. PERIMETER ATTACHMENT @ 8" ON CENTER.
- B. **NOTE B** - INDICATES SPAN OF 3" 20GA. CELLULAR, ACOUSTICAL METAL ROOF DECK W/ 20GA. PERFORATED BOTTOM PLATE (VULCRAFT TYPE 3NPA OR EQUAL). ATTACHMENT SHALL BE X-EDN19-70X12 OR EQUAL POWDER ACTUATED FASTENERS IN A 24/6 PATTERN. FASTEN ALL SIDE LAPS W/ (10) EVENLY SPACED #10 TEK SCREWS BETWEEN SUPPORTS. CONTRACTOR SHALL COORDINATE LOCATIONS AND SIZES OF ALL ROOF OPENINGS.
- C. INSTALL HSS12x12 TUBE IN LONGEST PRACTICAL LENGTHS. SPLICE OVER COLS. IN FULLY BEVEL EDGES OF TUBE ONE SIDE OF SPLICE AND WELD ALL AROUND. GRIND ALL WELDS SMOOTH.
- D. TOP OF STEEL BEAMS PARALLEL TO AND IN THE SAME PLANE AS JOISTS. JOISTS SHALL HAVE TOP OF STEEL TO MATCH ADJACENT WEST OR TRUSS WHERE SEAMING BEAMS ADJACENT AND PARALLEL TO DLH SERIES JOISTS. ALLOWANCE SHALL BE FOR ADJACENT AND PARALLEL TO DLH SERIES JOISTS.
- E. UNLESS NOTED OTHERWISE, ROOF FRAMING MEMBERS SHALL BE SPACED AT 4'-0" O.C. MAX.
- F. JOIST DESIGNATIONS FOR MECHANICAL UNITS HAVE BEEN DESIGNED TO ACCOMMODATE THE WEIGHTS OF THE UNITS INDICATED.
- G. CONTRACTOR SHALL OCCUPY THE LOCATION, SIZE AND WEIGHT ALL MECHANICAL UNIT WEIGHTS. BAR JOISTS SHALL BE DESIGNED FOR THE ADDITIONAL WEIGHT OF THE UNITS. (JOIST SHALL BE PERMANENTLY DESIGNATED TO DESIGNATE JOIST).
- H. JOIST MANUFACTURER SHALL COORDINATE ALL JOIST BRIDGING WITH LOCATIONS OF MECHANICAL UNITS. WHEN BRIDGES RUN OVER JOISTS, JOIST MANUFACTURER SHALL PROVIDE HORIZONTAL BRIDGING IN LIEU OF JOIST BRIDGING AS REQUIRED TO AVOID INTERFERENCE WITH MECHANICAL UNITS.
- I. JOIST MANUFACTURER DESIGN JOIST FOR ADDITIONAL LOAD AT EACH END DUE TO WIND. SEE SECTION FOR KICKER LOCATIONS AND LOADS.

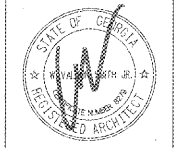
ROOF LOADS (FLAT ROOFS)  
 LIVE LOAD----- 20PSF  
 DEAD LOAD----- 25PSF  
 WIND UPLIFT----- 14PSF (NET)  
 WIND DOWN----- 18PSF

1 ROOF FRAMING PLAN - SECTOR "B"  
 S2.3 SCALE: 3/8" = 1'-0"

REVISIONS/ISSUANCES	
No.	DATE DESCRIPTION



**HAINES, GIPSON & ASSOCIATES**  
 Consulting Engineers  
 NOTE: DO NOT SCALE  
 1000 NORTH BOWEN ROAD  
 LAWRENCEVILLE, GEORGIA 30047  
 770-962-7300 FAX 770-962-7795



**Manley Spangler Smith Architects**  
 A Professional Corporation

525 East Taylor St.  
 P.O. Box 680  
 Griffin, Georgia 30224  
 Office 770.227.5473  
 Fax 770.228.3442

PROJECT:  
 RENOVATIONS, MODIFICATIONS, & ADDITIONS TO HENRY COUNTY SCHOOLS - GROUP 10 WOODLAND HIGH SCHOOL (ITEM C)  
 CLIENT:  
 HENRY COUNTY BOARD OF EDUCATION

SHEET TITLE:  
 ROOF FRAMING PLAN - SECTOR B

© 2018 Manley Spangler Smith Architects, PC  
 PROJECT NUMBER: 201731C  
 DATE: 06.07.18  
 SCALE: AS NOTED  
 DRAWN BY: GAG  
 CHECKED BY: RWG

SHEET NO.: S2.3