

Manley Spangler Smith Architects
A Professional Corporation

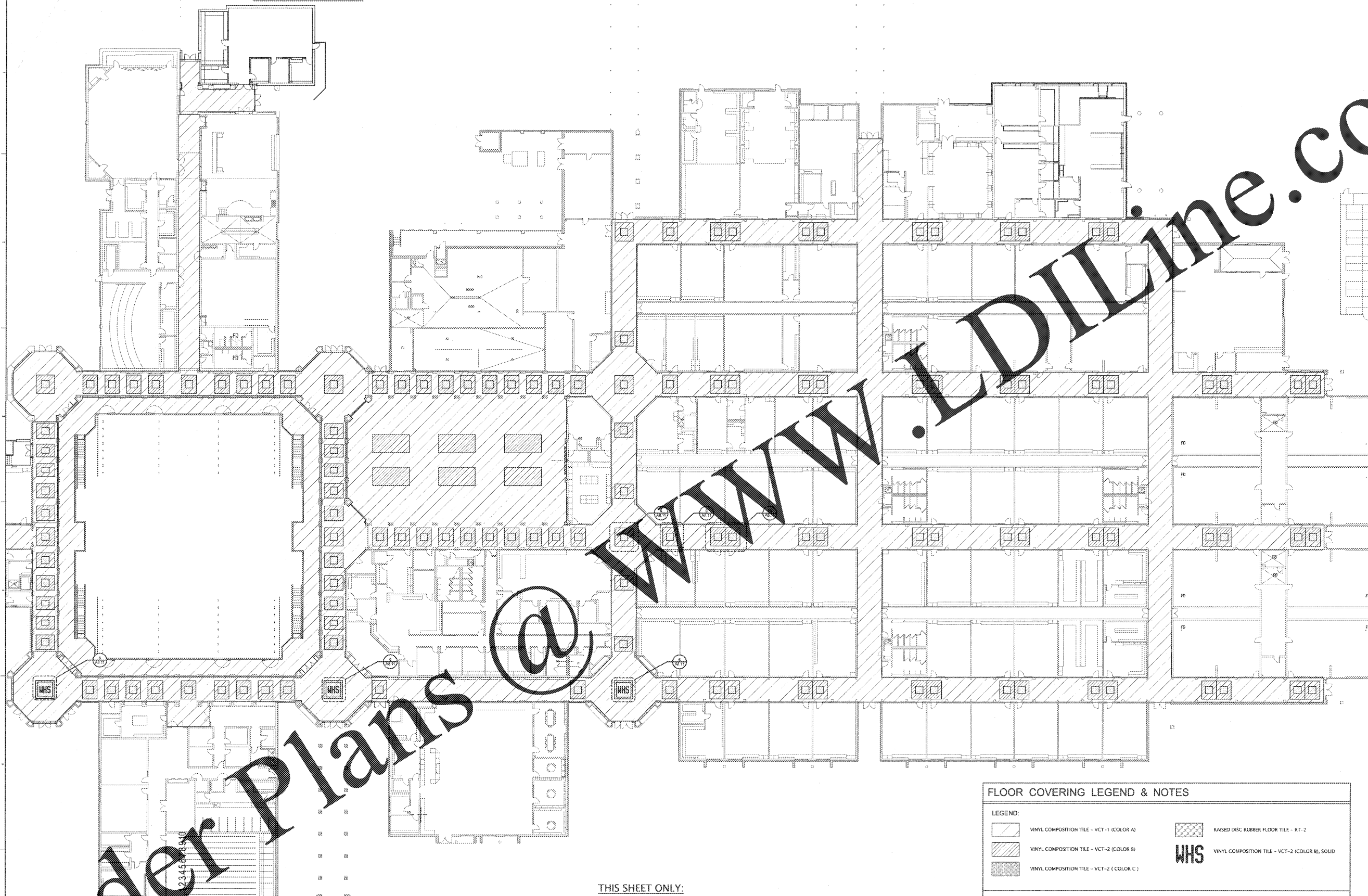
625 East Taylor St
P.O. Box 880
Griffin, Georgia 30224
Office 770.227.5473
Fax 770.228.3442

PROJECT:
RENOVATIONS,
MODIFICATIONS, &
ADDITIONS TO HENRY
COUNTY SCHOOLS -
GROUP 10
WOODLAND HIGH SCHOOL
(ITEM C)
CLIENT:
HENRY COUNTY BOARD
OF EDUCATION

SHEET TITLE:
PARTIAL FLOOR PATTERN
PLAN

1/1 : 27
1/2 : 1.687
FACILITY CODE: 675-0409
© 2018 Manley Spangler Smith Architects, PC
PROJECT NUMBER: 201731C
DATE: 08.07.18
SCALE: AS NOTED
DRAWN BY: JS
CHECKED BY: RV

SHEET NO.
A8.21



FLOOR COVERING LEGEND & NOTES

LEGEND:

	VINYL COMPOSITION TILE - VCT-1 (COLOR A)		RAISED DISC RUBBER FLOOR TILE - RT-2
	VINYL COMPOSITION TILE - VCT-2 (COLOR B)		VINYL COMPOSITION TILE - VCT-2 (COLOR B), SOLID
	VINYL COMPOSITION TILE - VCT-2 (COLOR C)		

GENERAL NOTES:

1. THIS DRAWING INDICATES FLOOR TILE PATTERNS, ACCENT STRIPS AND COLORS IN CORRIDORS, LOBBIES, COMMONS, ETC.
2. THIS DRAWING DOES NOT INDICATE THE SCOPE OF TILE WORK. SCOPE OF TILE WORK AND FLOOR FINISHES IS INDICATED ON FLOOR PLANS AND FINISH SCHEDULE.
3. ALL OTHER SPACES INDICATED ON FINISH SCHEDULE TO RECEIVE VINYL COMPOSITION TILE SHALL BE VCT-1 (COLOR A).
4. PROVIDE RUBBER STAIR TREADS & RISERS AT ALL STAIRS U.O.N.O.

THIS SHEET ONLY:

REMOVE ALL EXISTING VINYL COMPOSITION TILE, COLOR B AND REPLACE WITH NEW VINYL COMPOSITION TILE, COLOR B.

EXISTING VINYL COMPOSITION TILE, COLORS A & C ARE TO REMAIN.

ALL VINYL COMPOSITION TILE IN THE NEW ADDITION AREAS IS NEW FOR COLORS A, B & C.

Order Plans @

234567890

1
A8.21

PARTIAL FLOOR PATTERN PLAN