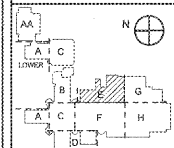


REVISIONS/ISSUANCES

KEYPLAN



Manley Spangler Smith Architects
A Professional Corporation

525 East Taylor St.
P.O. Box 880
Orlin, Georgia 30224
Office 770.227.5473
Fax 770.228.3442

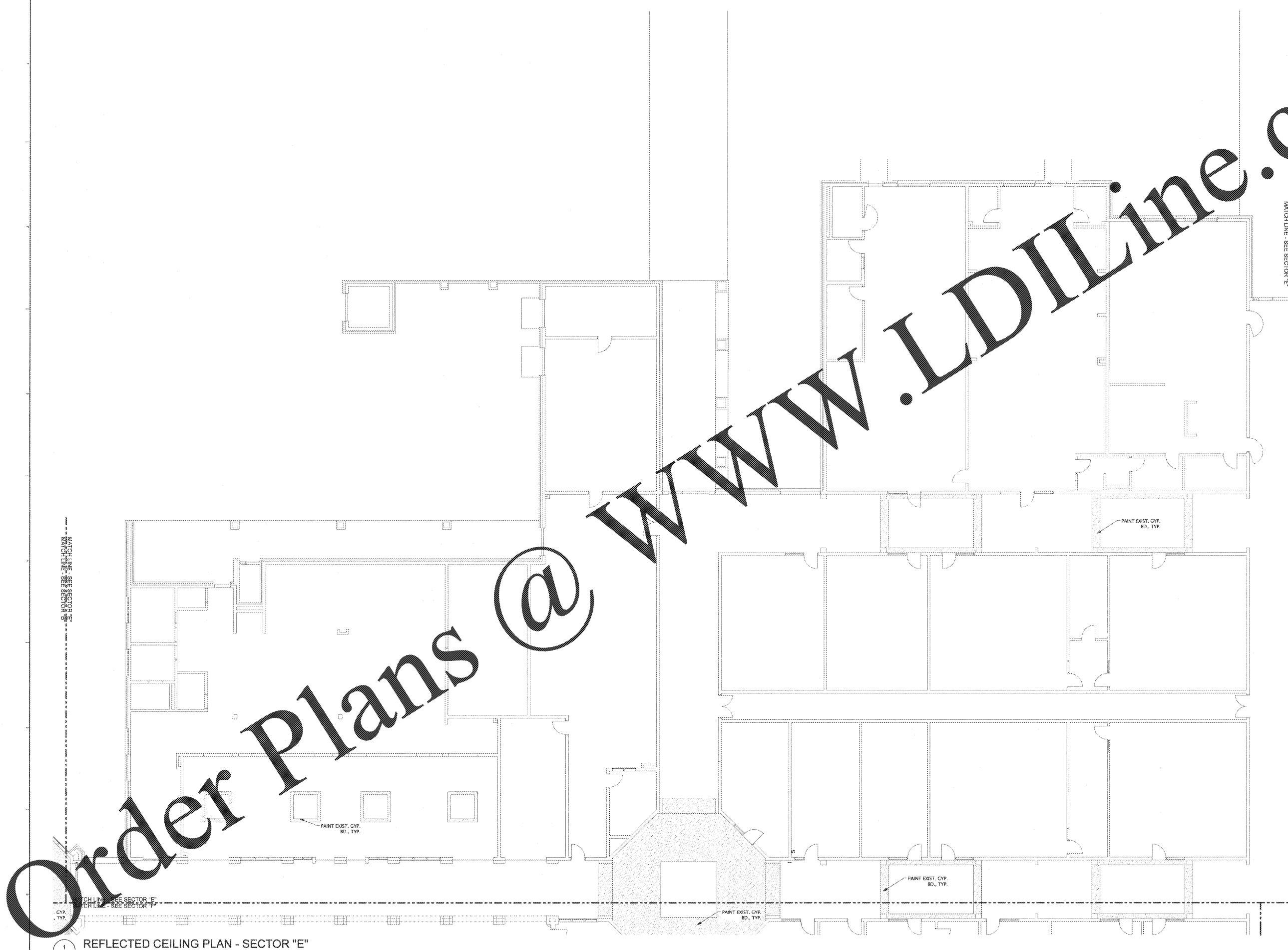
PROJECT:
RENOVATIONS, MODIFICATIONS, & ADDITIONS TO HENRY COUNTY SCHOOLS - GROUP 10 WOODLAND HIGH SCHOOL (ITEM C)
CLIENT:
HENRY COUNTY BOARD OF EDUCATION

SHEET TITLE:
REFLECTED CEILING PLAN - SECTOR "E"

LU: 67
F.T.E.: 1.887
FACILITY CODE: 675-0409

© 2018 Manley Spangler Smith Architects, PC
PROJECT NUMBER: 201731C
DATE: 06.07.18
SCALE: AS NOTED
DRAWN BY: JS
CHECKED BY: RV

SHEET NO.: **A7.21E**



REFLECTED CEILING PLAN - SECTOR "E"
SCALE: 1/8" = 1'-0"

Order Plans @

WWW.LDILine.com