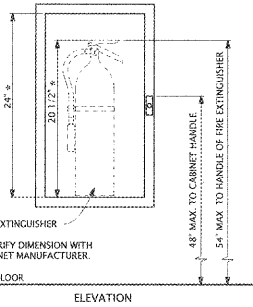
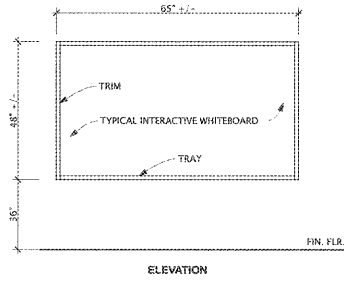


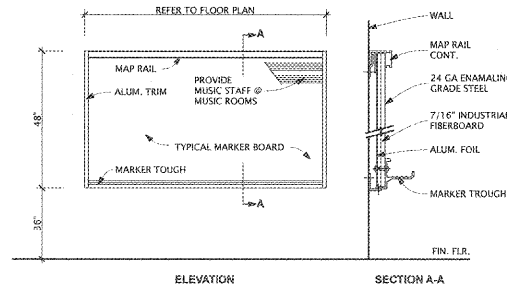
NOTE:
 1. PROVIDE TYP. 'K' EXTINGUISHERS IN ALL KITCHEN AREAS.
 2. IN FIRE RATED WALLS PROVIDE FIRE RATED CABINETS TO MATCH RATING OF WALL.



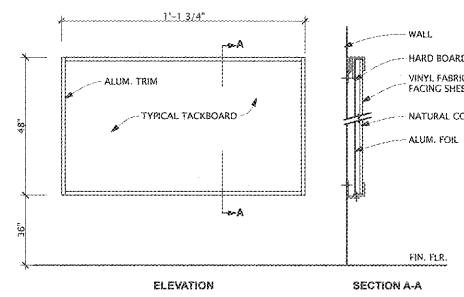
1
 A6.41
 SCALE: 3/8" = 1'-0"



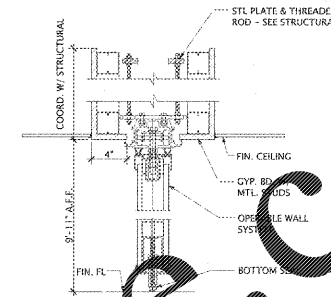
2
 A6.41
 NOT TO SCALE
 TYP. INTERACTIVE WHITE BOARD (IWB-PRO)



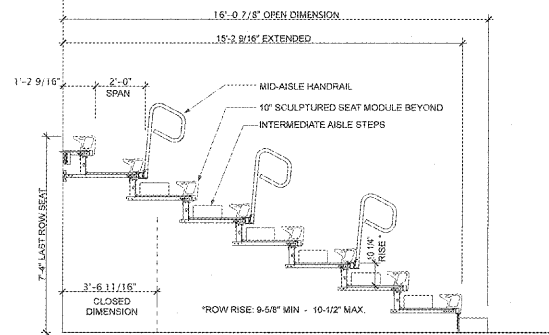
3
 A6.41
 NOT TO SCALE
 TYP. MARKERBOARD (MB) DETAIL



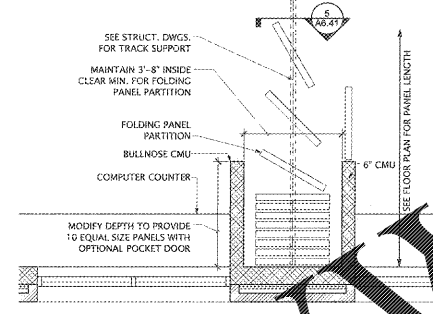
4
 A6.41
 NOT TO SCALE
 TYP. TACKBOARD (TB) DETAIL



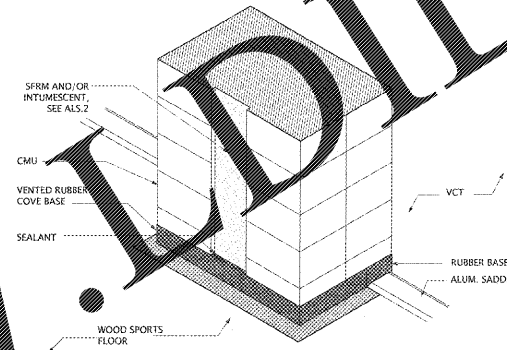
5
 A6.41
 NOT TO SCALE
 FOLDING PANEL PARTITION SECTION



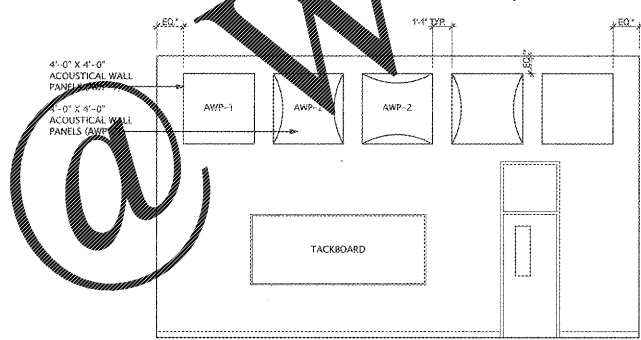
6
 A6.41
 SCALE: 3/8" = 1'-0"
 SECTION AT BLEACHERS



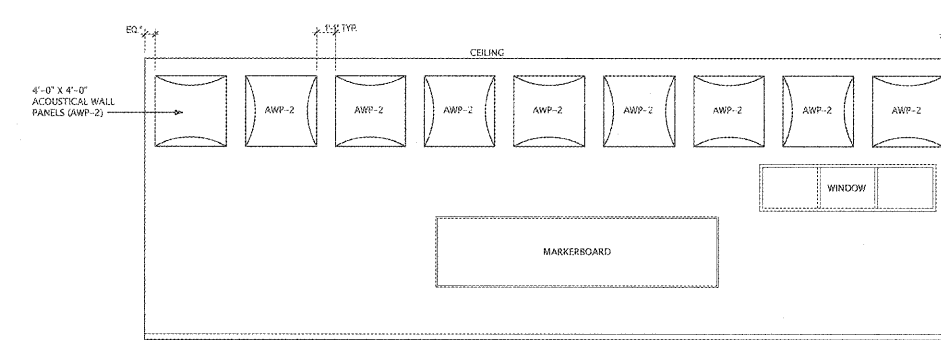
7
 A6.41
 SCALE: 3/8" = 1'-0"
 C.R. FOLDING PARTITION



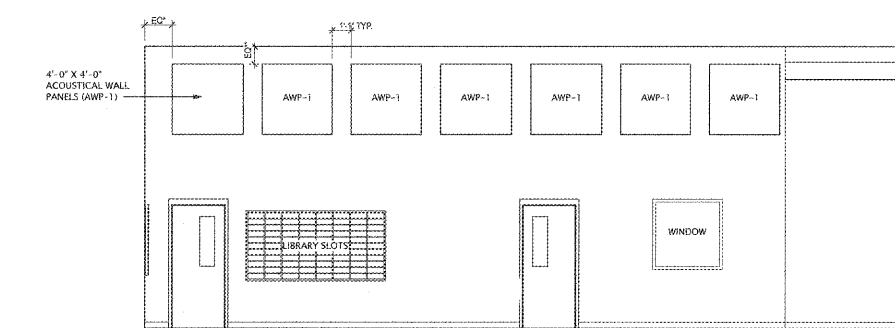
8
 A6.41
 SCALE: 1/4" = 1'-0"
 WOOD/VCT TRANSITION



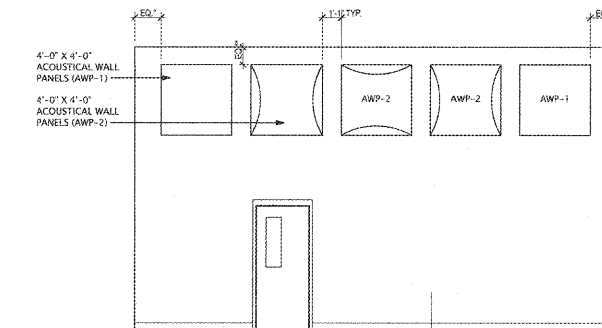
9
 A6.41
 SCALE: 1/4" = 1'-0"
 STRINGS INTERIOR ELEVATION



10
 A6.41
 SCALE: 1/4" = 1'-0"
 STRINGS INTERIOR ELEVATION

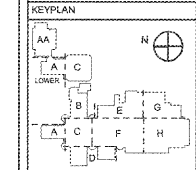


11
 A6.41
 SCALE: 1/4" = 1'-0"
 STRINGS INTERIOR ELEVATION



12
 A6.41
 SCALE: 1/4" = 1'-0"
 STRINGS INTERIOR ELEVATION

| NO. | REVISIONS/ISSUANCES |
|-----|---------------------|
| | |
| | |
| | |
| | |



Manley Spangler Smith Architects
 A Professional Corporation

525 East Taylor St.
 P.O. Box 950
 Griffin, Georgia 30224
 Office 770.227.5473
 Fax 770.228.3442

PROJECT:
 RENOVATIONS, MODIFICATIONS, & ADDITIONS TO HENRY COUNTY SCHOOLS - GROUP 10 WOODLAND HIGH SCHOOL (ITEM C)
 CLIENT:
 HENRY COUNTY BOARD OF EDUCATION
 SHEET TITLE:
 INTERIOR ELEVATIONS & MISC. DETAILS

LL: 87
 RTE: 1,887
 FACILITY CODE: 675-0408
 © 2018 Manley Spangler Smith Architects, PC
 PROJECT NUMBER: 2017310
 DATE: 06.07.18
 SCALE: AS NOTED
 DRAWN BY: JS
 CHECKED BY: RV

SHEET NO.:
A6.41

Order Plans

WWW.IDLine.com