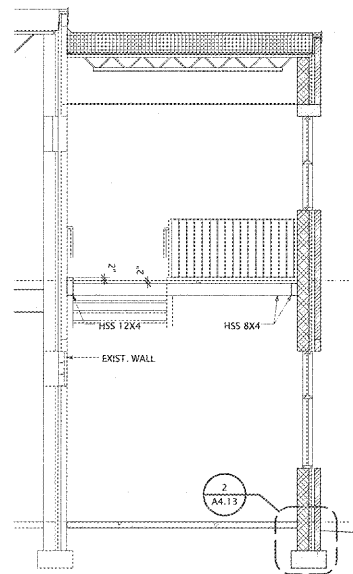
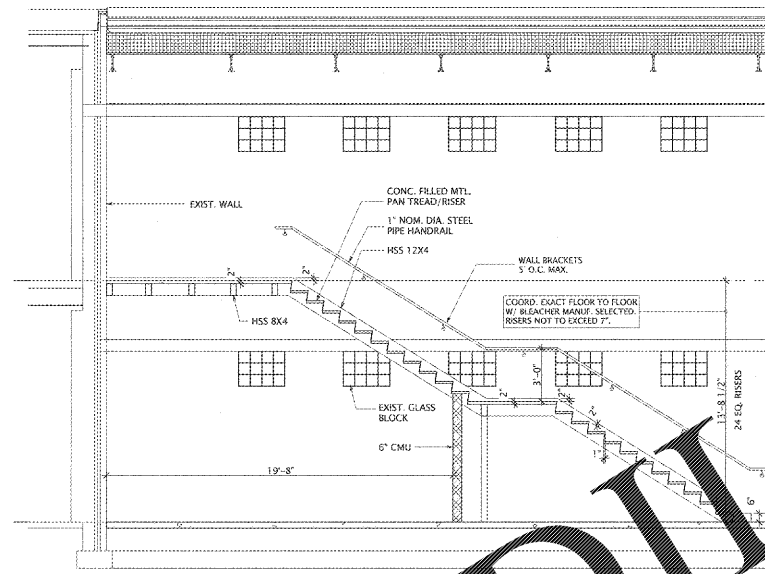


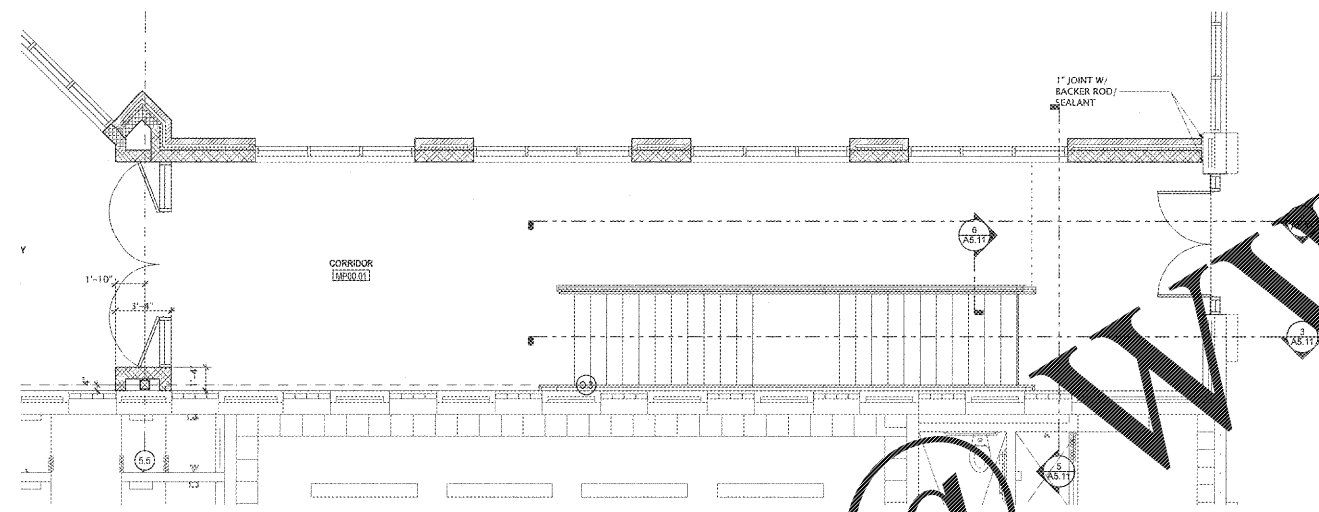
4 SECTION  
SCALE: 1/4" = 1'-0"



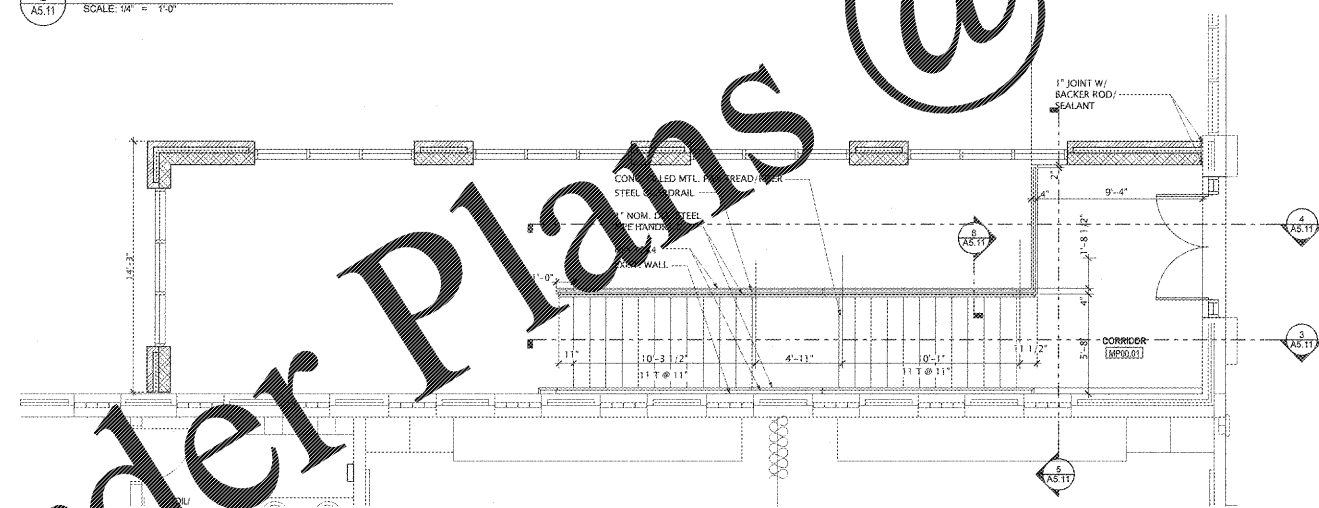
5 SECTION  
SCALE: 1/4" = 1'-0"



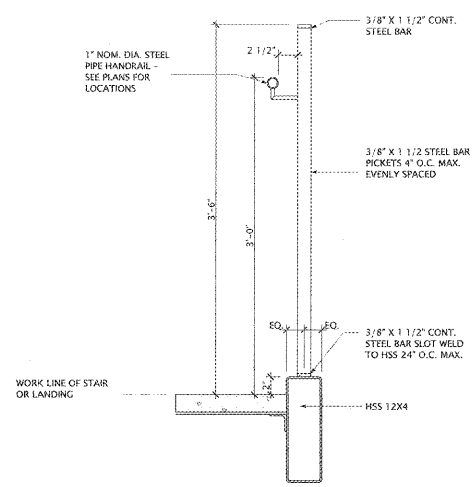
3 SECTION  
SCALE: 1/4" = 1'-0"



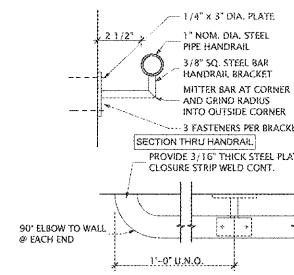
2 STAIR PLAN - LOWER LEVEL  
SCALE: 3/8" = 1'-0"



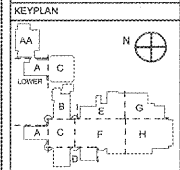
1 STAIR PLAN - UPPER LEVEL  
SCALE: 3/8" = 1'-0"



6 GUARDRAIL DETAIL  
SCALE: 1/16" = 1'-0"



7 HANDRAIL DETAIL  
SCALE: 3/8" = 1'-0"



**Manley Spangler Smith Architects**  
A Professional Corporation

525 East Taylor St.  
P.O. Box 960  
Cuthbert, Georgia 30224  
Office 770.227.5473  
Fax 770.228.3442

PROJECT:  
RENOVATIONS,  
MODIFICATIONS, &  
ADDITIONS TO HENRY  
COUNTY SCHOOLS -  
GROUP 10  
WOODLAND HIGH SCHOOL  
(ITEM C)  
CLIENT:  
HENRY COUNTY BOARD  
OF EDUCATION

SHEET TITLE:  
STAIR DETAILS

1/1: 87  
F.T.E.: 1,687  
FACILITY CODE: 675-0408  
© 2018 Manley Spangler Smith Architects, PC  
PROJECT NUMBER: 201731C  
DATE: 06.07.18  
SCALE: AS NOTED  
DRAWN BY: JS  
CHECKED BY: RV

SHEET NO:  
A5.11

Order Plans @

WWW.LDILine.com