

Manley Spangler Smith Architects
A Professional Corporation

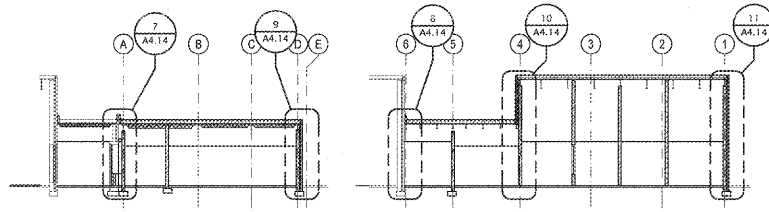
225 East Taylor St.
P.O. Box 990
Gulfport, Georgia 30224
Office 770.227.5473
Fax 770.228.3442

PROJECT:
RENOVATIONS,
MODIFICATIONS, &
ADDITIONS TO HENRY
COUNTY SCHOOLS -
GROUP 10
WOODLAND HIGH SCHOOL
(ITEM C)
CLIENT:
HENRY COUNTY BOARD
OF EDUCATION

SHEET TITLE:
SECTIONS

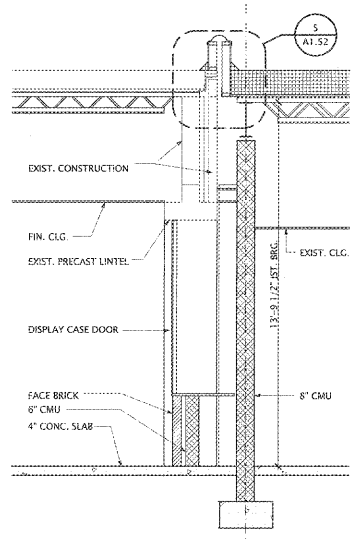
LU: 87
FTE: 1.687
FACILITY CODE: 675-0408
© 2018 Manley Spangler Smith Architects, PC
PROJECT NUMBER: 201731C
DATE: 06.07.18
SCALE: AS NOTED
DRAWN BY: JS
CHECKED BY: RV

SHEET NO.:
A4.14

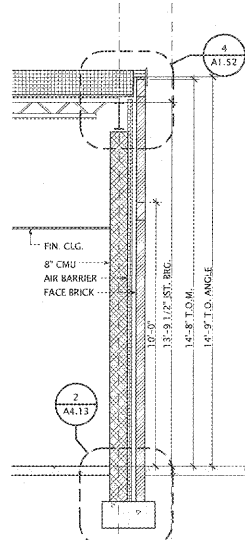


1 65 SECTION
SCALE: 1/16" = 1'-0"

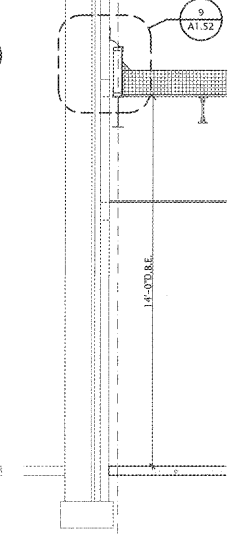
2 66 SECTION
SCALE: 1/16" = 1'-0"



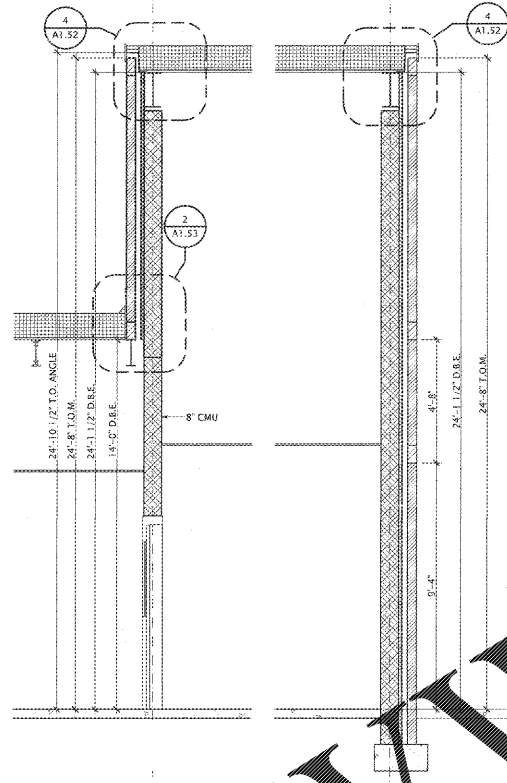
7 65 SECTION
SCALE: 3/8" = 1'-0"



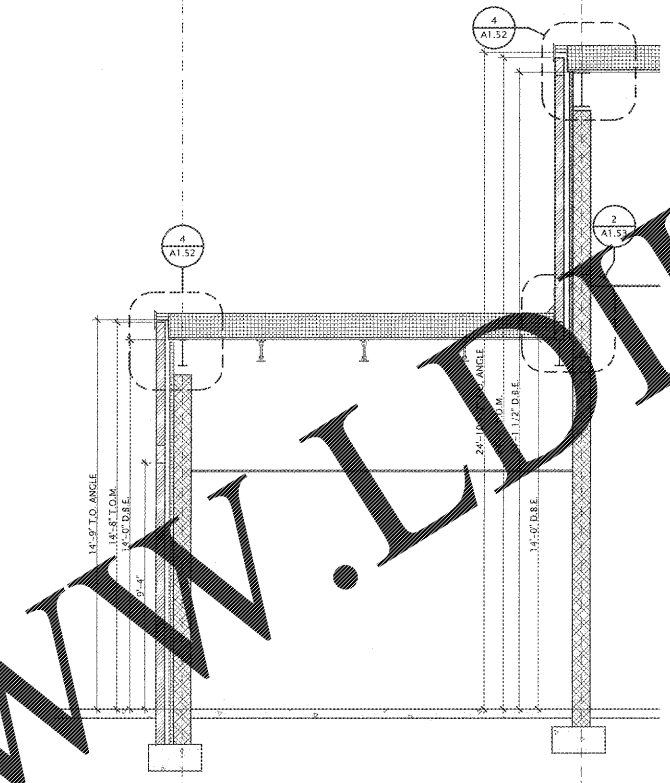
9 65 SECTION
SCALE: 3/8" = 1'-0"



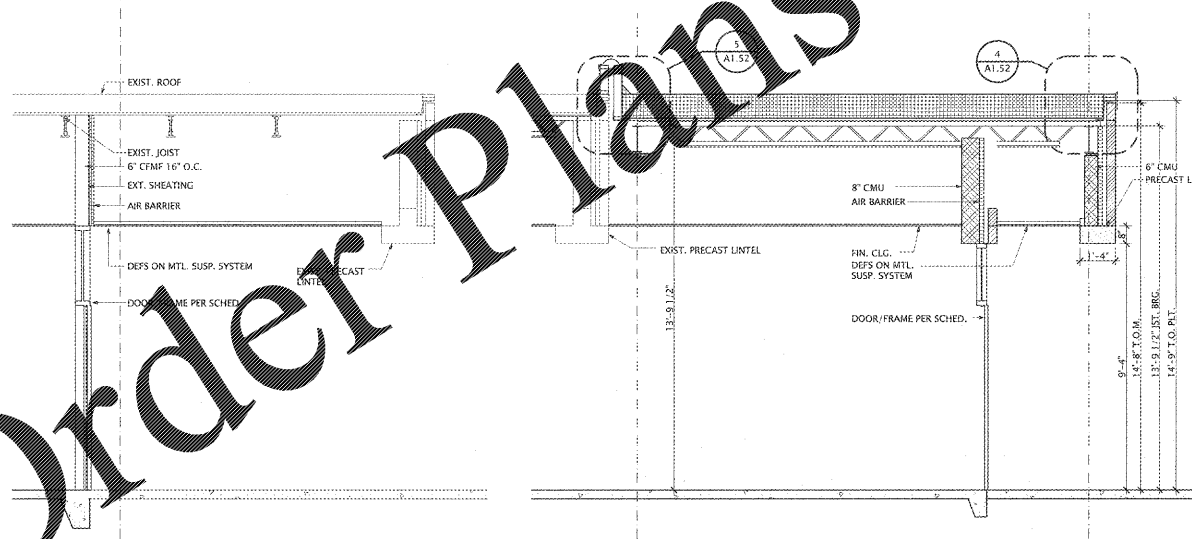
8 66 SECTION
SCALE: 3/8" = 1'-0"



10 66 SECTION
SCALE: 3/8" = 1'-0"

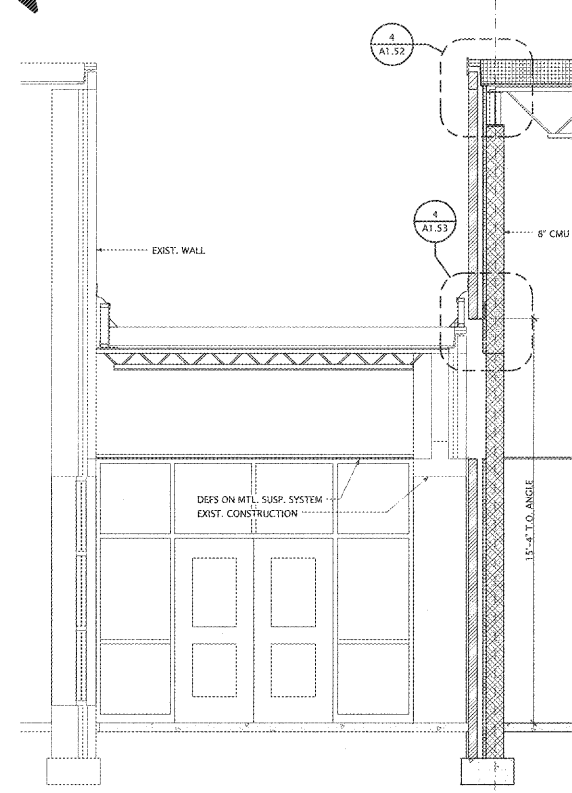


12 73 SECTION
SCALE: 3/8" = 1'-0"

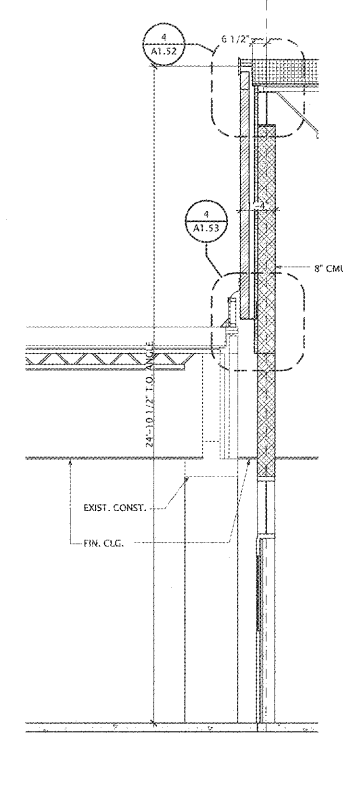


5 70 SECTION
SCALE: 3/8" = 1'-0"

6 67 SECTION
SCALE: 3/8" = 1'-0"



3 68 SECTION
SCALE: 3/8" = 1'-0"



4 69 SECTION
SCALE: 3/8" = 1'-0"

Order Plans @

WWW.LDLine.com