

**Manley Spangler Smith Architects**  
A Professional Corporation

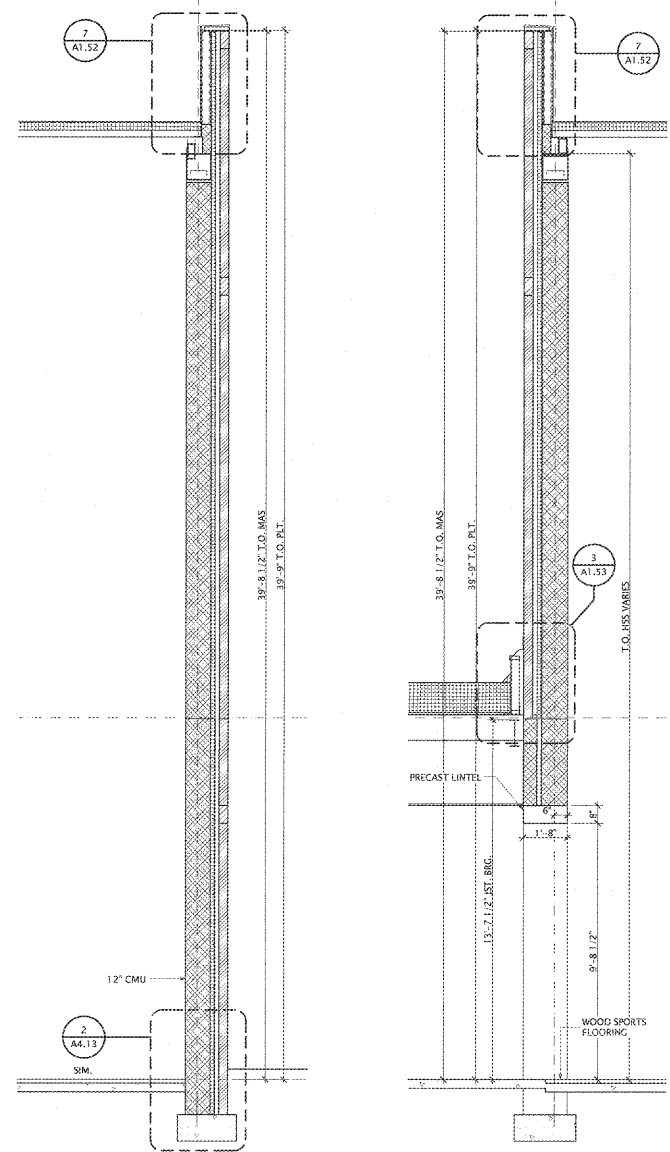
825 East Taylor St.  
P.O. Box 900  
Gwin, Georgia 30224  
Office 770.227.5473  
Fax 770.226.3442

PROJECT:  
RENOVATIONS,  
MODIFICATIONS, &  
ADDITIONS TO HENRY  
COUNTY SCHOOLS -  
GROUP 10  
WOODLAND HIGH SCHOOL  
(ITEM C)  
CLIENT:  
HENRY COUNTY BOARD  
OF EDUCATION

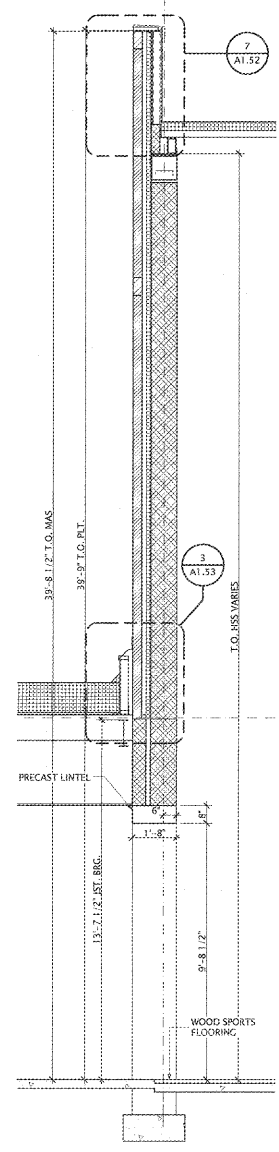
SHEET TITLE:  
SECTIONS

LL: 87  
PTE: 1.887  
FACILITY CODE: 675-0408  
© 2018 Manley Spangler Smith Architects, PC  
PROJECT NUMBER: 2017310  
DATE: 06.07.18  
SCALE: AS NOTED  
DRAWN BY: JS  
CHECKED BY: RV

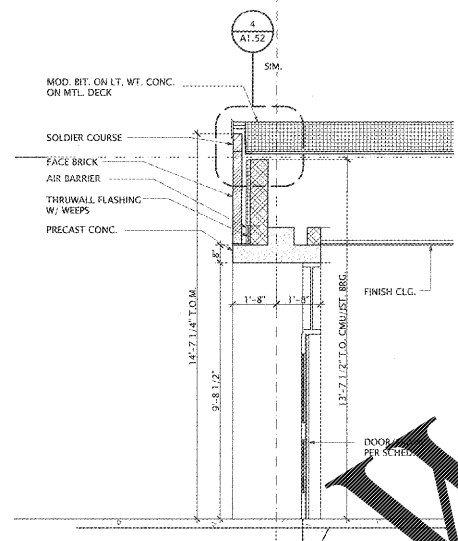
SHEET NO.:  
**A4.12**



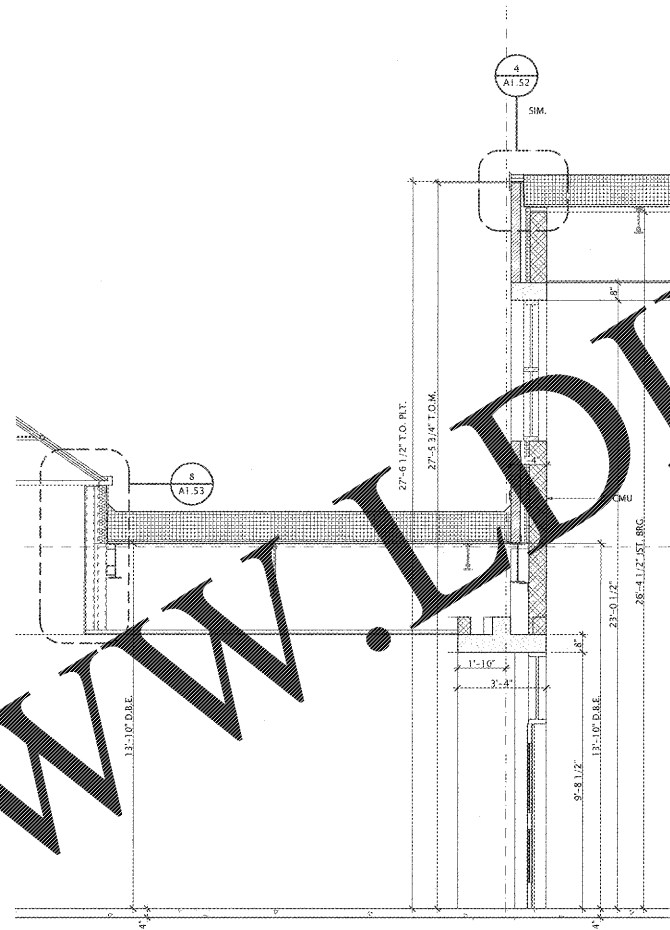
1 04 SECTION  
SCALE 3/8" = 1'-0"



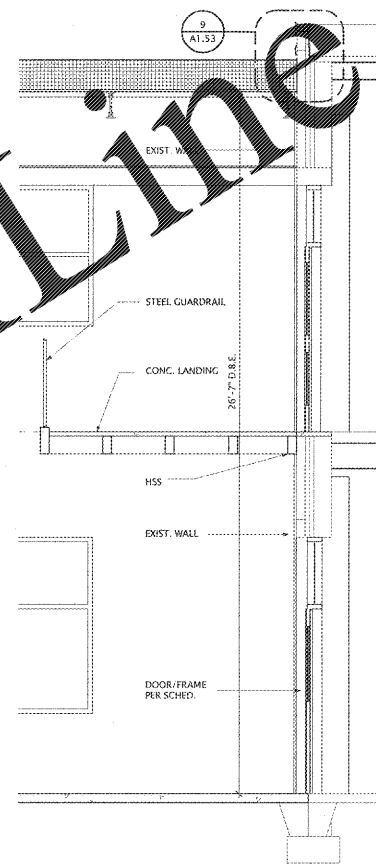
2 04 SECTION  
SCALE 3/8" = 1'-0"



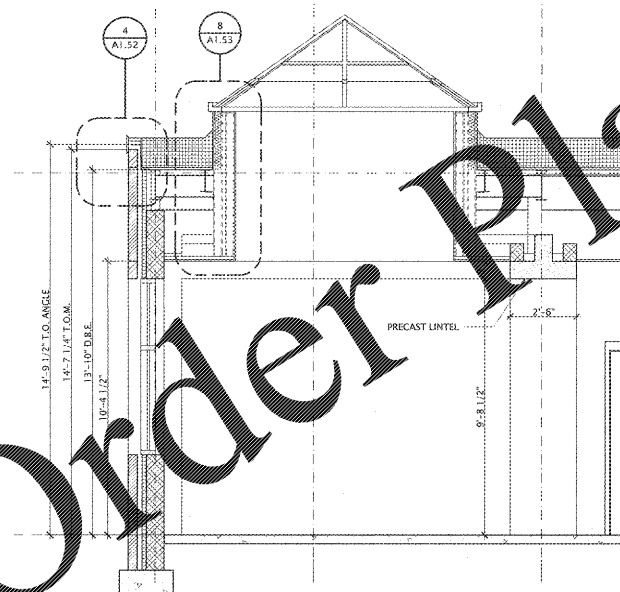
3 10 SECTION  
SCALE 3/8" = 1'-0"



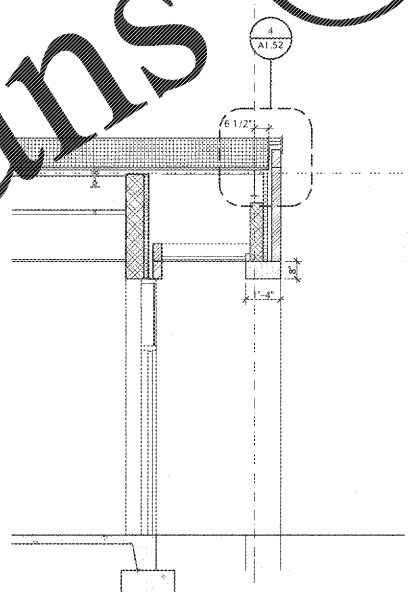
4 10 SECTION  
SCALE 3/8" = 1'-0"



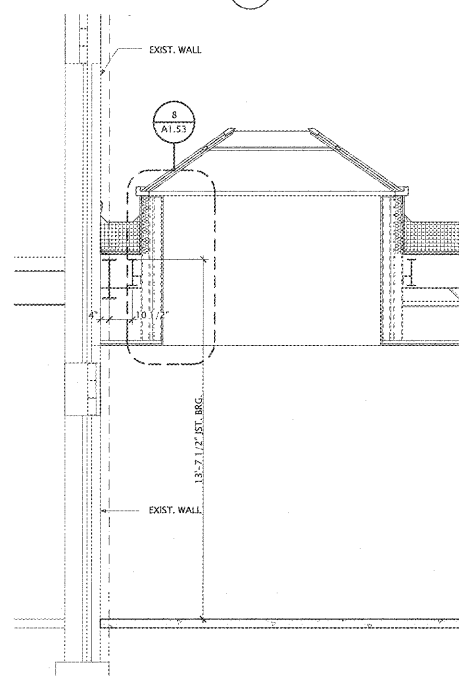
5 10 SECTION  
SCALE 3/8" = 1'-0"



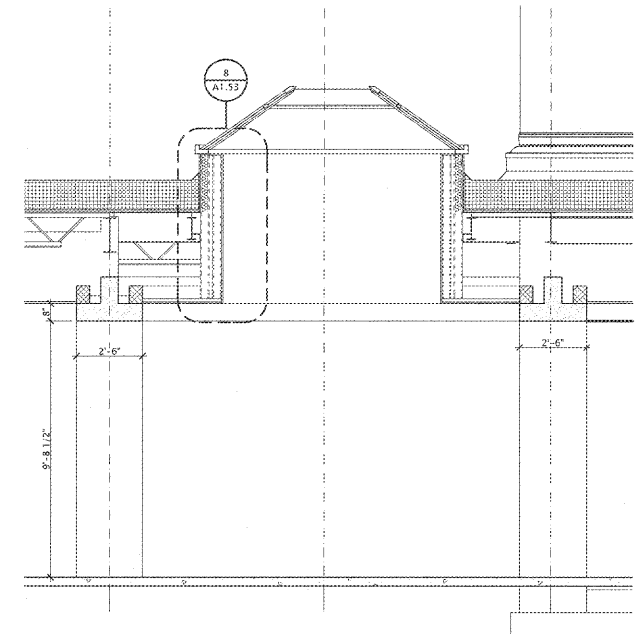
4 05 SECTION  
SCALE 3/8" = 1'-0"



5 05 SECTION  
SCALE 3/8" = 1'-0"



6 02 SECTION  
SCALE 3/8" = 1'-0"



7 02 SECTION  
SCALE 3/8" = 1'-0"

NOTE:  
FIREPROOFING NOT SHOWN HERE FOR CLARITY  
SEE SHEET ALS. 2 FOR FIRE PROOFING SCHEDULE AND  
FIRE PROOFING NOTES.

Order Plans @

WWW.LDILINE.COM