

**Manley Spangler Smith Architects**  
A Professional Corporation

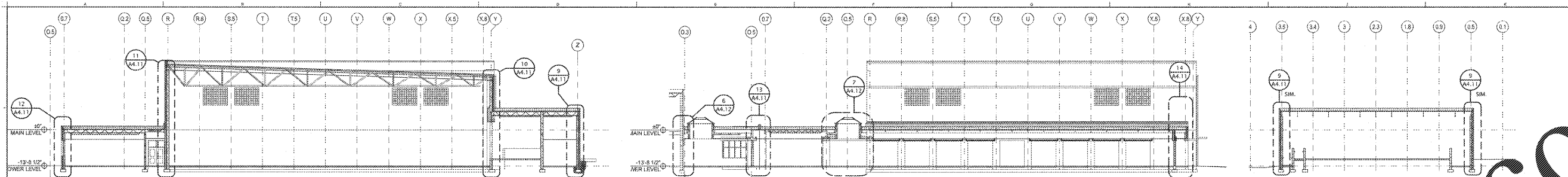
525 East Taylor St.  
P.O. Box 900  
Griffin, Georgia 30224  
Office 770.227.5473  
Fax 770.228.3442

PROJECT:  
RENOVATIONS,  
MODIFICATIONS, &  
ADDITIONS TO HENRY  
COUNTY SCHOOLS -  
GROUP 10  
WOODLAND HIGH SCHOOL  
(ITEM C)  
CLIENT:  
HENRY COUNTY BOARD OF  
EDUCATION

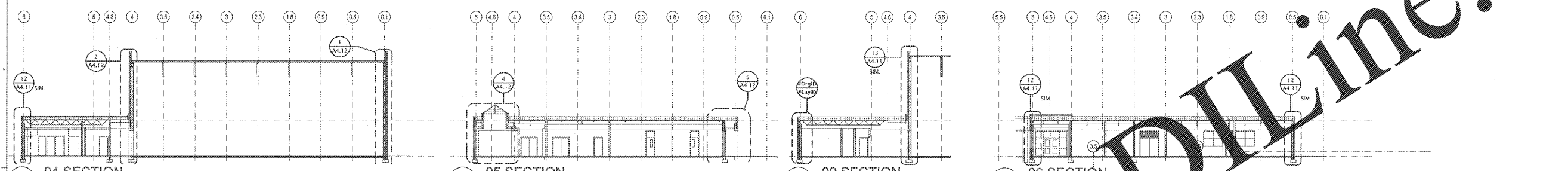
SHEET TITLE:  
SECTIONS

LU: 37  
FTE: 1.687  
FACILITY CODE: 675-0408  
© 2019 Manley Spangler Smith Architects, PC  
PROJECT NUMBER: 201731C  
DATE: 06/07/18  
SCALE: AS NOTED  
DRAWN BY: JS  
CHECKED BY: RV

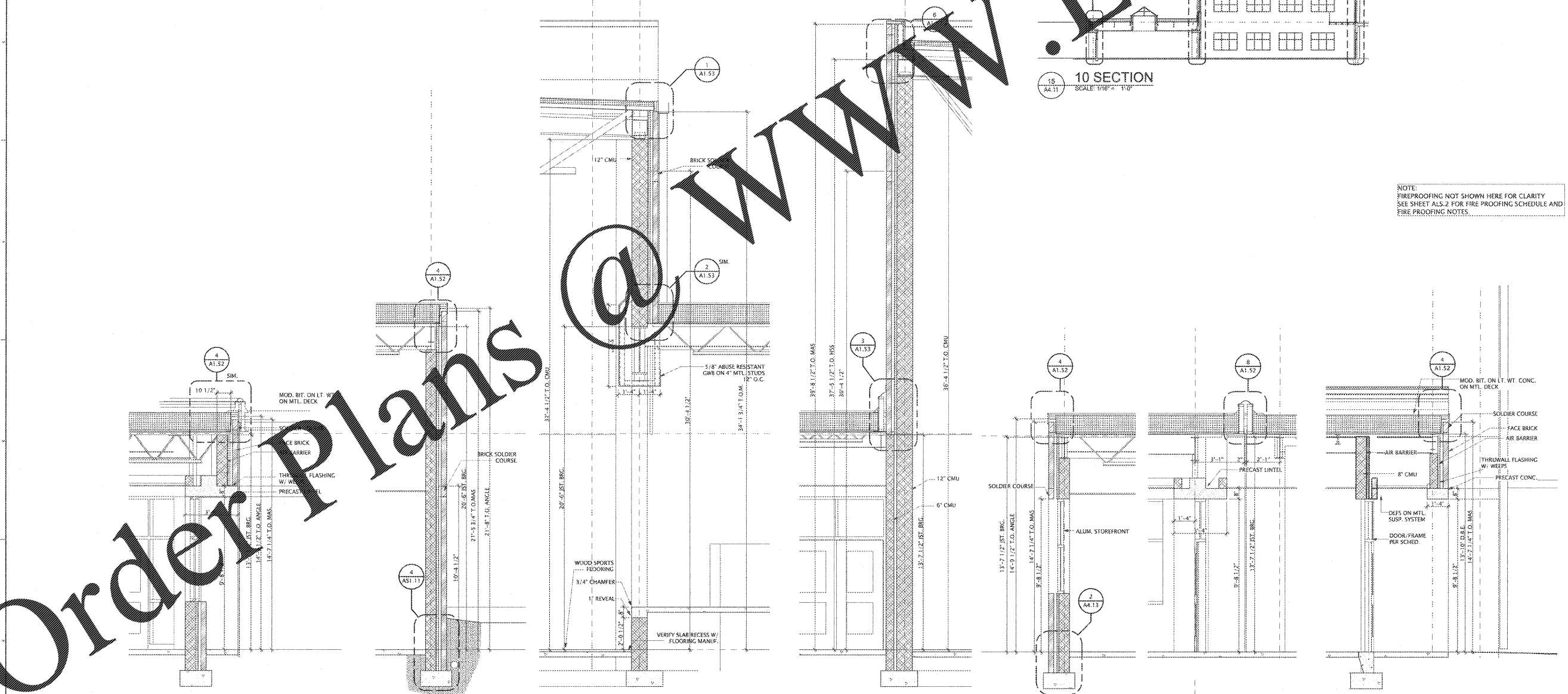
SHEET NO.:  
**A4.11**



01 SECTION SCALE: 1/16" = 1'-0"  
02 SECTION SCALE: 1/16" = 1'-0"  
03 SECTION SCALE: 1/16" = 1'-0"



04 SECTION SCALE: 1/16" = 1'-0"  
05 SECTION SCALE: 1/16" = 1'-0"  
06 SECTION SCALE: 1/16" = 1'-0"  
09 SECTION SCALE: 1/16" = 1'-0"  
10 SECTION SCALE: 1/16" = 1'-0"



08 SECTION SCALE: 3/8" = 1'-0"  
01 SECTION SCALE: 3/8" = 1'-0"  
01 SECTION SCALE: 3/8" = 1'-0"  
01 SECTION SCALE: 3/8" = 1'-0"  
01 SECTION SCALE: 3/8" = 1'-0"  
01 SECTION SCALE: 3/8" = 1'-0"  
02 SECTION SCALE: 3/8" = 1'-0"  
02 SECTION SCALE: 3/8" = 1'-0"

NOTE:  
FIREPROOFING NOT SHOWN HERE FOR CLARITY  
SEE SHEET ALS.2 FOR FIRE PROOFING SCHEDULE AND  
FIRE PROOFING NOTES.

Order Plans @

WWW.LDLine.com