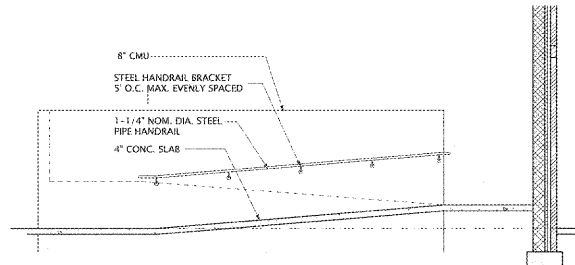
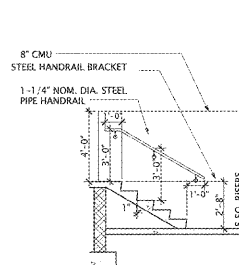


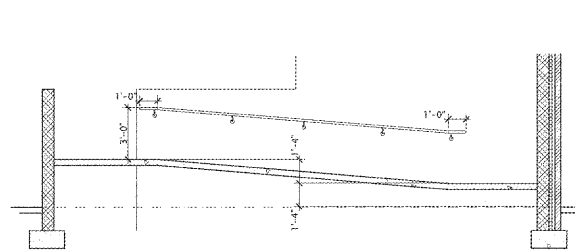
1 STAIR/RAMP PLAN
SCALE: 1/4" = 1'-0"



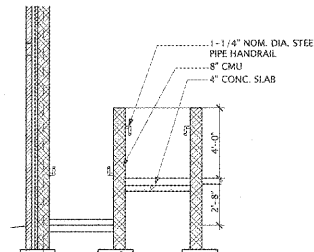
2 SECTION
SCALE: 1/4" = 1'-0"



4 SECTION
SCALE: 1/4" = 1'-0"



3 SECTION
SCALE: 1/4" = 1'-0"



5 SECTION
SCALE: 1/4" = 1'-0"



6 HANDRAIL DETAIL
SCALE: 3/4" = 1'-0"

PLAN DETAIL LEGEND

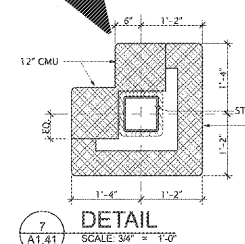
	CONCRETE
	AIR BARRIER
	FACE BRICK
	CONCRETE
	STEEL COLUMN WITH FLOORING
	HANDRAIL/WINDOW JAMB
	ALUM. STOREFRONT DOOR/WINDOW JAMB

- NOTES:**
- REFER TO SPECIFICATIONS FOR SCOPE OF PICK RESISTANT SEALANT APPLICATIONS.
 - ALL EXPOSED VERTICAL CORNERS OF CMU PARTITIONS AND CHASSIS SHALL BE CONSTRUCTED OF BULLNOSE CMU.
 - EXTEND BULLNOSE CMU TO 8" MIN. ABOVE FIN. CEILING OR TO TOP OF WALL WHERE NO FIN. CEILING IS INDICATED.
 - PROVIDE AIR BARRIER ON ALL EXTERIOR CMU.

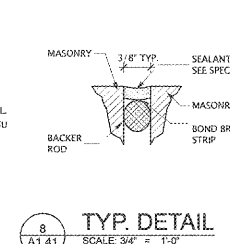
REVISIONS/ISSUANCES

NO.	DATE	DESCRIPTION

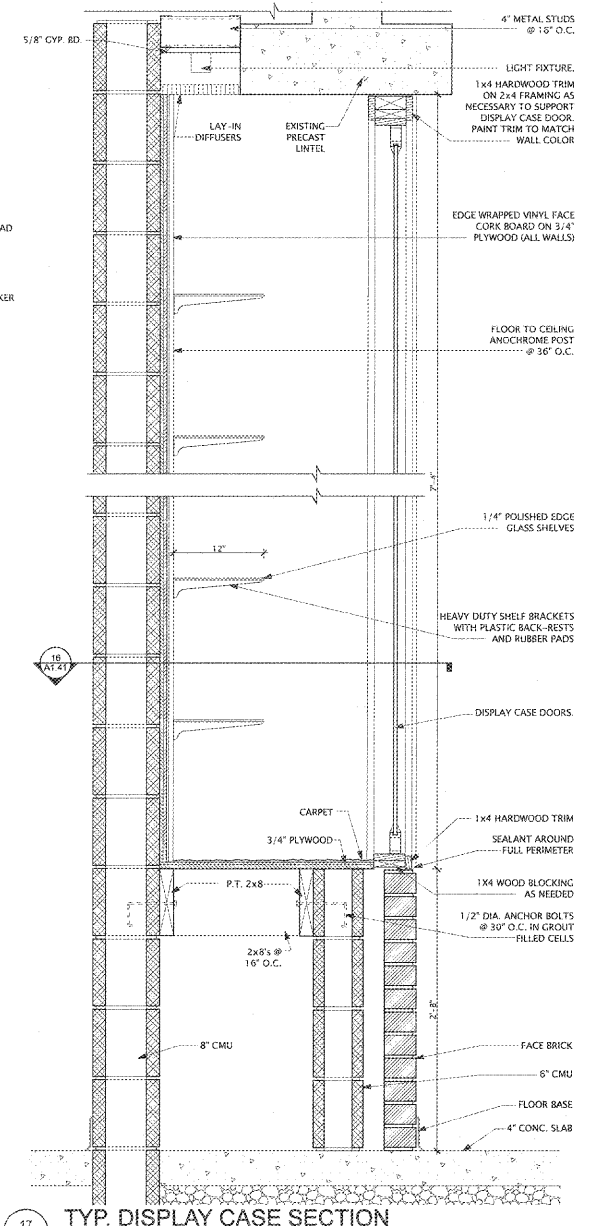
KEY PLAN



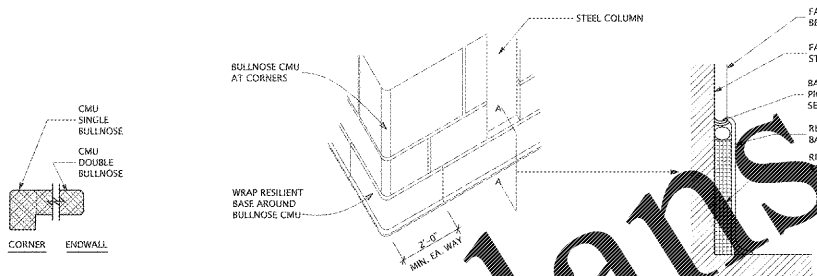
7 DETAIL
SCALE: 3/4" = 1'-0"



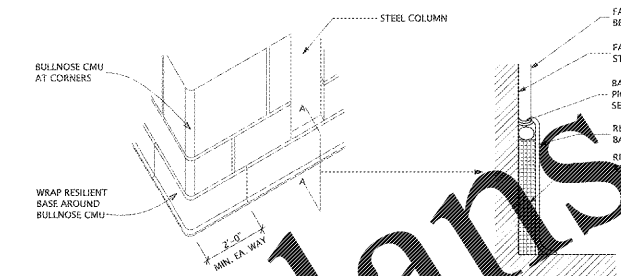
8 TYP. DETAIL
SCALE: 3/4" = 1'-0"



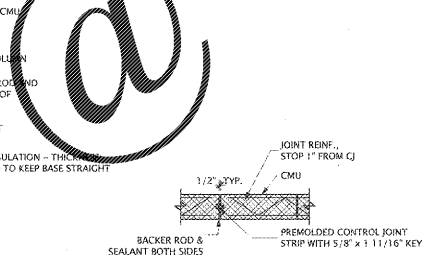
17 TYP. DISPLAY CASE SECTION
SCALE: 1/2" = 1'-0"



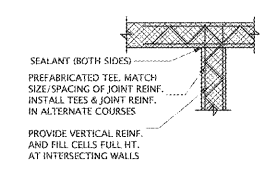
9 TYP. DETAIL
SCALE: 3/4" = 1'-0"



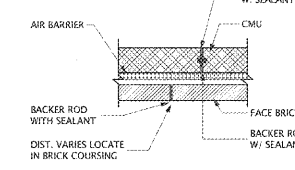
10 TYP. DETAIL
SCALE: 3/4" = 1'-0"



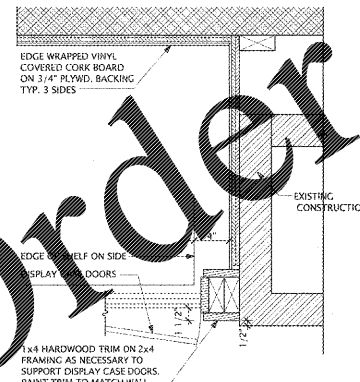
11 TYP. DETAIL
SCALE: 3/4" = 1'-0"



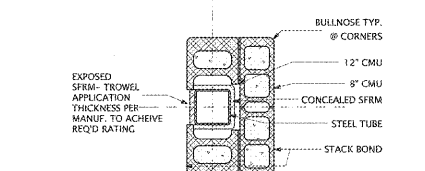
12 TYP. DETAIL
SCALE: 3/4" = 1'-0"



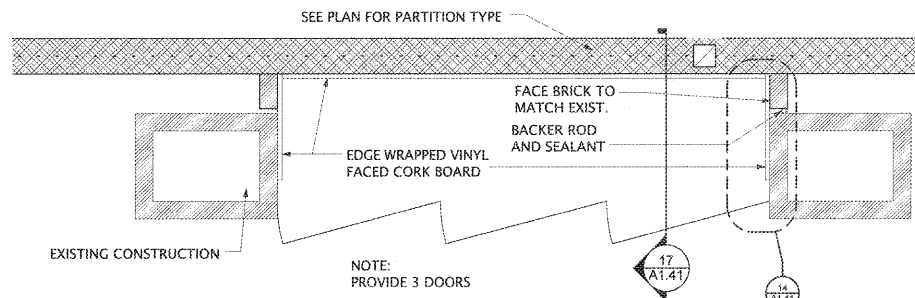
13 TYP. DETAIL
SCALE: 3/4" = 1'-0"



14 DISPLAY CASE JAMB
SCALE: 1/2" = 1'-0"

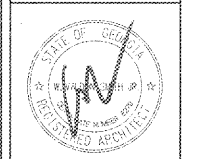


15 D-PLAN 3/4 02 DETAIL
SCALE: 3/4" = 1'-0"



16 DISPLAY CASE PLAN
SCALE: 3/4" = 1'-0"

NOTE: PROVIDE 3 DOORS



Manley Spangler Smith Architects
A Professional Corporation

625 East Taylor St.
P.O. Box 980
Gorham, Georgia 30224
Office 770.227.5473
Fax 770.228.3442

PROJECT:
RENOVATIONS, MODIFICATIONS, & ADDITIONS TO HENRY COUNTY SCHOOLS - GROUP 10 WOODLAND HIGH SCHOOL (ITEM C)
CLIENT:
HENRY COUNTY BOARD OF EDUCATION

SHEET TITLE:
PLAN DETAILS

U.L. 87
F.T.E. 1,887
FACILITY CODE: 675-0408
© 2013 Manley Spangler Smith Architects, PC
PROJECT NUMBER: 201311C
DATE: 08.07.18
SCALE: AS NOTED
DRAWN BY: JS
CHECKED BY: RV

SHEET NO.
A1.41

Order Plans @

WWW.LDILine.com