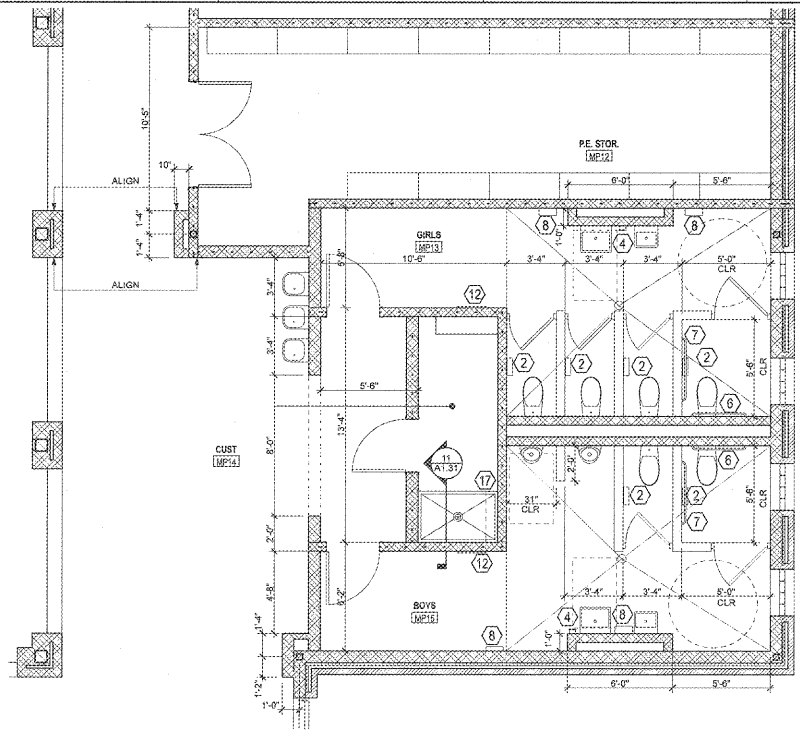


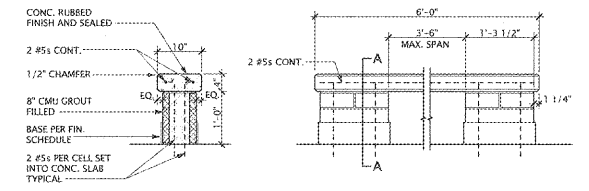
1 ENLARGED TOILET PLAN
SCALE: 1/4" = 1'-0"



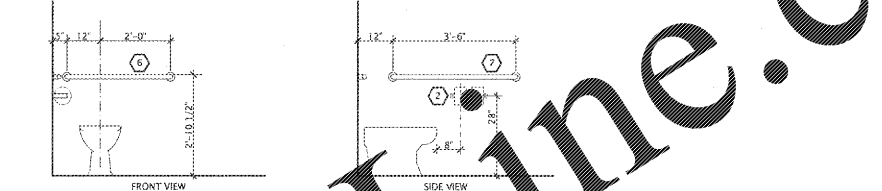
2 ENLARGED TOILET PLAN
SCALE: 1/8" = 1'-0"

ITEM	DESCRIPTION
1	PAPER TOWEL DISPENSER
2	TOILET TISSUE DISPENSER
3	FOLDING SHOWER SEAT (L-SHAPED)
4	SOAP DISPENSER (N.I.C.)
5	NOT USED
6	36" GRAB BAR
7	42" GRAB BAR
8	WARM-AIR HAND DRYER
9	ROBE HOOK
10	SHOWER CURTAIN & ROD
11	WARM-AIR HAIR DRYER
12	MIRROR (24" X 60")
13	NOT USED
14	SHOWER CORNER GRAB BAR (18" X 36")
15	SOAP DISH
16	STAINLESS STEEL SHELF
17	SHELF WITH BROOM HOLDER
18	NOT USED
19	SHOWER CORNER GRAB BAR (36" X 54")

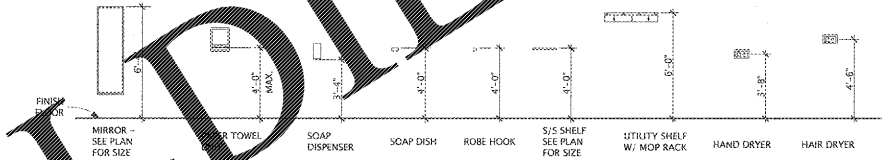
NOTES:
1. ALL ITEMS NOTED AS "N.I.C." SHALL BE PROVIDED BY OWNER AND INSTALLED BY CONTRACTOR.



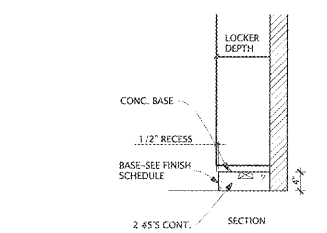
4 LOCKER BENCH DETAIL
SCALE: 3/4" = 1'-0"



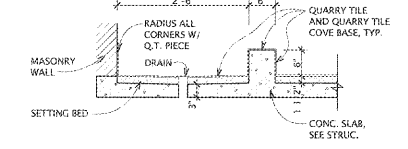
5 TOILET ACCESSORY LOCATIONS
SCALE: 1/2" = 1'-0"



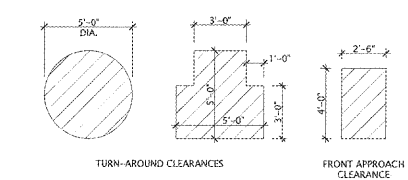
6 TOILET ACCESSORY MOUNTING HEIGHTS
SCALE: 1/4" = 1'-0"



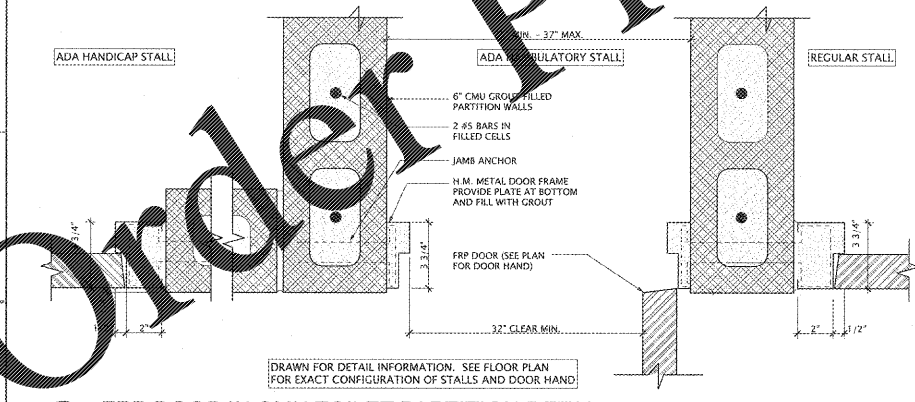
10 SECTION AT LOCKER BASE
SCALE: 3/4" = 1'-0"



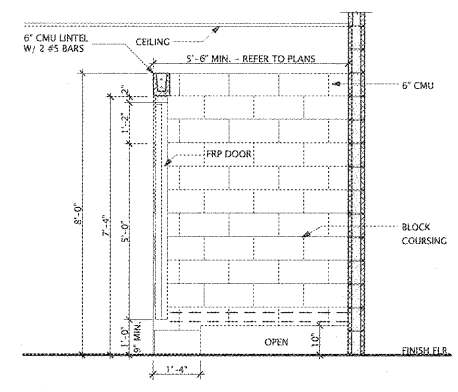
11 JANITOR BASIN SECTION
SCALE: 3/4" = 1'-0"



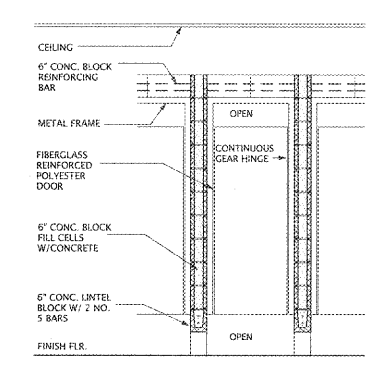
12 ADA CLEARANCES
SCALE: 1/8" = 1'-0"



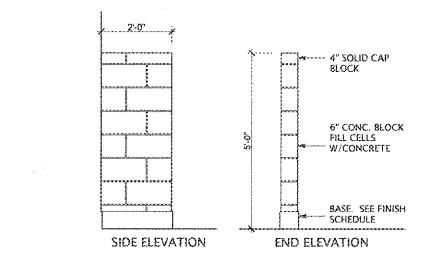
3 FRP DOOR IN CMU TOILET PARTITION DETAIL
SCALE: 3/8" = 1'-0"



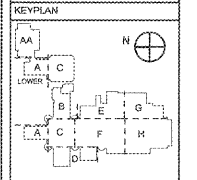
7 CMU TOILET PARTITION SECTION
SCALE: 1/2" = 1'-0"



8 CMU TOILET PTN SECTION
SCALE: 1/2" = 1'-0"



9 CMU URINAL SCREEN ELEVATIONS
SCALE: 1/2" = 1'-0"



Manley Spangler Smith Architects
A Professional Corporation

825 East Taylor St.
P.O. Box 800
Gulf, Georgia 30224
Office 770.227.5473
Fax 770.228.2442

PROJECT:
RENOVATIONS, MODIFICATIONS, & ADDITIONS TO HENRY COUNTY SCHOOLS - GROUP 10 WOODLAND HIGH SCHOOL (ITEM C)
CLIENT:
HENRY COUNTY BOARD OF EDUCATION

SHEET TITLE:
LARGE SCALE TOILET PLANS

U.L. 87
P.L.E. 1.687
FACILITY CODE: 675-0408
© 2018 Manley Spangler Smith Architects, PC
PROJECT NUMBER: 201731C
DATE: 08.07.18
SCALE: AS NOTED
DRAWN BY: JS
CHECKED BY: RV

SHEET NO.:
A1.31

Order Plans @ WWW.IDDLINE.COM