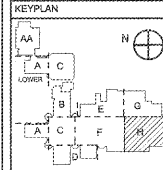


MATCH LINE - SEE SECTOR "G"  
 MATCH LINE - SEE SECTOR "H"

REVISIONS/ISSUANCES



**Manley Spangler Smith Architects**  
 A Professional Corporation

505 East Taylor St.  
 P.O. Box 990  
 Griffin, Georgia 30224  
 Office 770.227.5473  
 Fax 770.228.3442

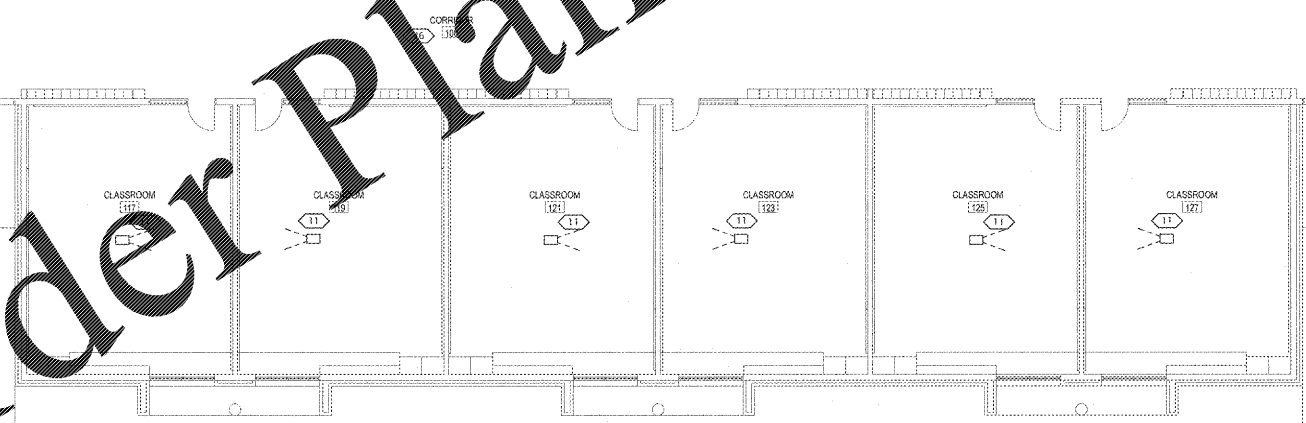
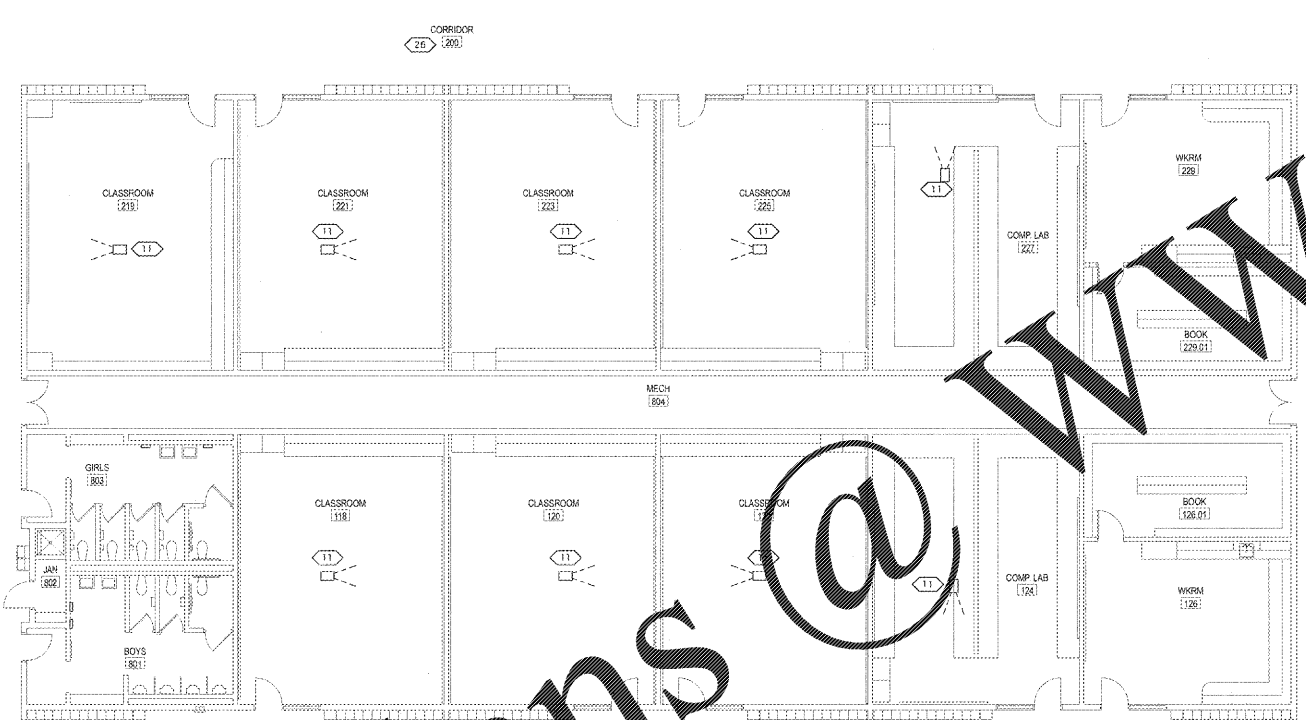
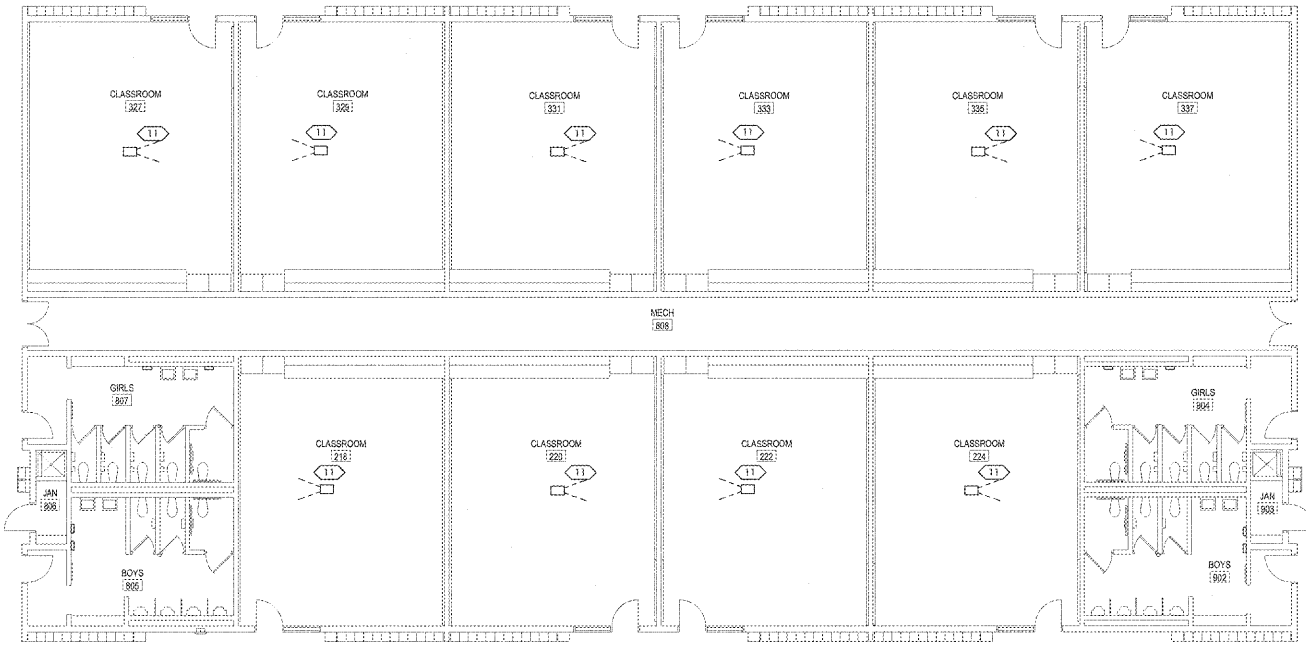
PROJECT:  
**RENOVATIONS, MODIFICATIONS, & ADDITIONS TO HENRY COUNTY SCHOOLS - GROUP 10 WOODLAND HIGH SCHOOL (ITEM C)**  
 CLIENT:  
 HENRY COUNTY BOARD OF EDUCATION

SHEET TITLE:  
**FLOOR PLAN - SECTOR "H"**

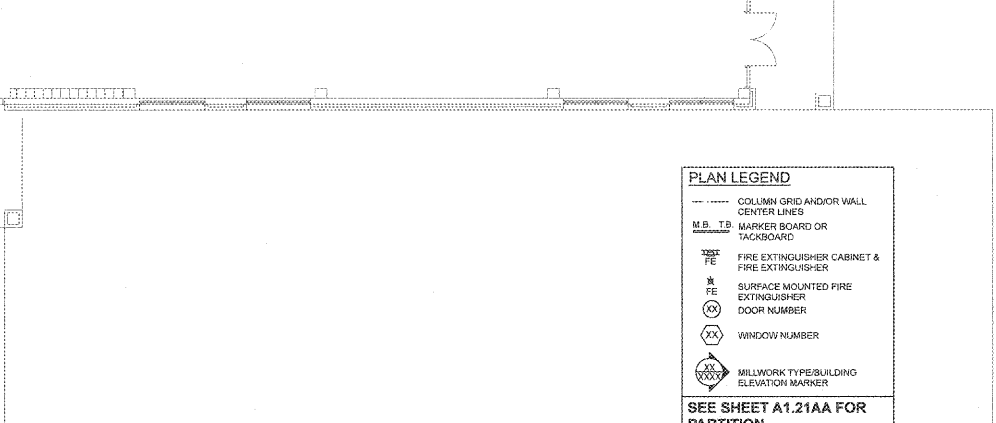
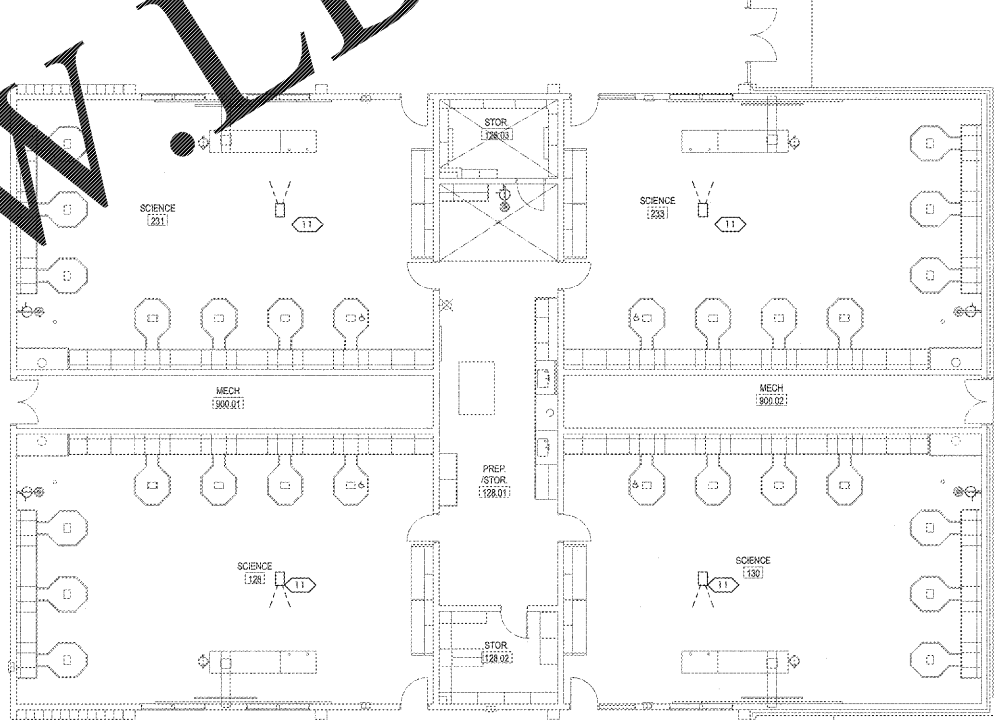
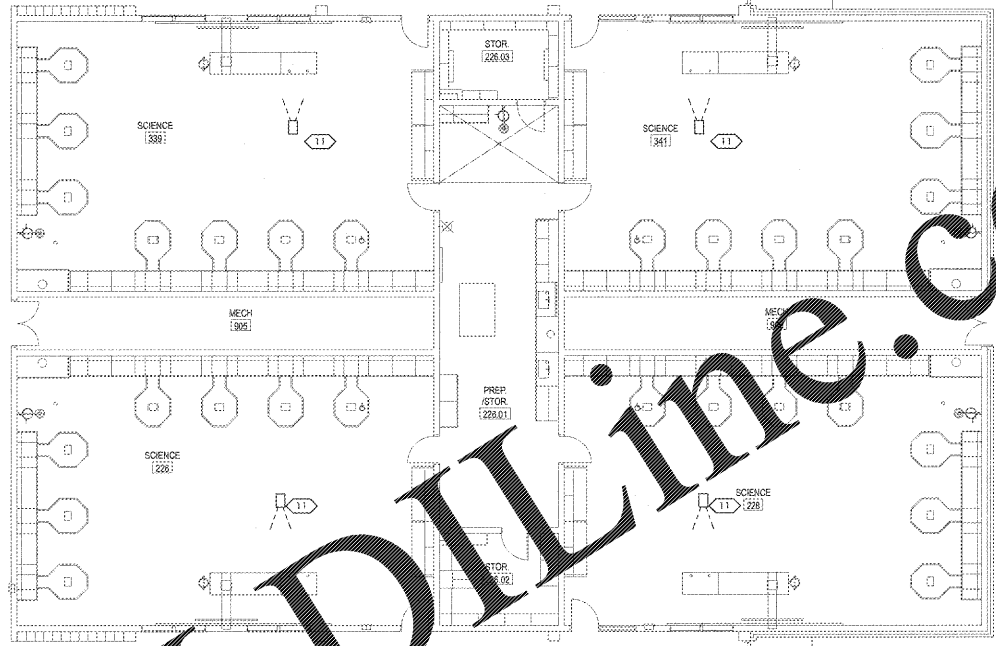
LU: 87  
 F.T.E.: 1,987  
 FACILITY CODE: 675-0408

© 2014 Manley Spangler Smith Architects, PC  
 PROJECT NUMBER: 201731C  
 DATE: 06.07.18  
 SCALE: AS NOTED  
 DRAWN BY: JS  
 CHECKED BY: RV

SHEET NO.:  
**A1.21H**



**FLOOR PLAN - SECTOR "G"**  
 SCALE: 1/8" = 1'-0"



**PLAN LEGEND**

- COLLUM GRID AND/OR WALL CENTER LINES
- M.B., T.B. MARKER BOARD OR TACKBOARD
- FE FIRE EXTINGUISHER CABINET & FIRE EXTINGUISHER
- FE SURFACE MOUNTED PIRE EXTINGUISHER
- DOOR NUMBER
- XX WINDOW NUMBER
- XX MILWORK TYPEBUILDING ELEVATION MARKER

**SEE SHEET A1.21AA FOR PARTITION TYPE SCHEDULE, GENERAL NOTES AND PLAN KEY NOTES**

Order Plans @

WWW.LDLine.com