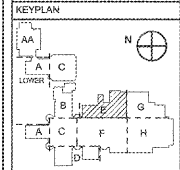


**PLAN LEGEND**

- COLUMN GRID AND/OR WALL CENTER LINES
- M.B. T.B. MARKER BOARD OR TACKBOARD
- FE FIRE EXTINGUISHER CABINET & FIRE EXTINGUISHER
- \* FE SURFACE MOUNTED FIRE EXTINGUISHER
- (XX) DOOR NUMBER
- (XX) WINDOW NUMBER
- (XXX) MILLWORK TYPE/BUILDING ELEVATION MARKER

SEE SHEET A1.21AA FOR PARTITION TYPE SCHEDULE, GENERAL NOTES AND PLAN KEY NOTES

REVISIONS/ISSUANCES



**Manley Spangler Smith Architects**  
A Professional Corporation

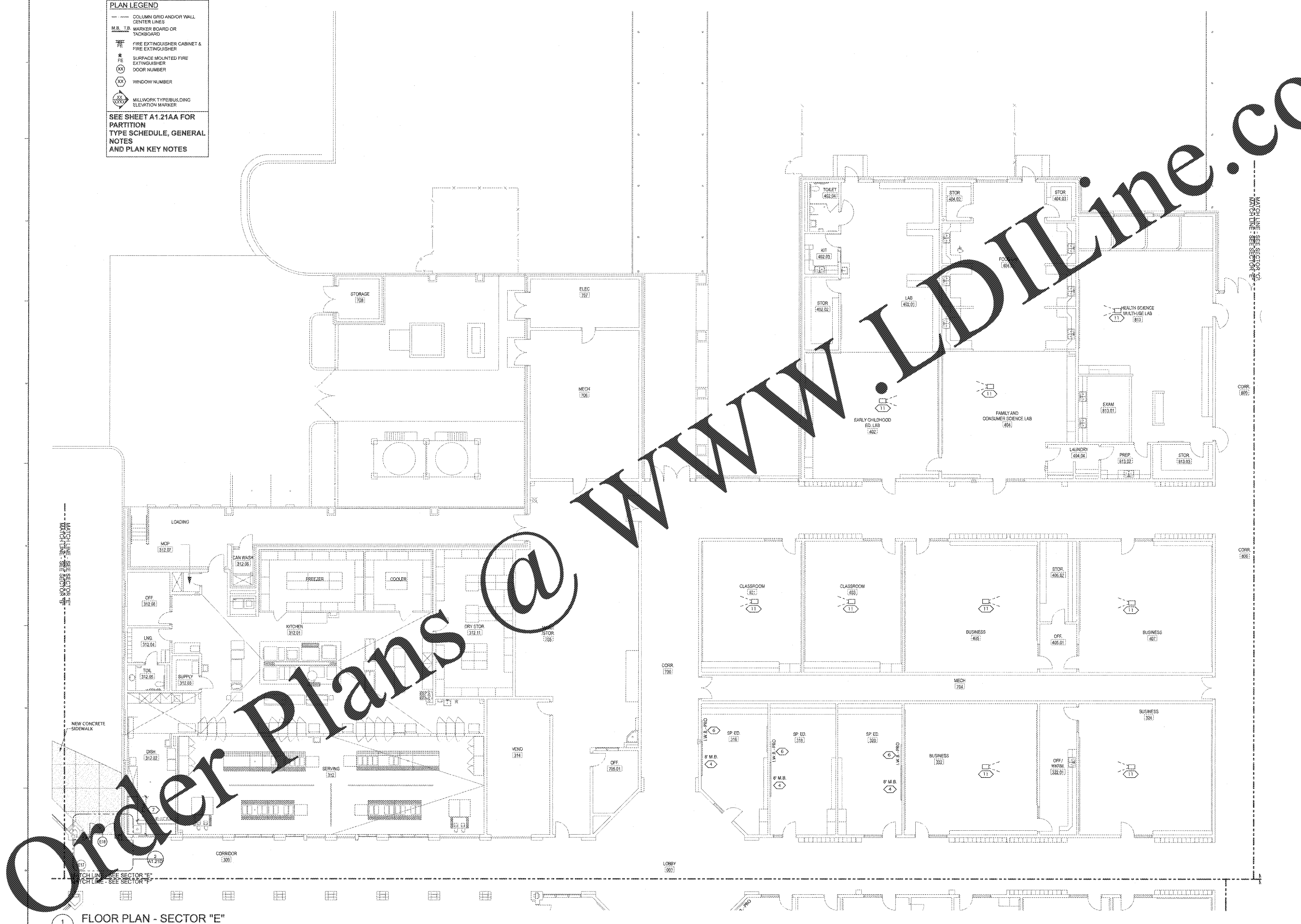
625 East Taylor St.  
P.O. Box 950  
Gwin, Georgia 30224  
Office 770.227.5473  
Fax 770.228.3442

PROJECT:  
RENOVATIONS, MODIFICATIONS, & ADDITIONS TO HENRY COUNTY SCHOOLS - GROUP 10 WOODLAND HIGH SCHOOL (ITEM C)  
CLIENT:  
HENRY COUNTY BOARD OF EDUCATION

SHEET TITLE:  
FLOOR PLAN - SECTOR "E"

LU: 37  
F.T.E: 1,687  
FACILITY CODE: 675-0436  
© 2015 Manley Spangler Smith Architects, PC  
PROJECT NUMBER: 2012310  
DATE: 06.07.18  
SCALE: AS NOTED  
DRAWN BY: JS  
CHECKED BY: RV

SHEET NO.  
**A1.21E**



**FLOOR PLAN - SECTOR "E"**  
SCALE 1/8" = 1'-0"