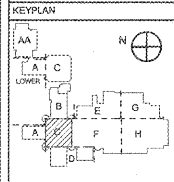


REVISIONS/ISSUANCES

NO.	DATE	DESCRIPTION



Manley Spangler Smith Architects
A Professional Corporation

675 East Taylor St.
P.O. Box 860
Griffin, Georgia 30224
Office 770.227.5473
Fax 770.226.3442

PROJECT:
RENOVATIONS, MODIFICATIONS, & ADDITIONS TO HENRY COUNTY SCHOOLS - GROUP 10 WOODLAND HIGH SCHOOL (ITEM C)

CLIENT:
HENRY COUNTY BOARD OF EDUCATION

SHEET TITLE:
FLOOR PLAN - SECTOR "C"

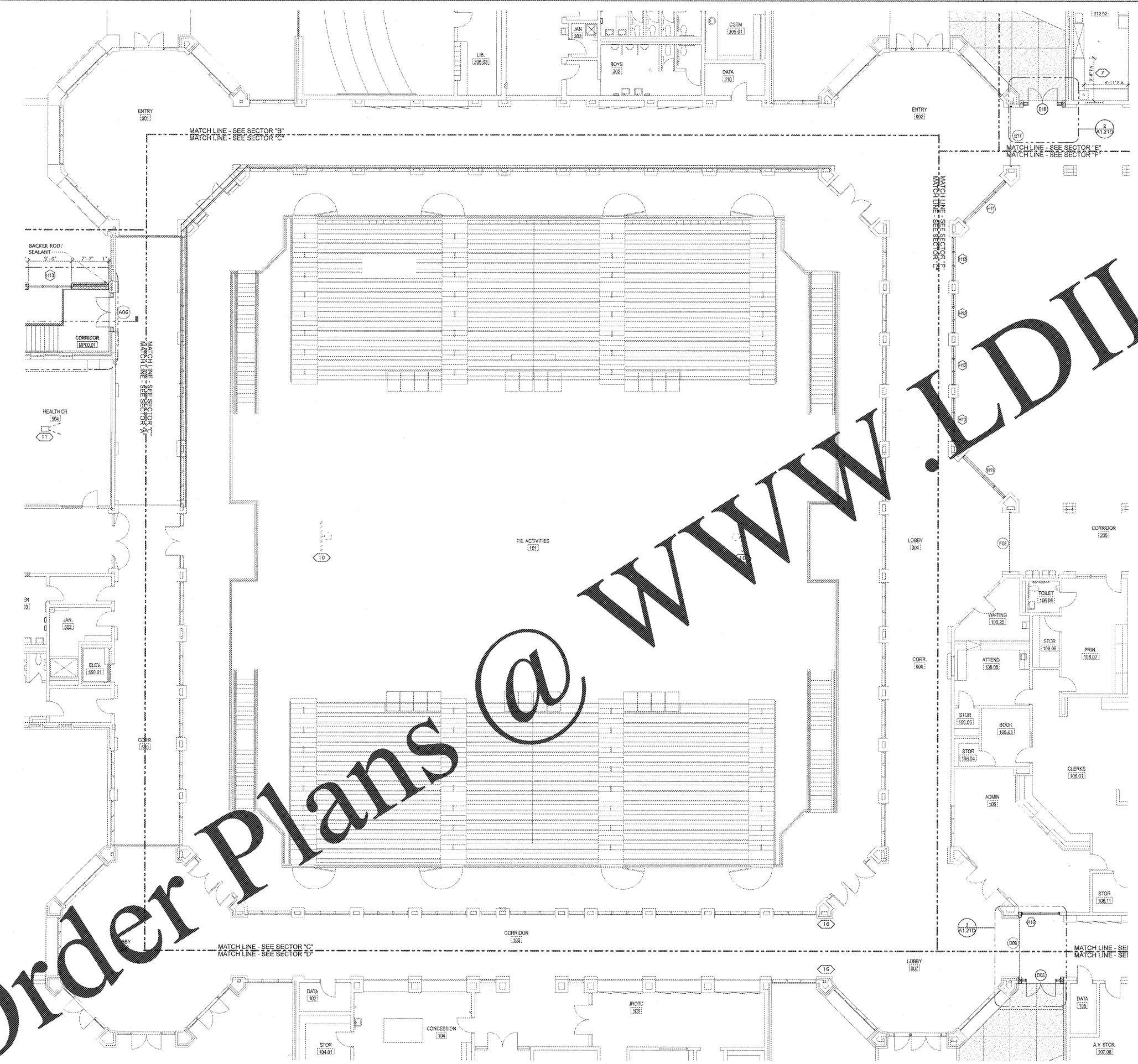
LU : 07
FT.E : 1.007
FACILITY CODE: 675-0408
© 2018 Manley Spangler Smith Architects, PC
PROJECT NUMBER: 201731C
DATE: 08.07.18
SCALE: AS NOTED
DRAWN BY: JWS
CHECKED BY: RV

DRAWING NO.:
A1.21C

PLAN LEGEND

- COLUMN GRID AND/OR WALL CENTER LINES
- M.B. T.B. MARKER BOARD OR TACKBOARD
- FE FIRE EXTINGUISHER CABINET & FIRE EXTINGUISHER
- FE SURFACE MOUNTED FIRE EXTINGUISHER
- XX DOOR NUMBER
- XX WINDOW NUMBER
- XXX MILLWORK TYPE/BUILDING ELEVATION MARK

SEE SHEET A1.21AA FOR PARTITION TYPE SCHEDULE GENERAL NOTES AND PLAN KEY NOTES



FLOOR PLAN - SECTOR "C"
SCALE: 1/8" = 1'-0"

Order Plans @

WWW.LDILine.com