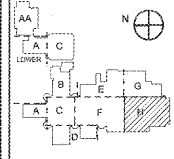


REVISIONS/ISSUANCES

NO.	DATE	DESCRIPTION

KEYPLAN



Manley Spangler Smith Architects
A Professional Corporation

525 East Taylor St.
P.O. Box 690
Griffin, Georgia 30224
Office 770.227.5473
Fax 770.228.5442

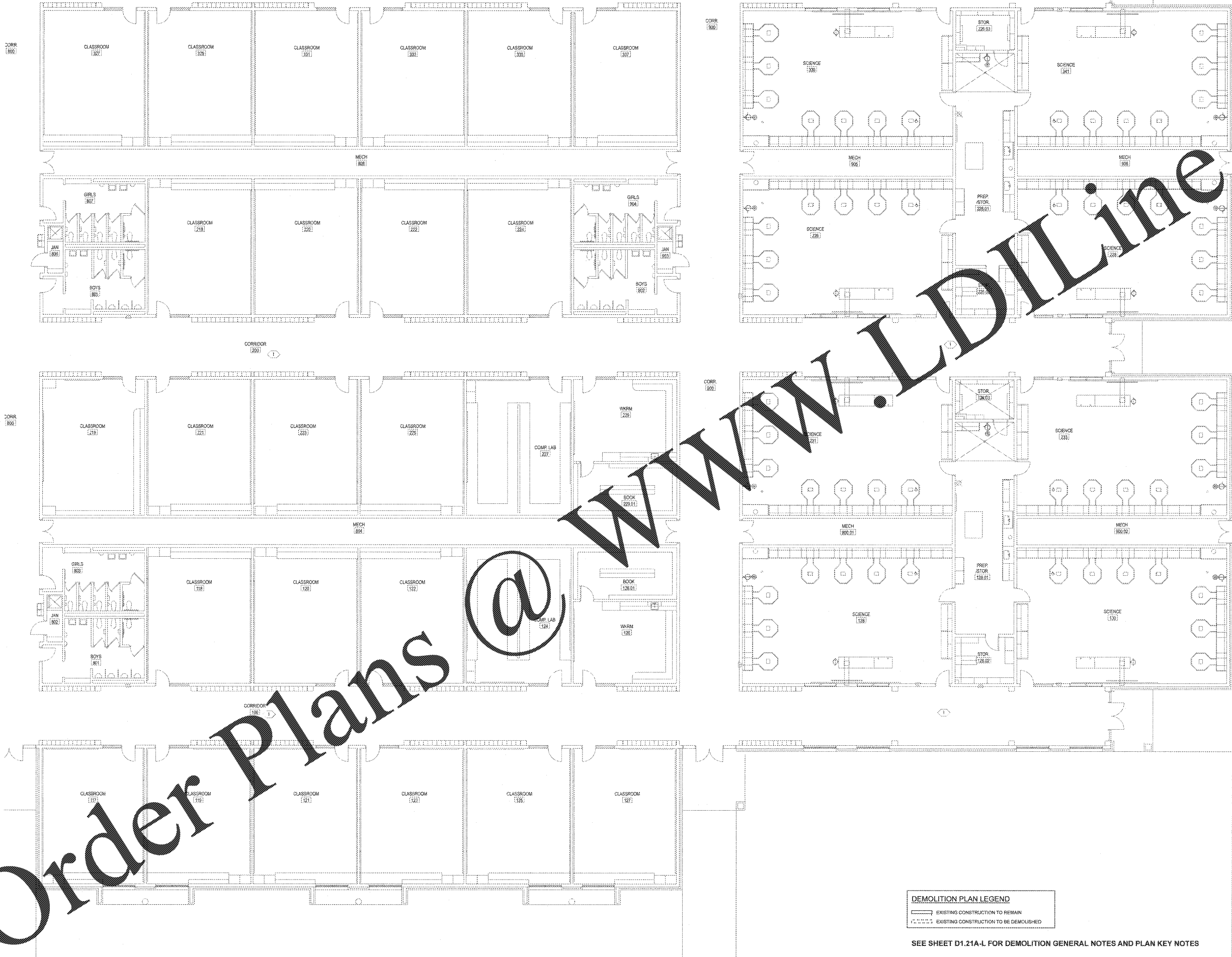
PROJECT:
RENOVATIONS, MODIFICATIONS, & ADDITIONS TO HENRY COUNTY SCHOOLS - GROUP 10 WOODLAND HIGH SCHOOL (ITEM C)
CLIENT:
HENRY COUNTY BOARD OF EDUCATION

SHEET TITLE:
DEMOLITION PLAN - SECTOR "H"

LU : 57
FTL : 1.687
FACILITY CODE: 675-0408
© 2018 Manley Spangler Smith Architects, PC
PROJECT NUMBER: 201721C
DATE: 06.07.18
SCALE: AS NOTED
DRAWN BY: JS
CHECKED BY: RV

SHEET NO.
D1.21H

MATCH LINE - SEE SECTOR "G"
MATCH LINE - SEE SECTOR "I"



SEE SHEET D1.21A-L FOR DEMOLITION GENERAL NOTES AND PLAN KEY NOTES

Order Plans @ www.LDILine.com

FLOOR PLAN - SECTOR "G"
SCALE 1/8" = 1'-0"