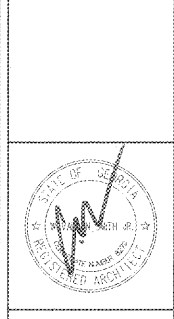
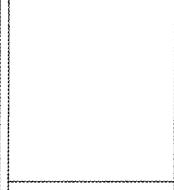
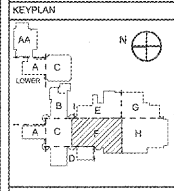


REVISIONS/ISSUANCES

NO.	DATE	DESCRIPTION



**Manley Spangler Smith Architects**  
A Professional Corporation

525 East Taylor St.  
P.O. Box 680  
Griffin, Georgia 30224  
Office 770.227.5473  
Fax 770.228.3442

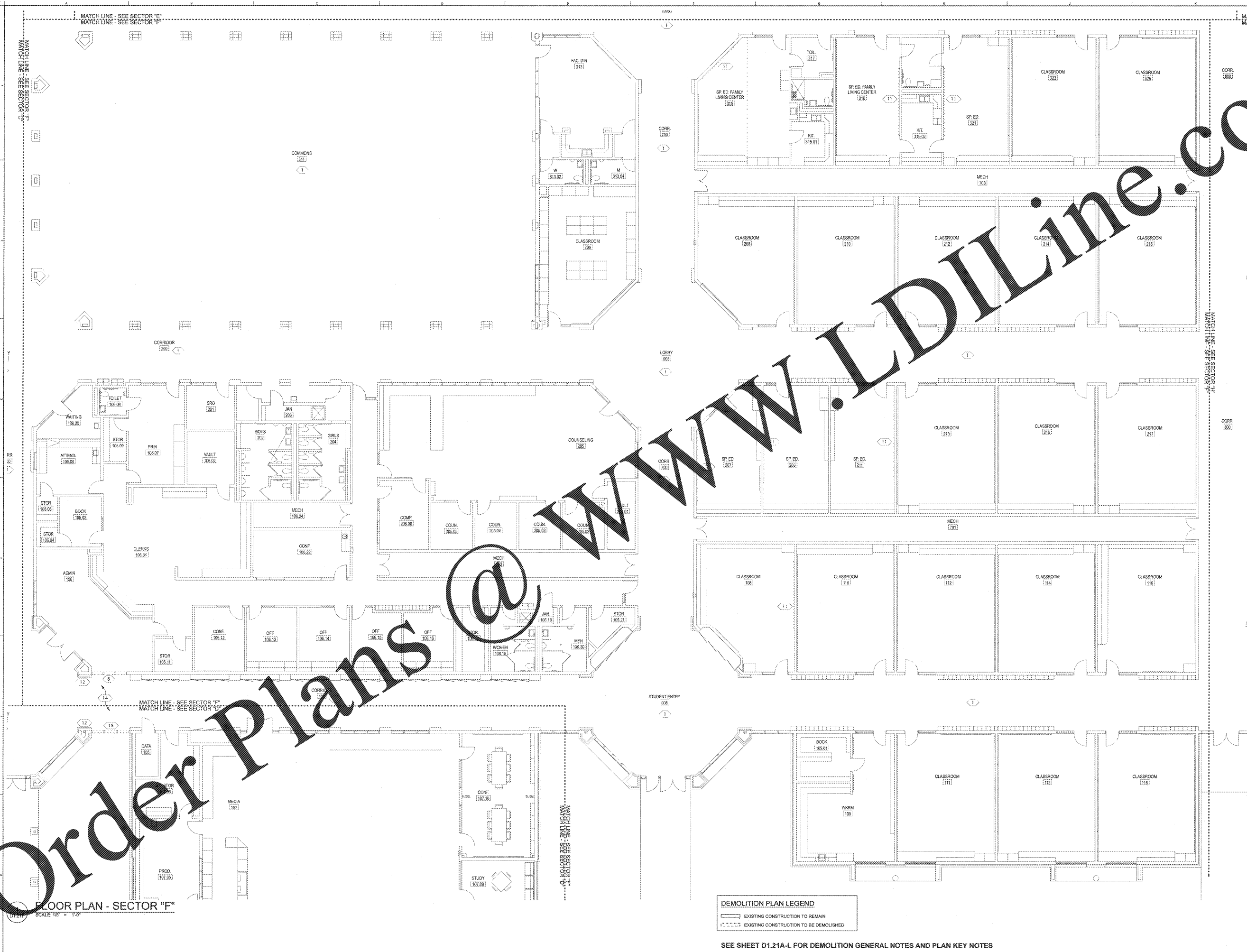
PROJECT:  
**RENOVATIONS, MODIFICATIONS, & ADDITIONS TO HENRY COUNTY SCHOOLS - GROUP 10 WOODLAND HIGH SCHOOL (ITEM C)**

CLIENT:  
**HENRY COUNTY BOARD OF EDUCATION**

SHEET TITLE:  
**DEMOLITION PLAN - SECTOR "F"**

1:1 = 87  
P.L.E. = 1 897  
FACILITY CODE: 675-0408  
© 2018 Manley Spangler Smith Architects, PC  
PROJECT NUMBER: 20171/C  
DATE: 08.07.18  
SCALE: AS NOTED  
DRAWN BY: JS  
CHECKED BY: RV

SHEET NO.: **D1.21F**



Order Plans @

FLOOR PLAN - SECTOR "F"  
SCALE: 1/8" = 1'-0"

DEMOLITION PLAN LEGEND

	EXISTING CONSTRUCTION TO REMAIN
	EXISTING CONSTRUCTION TO BE DEMOLISHED

SEE SHEET D1.21A-L FOR DEMOLITION GENERAL NOTES AND PLAN KEY NOTES