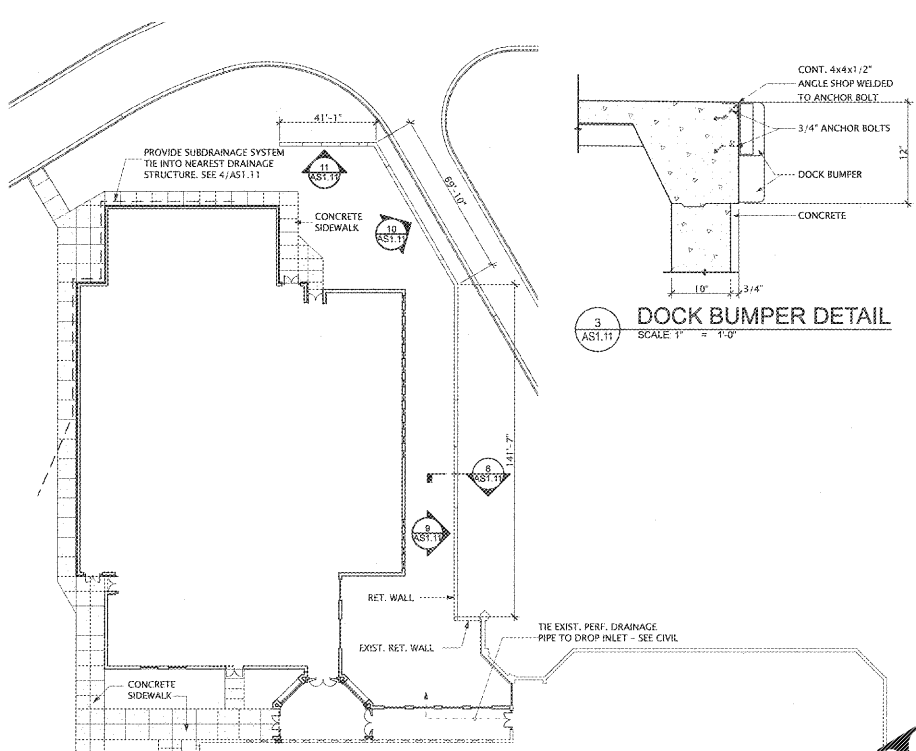
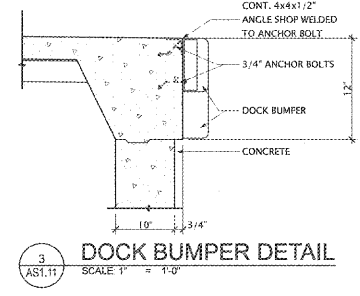


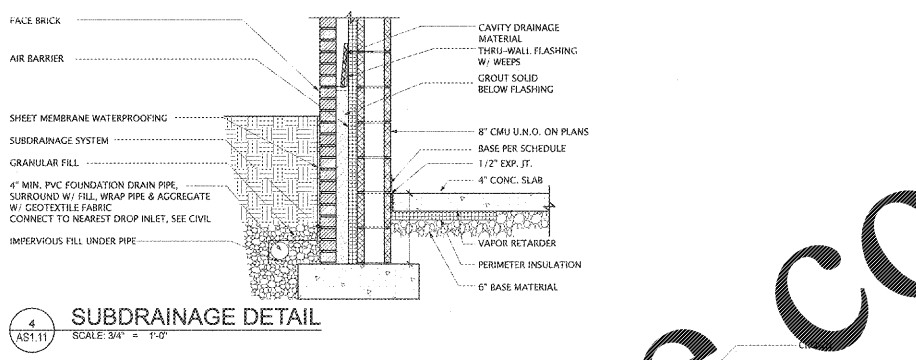
1 ARCHITECTURAL SITE PLAN UPPER LEVEL  
SCALE: 1" = 30'



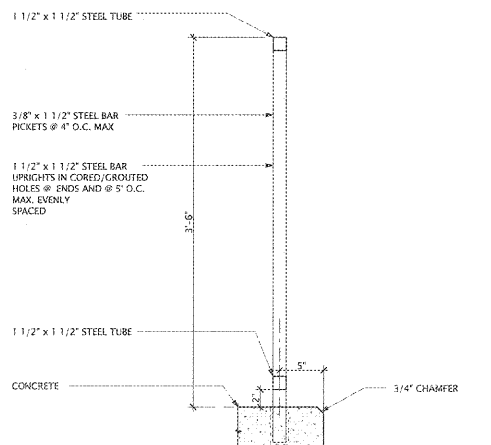
2 ARCHITECTURAL SITE PLAN LOWER LEVEL  
SCALE: 1" = 30'



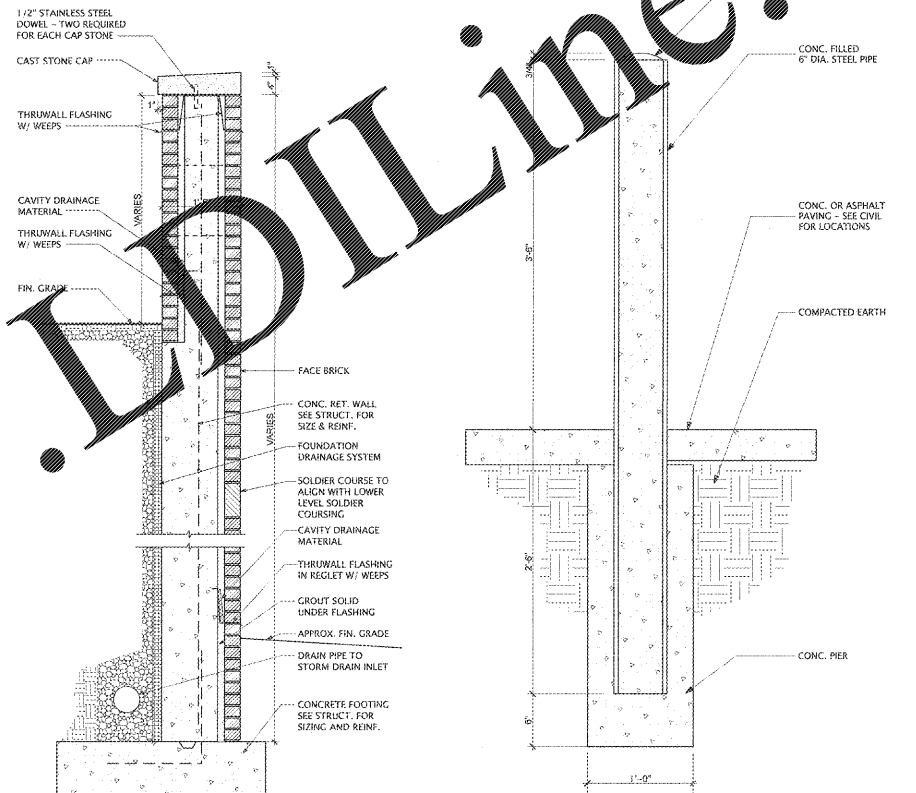
3 DOCK BUMPER DETAIL  
SCALE: 1" = 1'-0"



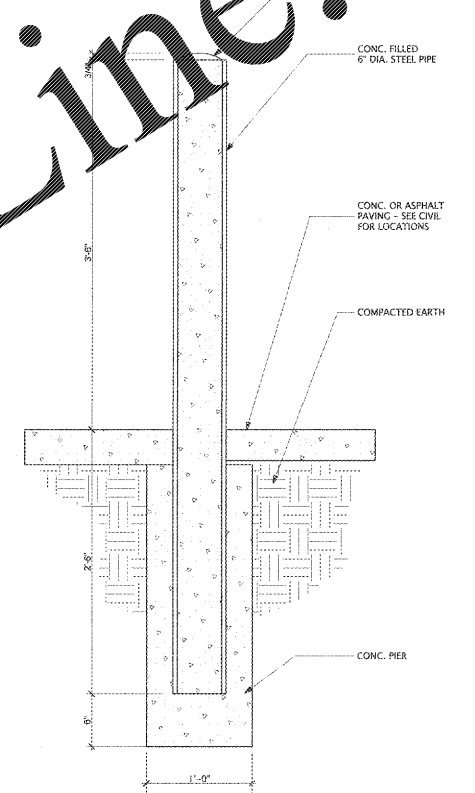
4 SUBDRAINAGE DETAIL  
SCALE: 3/4" = 1'-0"



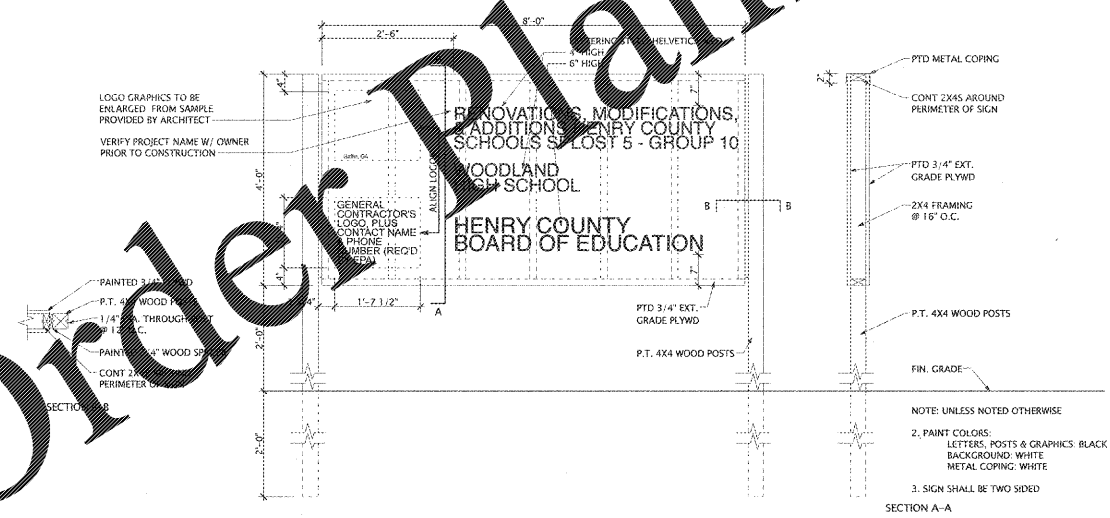
5 GUARDRAIL DETAIL  
SCALE: 1 1/2" = 1'-0"



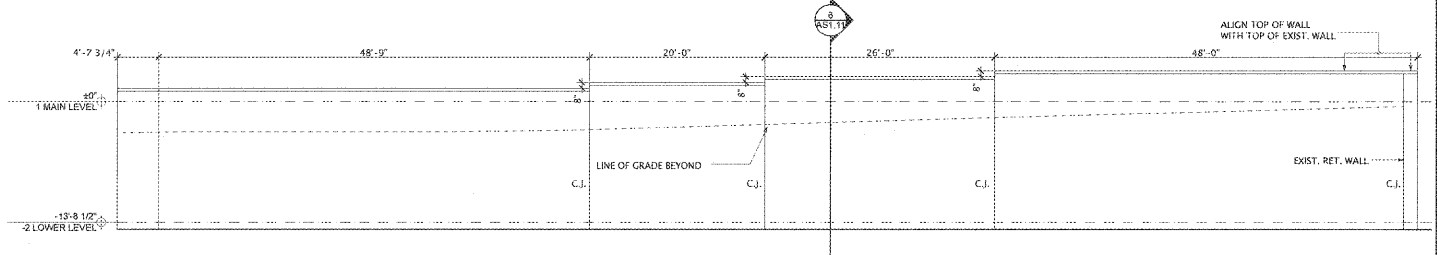
6 RETAINING WALL SECTION  
SCALE: 3/4" = 1'-0"



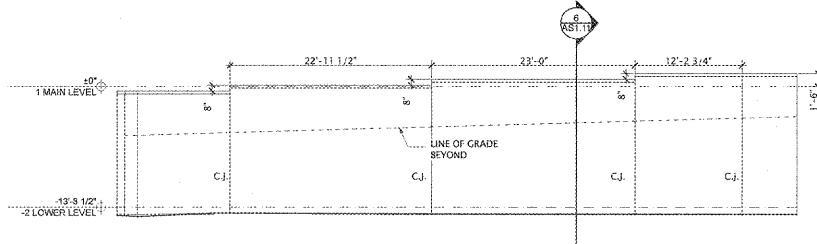
7 PIPE BOLLARD DETAIL  
SCALE: 1 1/2" = 1'-0"



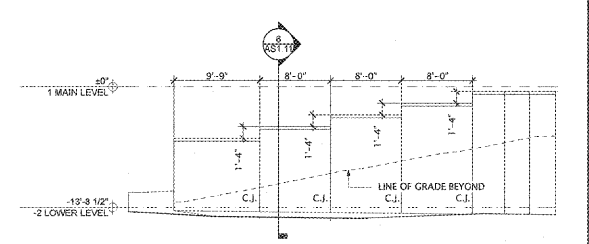
8 PROJECT SIGN  
SCALE: 3/4" = 1'-0"



9 RETAINING WALL ELEVATION  
SCALE: 1/8" = 1'-0"



10 RETAINING WALL ELEVATION  
SCALE: 1/8" = 1'-0"



11 RETAINING WALL ELEVATION  
SCALE: 1/8" = 1'-0"

REVISIONS/ISSUANCES	

KEYPLAN

**Manley Spangler Smith Architects**  
A Professional Corporation

525 East Taylor St.  
P.O. Box 990  
Gadsden, Georgia 30224  
Office 770.227.5473  
Fax 770.228.3442

PROJECT:  
RENOVATIONS, MODIFICATIONS, & ADDITIONS TO HENRY COUNTY SCHOOLS - GROUP 10 WOODLAND HIGH SCHOOL (ITEM C)  
CLIENT:  
HENRY COUNTY BOARD OF EDUCATION

SHEET TITLE:  
ARCHITECTURAL SITE PLAN

U.I.: 87  
P.T.E.: 1,687  
FACILITY CODE: 875-0408  
© 2018 Manley Spangler Smith Architects, PC  
PROJECT NUMBER: 201731C  
DATE: 06.07.18  
SCALE: AS NOTED  
DRAWN BY: JS  
CHECKED BY: RV

SHEET NO.:  
**AS1.11**

Order Plans @ www.LDLine.com