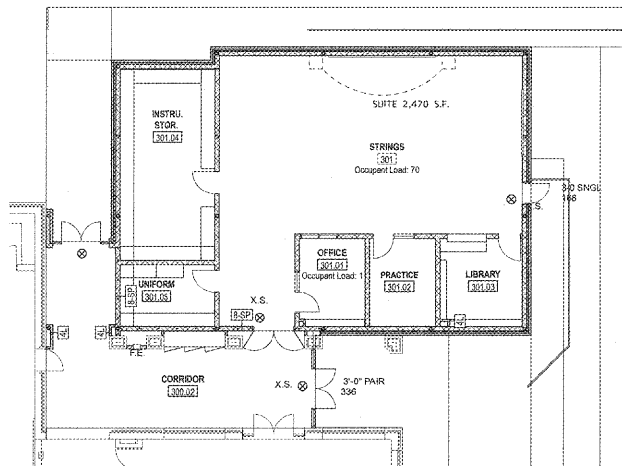


1 LIFE SAFETY PLAN - SECTOR "A-L"
SCALE: 3/32" = 1'-0"



2 LIFE SAFETY PLAN - SECTOR "B"
SCALE: 3/32" = 1'-0"

CODE REVIEW
DATE OF REVIEW 01/01/18
CODE REVIEW BASED ON THE BELOW APPLICABLE CODES WITH GEORGIA AMENDMENTS:
International Building Code 2012 edition
International Fuel Gas Code 2012 edition
International Mechanical Code 2012 edition
International Plumbing Code 2012 edition
National Electrical Code 2017 edition
International Fire Code 2012 edition
International Energy Conservation Code 2009 edition
NFPA 101 2012 edition

OCCUPANCY:
Sector A-L - Assembly A-4 (Multi-Purpose Gym),
Sector B Educational (Shrinks)

CONSTRUCTION TYPE:
IBC: Type I-B Fully Sprinklered
Note: Existing building is also Type I-B Fully Sprinklered

PER TABLE 503:
Stories Permitted: 5
Height Permitted: 180'
Area Permitted: UL

BUILDING ELEMENT RATINGS:
Per IBC Tables 601 and 602

STORAGE ROOMS:
Proposed general storage rooms are not high hazard.
No separation but sprinklered per NFPA 14.3.2.1 (a)
No fire rating required but must resist passage of smoke

MECHANICAL ROOMS:
No separation but sprinklered per NFPA 14.3.2.1 (a)
No fire rating required but must resist passage of smoke

JANITOR CLOSETS:
No separation but sprinklered per NFPA 14.3.2.1 (a)
No fire rating required but must resist passage of smoke

ELECTRICAL ROOMS:
Rating not required if transformer inside room is less than 112 1/2 kVA
Per NEC 450.21 (B) or using insulation which exempts requirement

CORRIDORS:
Not rated per NFPA 14.3.2.1 (a) Section 10.2
Must resist passage of smoke and are Smoke Partitions (NFPA 101 7.10.1)

STAGE:
Stage is 10' high, 50' wide, and 50' deep
Stage area is less than 1000 SF thus, no separation required, no vault required, (NFPA 12.2.1.2)

SEPARATION OF ASSEMBLY OCCUPANCIES:
See NFPA 101 12.2.1.2 and Handbook commentary

BUILDING AREA, OCCUPANCY LOAD AND EGRESS CAPACITY:
Main Floor Area: 11,590 SF
Main Floor Area per Floor: 4 min. (Occupancy load is more than 500, NFPA 7.4.1.2)

TRAVEL DISTANCES PER NFPA 101 Handbook Table A.7.5 (continued):
Common Path Limit: 100'
Dead-end Limit: 50'
Travel Distance Limit: 200'
(Assembly A-4)
Common Path Limit: 75'
Dead-end Limit: 20'
Travel Distance Limit: 200'
FIRE DEPARTMENT ACCESS
Provided per IFC 2012

Note: State licensed installer will submit plans for the Sprinkler and Alarm Systems to the HENRY COUNTY FIRE MARSHAL'S office for review and approval prior to installation.

DOOR EGRESS CAPACITIES			
DOOR	CLEAR WIDTH	CAPACITY (PERSONS)	PLAN SYMBOL
3'-0" SINGLE	33 5/8"	168	3-0 SINGL 168
3'-0" PAIR	67 3/4"	336	3-0 PAIR 336
3'-6" SINGLE	39 5/8"	198	3-6 SINGL 198
3'-6" PAIR	78 1/4"	396	3-6 PAIR 396
4'-0" SINGLE	45 5/8"	228	4-0 SINGL 228
4'-0" PAIR	91 1/4"	456	4-0 PAIR 456

OCCUPANT LOAD FACTORS PER NFPA TABLE 7.3.1.2	
ASSEMBLY (CONCENTRATED)	1 NSF/PERSON
ASSEMBLY (LESS CONCENTRATED)	15 NSF/PERSON
BLEACHERS	10 NSF/PERSON
KITCHEN	100 NSF/PERSON
SERVERY LINE	15 NSF/PERSON
SHOPS, LABS	20 NSF/PERSON
BUSINESS (ADMIN AREA)	100 NSF/PERSON
MEDIA READING AREA	50 NSF/PERSON
MEDIA STACK AREA	100 NSF/PERSON
STAGES	15 NSF/PERSON
CLASSROOMS	20 NSF/PERSON
WEIGHT ROOM	20 NSF/PERSON
WRESTLING ROOM	15 NSF/PERSON
LOCKER ROOMS	15 NSF/PERSON

REVISIONS/ISSUANCES

NO.	DATE	DESCRIPTION

KEYPLAN

LEGEND

- EXIT SIGN = X.S.
- FIRE EXTINGUISHER = F.E.
- PARTITION TYPE

NOTES:

- SEE MEP DRAWINGS FOR LOCATION OF FLOOR STATIONS, SMOKE DETECTORS, SMOKE DAMPERS, STROBES AND OTHER COMMUNICATION/FIRE PROTECTION DEVICES

Manley Spangler Smith Architects
A Professional Corporation

325 East Taylor St.
P.O. Box 930
Giffin, Georgia 30224
Office 770.227.5473
Fax 770.228.3442

PROJECT:
RENOVATIONS, MODIFICATIONS, & ADDITIONS TO HENRY COUNTY SCHOOLS - GROUP 10 WOODLAND HIGH SCHOOL (ITEM C)

CLIENT:
HENRY COUNTY BOARD OF EDUCATION

SHEET TITLE:
LIFE SAFETY PLAN - SECTOR "B"

U: 87
FTE: 1.687
FACILITY CODE: 675-0408
© 2018 Manley Spangler Smith Architects, PC
PROJECT NUMBER: 201731C
DATE: 06.07.18
SCALE: AS NOTED
DRAWN BY: JS
CHECKED BY: RV

SHEET NO.:
ALS.1

Order Plans @

WWW.LDLINE.COM