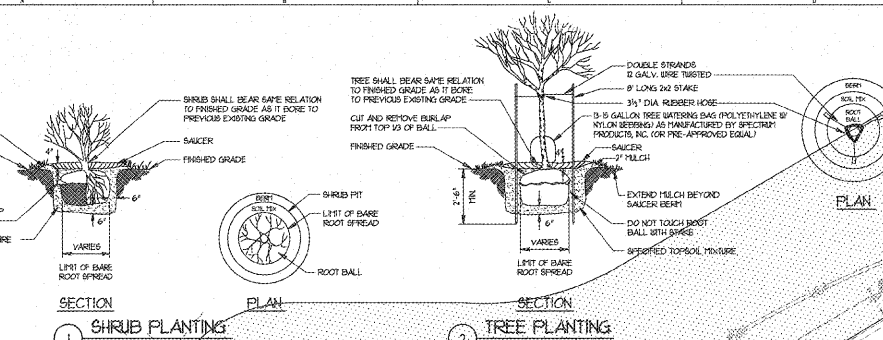
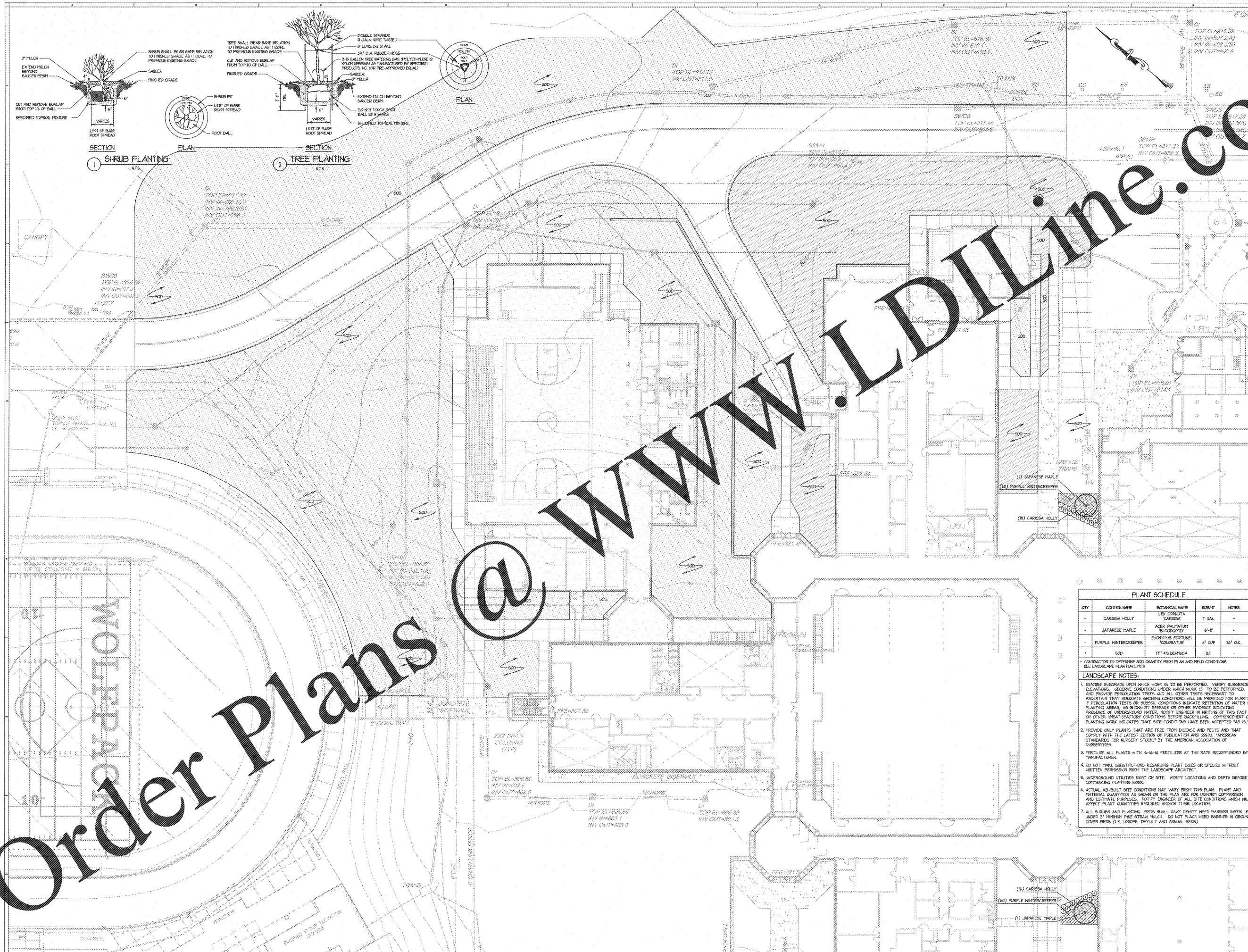


Order Plans @ www.LDILine.com



PLANT SCHEDULE				
QTY	COMMON NAME	BOTANICAL NAME	SIZE/WT	NOTES
-	CARISSA HOLLY	ILEX CORNUTA 'CARISSA'	1 GAL.	-
-	JAPANESE MAPLE	ACER PALMATUM 'BLOODGOOD'	6'-8'	-
-	PURPLE WINTERCREEPER	EUONITIS FORTUNEI 'COLORATUS'	4" CLIP	36" O.C.
-	SOD	TIF 45 BERBERIDA	6"	-

- LANDSCAPE NOTES:**
- EXAMINE SUBGRADE UPON WHICH WORK IS TO BE PERFORMED. VERIFY SUBGRADE ELEVATIONS, OBSERVE CONDITIONS UNDER WHICH WORK IS TO BE PERFORMED, AND PROVIDE PERCOLATION TESTS AND ALL OTHER TESTS NECESSARY TO ASCERTAIN THAT ADEQUATE GROWING CONDITIONS WILL BE PROVIDED FOR PLANTS. IF PERCOLATION TESTS OR SUBSOIL CONDITIONS INDICATE RETENTION OF WATER IN PLANTING AREAS, AS SHOWN BY SEEPAGE OR OTHER EVIDENCE INDICATING PRESENCE OF UNDERGROUND WATER, NOTIFY ENGINEER IN WRITING OF THIS FACT OR OTHER UNSATISFACTORY CONDITIONS BEFORE BACKFILLING. CORRECTIVE PLANTING WORK INDICATED THAT SITE CONDITIONS HAVE BEEN ACCEPTED "AS IS."
 - PROVIDE ONLY PLANTS THAT ARE FREE FROM DISEASE AND PESTS AND THAT COMPLY WITH THE LATEST EDITION OF PUBLICATION ANSI Z606.1 "AMERICAN STANDARDS FOR NURSERY STOCK," BY THE AMERICAN ASSOCIATION OF NURSERYPERS.
 - FERTILIZE ALL PLANTS WITH 16-16-16 FERTILIZER AT THE RATE RECOMMENDED BY MANUFACTURER.
 - DO NOT MAKE SUBSTITUTIONS REGARDING PLANT SIZES OR SPECIES WITHOUT WRITTEN PERMISSION FROM THE LANDSCAPE ARCHITECT.
 - UNDERGROUND UTILITIES EXIST ON SITE. VERIFY LOCATIONS AND DEPTH BEFORE COMPENSING PLANTING WORK.
 - ACTUAL AS-BUILT SITE CONDITIONS MAY VARY FROM THIS PLAN. PLANT AND MATERIAL QUANTITIES AS SHOWN ON THE PLAN ARE FOR UNIFORM COMPARISON AND ESTIMATE PURPOSES. NOTIFY ENGINEER OF ALL SITE CONDITIONS WHICH WILL AFFECT PLANT QUANTITIES REQUIRED AND/OR THEIR LOCATION.
 - ALL SHRUBS AND PLANTING BEDS SHALL HAVE DENSITY WEED BARRIER INSTALLED UNDER 3" MINIMUM PINE STRAIN PULCH. DO NOT PLACE WEED BARRIER IN GROUND COVER BEDS (I.E. LIRIOPE, DAYLILY AND ANNUAL BEDS).

REVISIONS/ISSUANCES

NO.	DATE	DESCRIPTION

GEORGIA
Professional Engineer Seal

CARTER
Engineering Group
8318 Peachtree Road, Suite 590
Atlanta, Georgia 30318
478-219-8899

STATE OF GEORGIA
Professional Engineer Seal

Manley Spangler Smith Architects
A Professional Corporation

528 East Taylor St.
P.O. Box 880
Giffin, Georgia 30224
Office: 770.227.5473
Fax: 770.228.3442

PROJECT: RENOVATIONS, MODIFICATIONS, & ADDITIONS TO HENRY COUNTY SCHOOLS - GROUP 10 WOODLAND HIGH SCHOOL (ITEM C)
CLIENT: HENRY COUNTY BOARD OF EDUCATION

SHEET TITLE: LANDSCAPE PLAN SECTOR 1

I.U.: 08
F.T.E.: 1982
FACILITY CODE: 0408
© 2014 Manley Spangler Smith Architects, PC
PROJECT NUMBER: 201312
DATE: 08/01/14
SCALE: 1"=20'
0" 20' 40'

DRAWN BY: AGM/MAR/LMM
CHECKED BY: DLG
SHEET NO.: L1.1