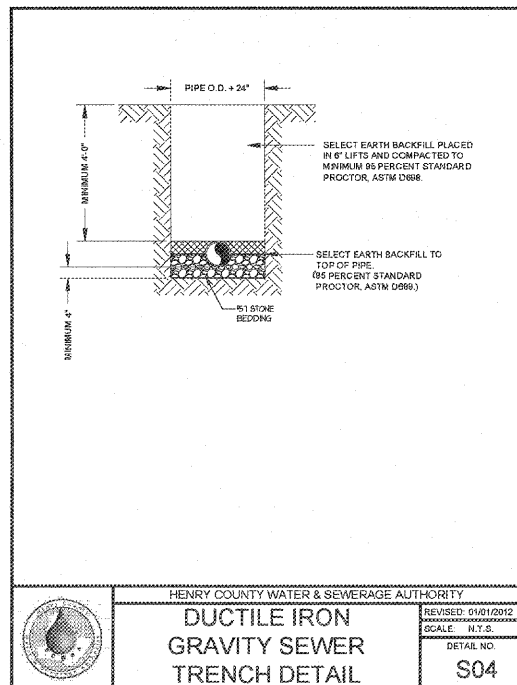
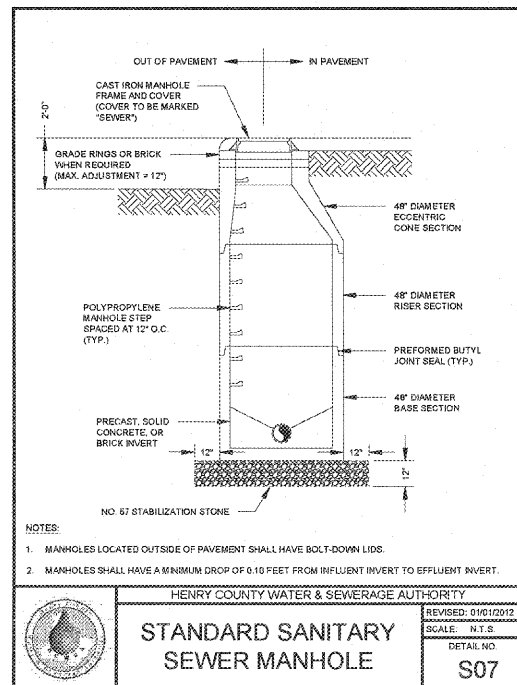


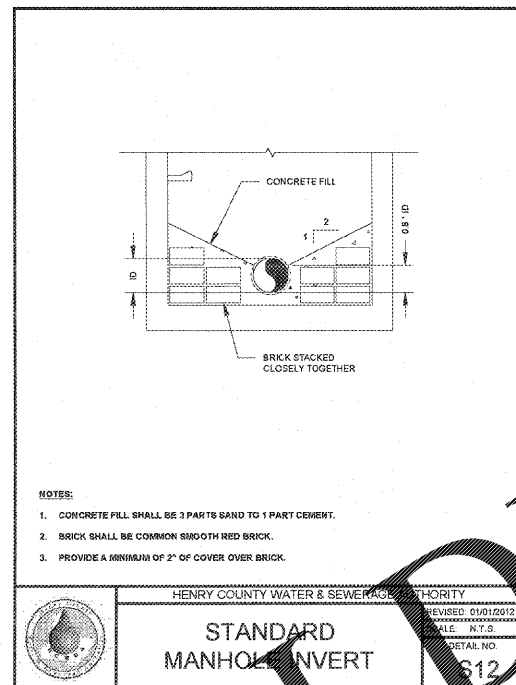
Order Plans



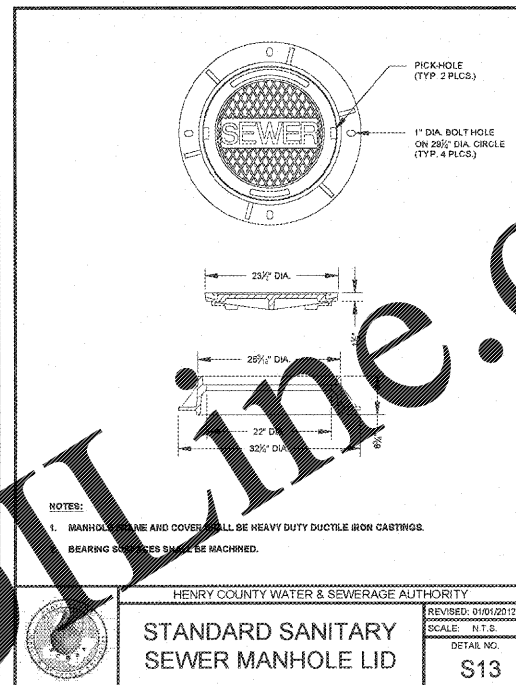
HENRY COUNTY WATER & SEWERAGE AUTHORITY  
**DUCTILE IRON GRAVITY SEWER TRENCH DETAIL**  
 REVISED: 01/01/2012  
 SCALE: N.T.S.  
 DETAIL NO. **S04**



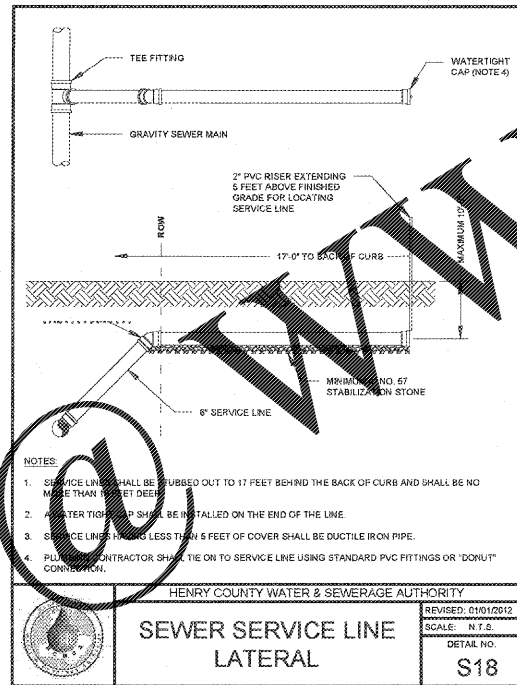
HENRY COUNTY WATER & SEWERAGE AUTHORITY  
**STANDARD SANITARY SEWER MANHOLE**  
 REVISED: 01/01/2012  
 SCALE: N.T.S.  
 DETAIL NO. **S07**



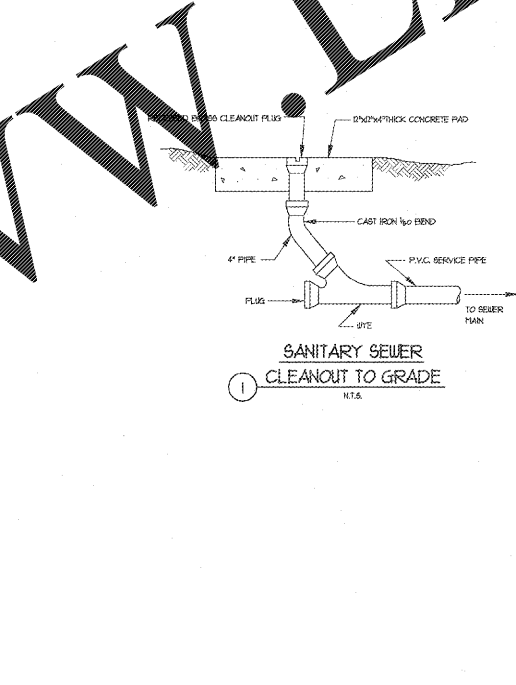
HENRY COUNTY WATER & SEWERAGE AUTHORITY  
**STANDARD MANHOLE INVERT**  
 REVISED: 01/01/2012  
 SCALE: N.T.S.  
 DETAIL NO. **S12**



HENRY COUNTY WATER & SEWERAGE AUTHORITY  
**STANDARD SANITARY SEWER MANHOLE LID**  
 REVISED: 01/01/2012  
 SCALE: N.T.S.  
 DETAIL NO. **S13**



HENRY COUNTY WATER & SEWERAGE AUTHORITY  
**SEWER SERVICE LINE LATERAL**  
 REVISED: 01/01/2012  
 SCALE: N.T.S.  
 DETAIL NO. **S18**



**SANITARY SEWER CLEANOUT TO GRADE**  
 N.T.S.

REVISIONS/ISSUANCES		
NO.	DATE	DESCRIPTION

**CARTER** Engineering Group  
 6310 Parkside Road, Suite 200  
 Marietta, GA 30129  
 478-216-2600

**Manley Spangler Smith Architects**  
 A Professional Corporation

525 East Taylor St.  
 P.O. Box 880  
 Griffin, Georgia 30224  
 Office 770.227.5473  
 Fax 770.228.3442

PROJECT: RENOVATIONS, MODIFICATIONS, & ADDITIONS TO HENRY COUNTY SCHOOLS - GROUP 10 WOODLAND HIGH SCHOOL (ITEM C)  
 CLIENT: HENRY COUNTY BOARD OF EDUCATION

SHEET TITLE: SITE SANITARY SEWER DETAILS

I.U.: 88  
 F.T.E.: 1602  
 FACILITY CODE: 0409  
 © 2019 Manley Spangler Smith Architects, PC  
 PROJECT NUMBER: 251731C  
 DATE: 08.07.19  
 SCALE: AS SHOWN

DRAWN BY: AGM/MAR/AMM  
 CHECKED BY: DLG  
 SHEET NO.: **C7.3**