

Order Plans

PIPE DIA. (IN)	CONC. DIA. (IN)	L (IN)	H (IN)	W (IN)	CONC. VOLUME (CY)	THRUST (LBS)
4	8.41	24.0	12.0	6.11	0.28	4,573
6	10.41	36.0	18.0	9.16	0.63	10,113
8	12.41	48.0	24.0	12.21	1.12	17,773
10	14.41	60.0	30.0	15.26	1.75	27,773
12	16.41	72.0	36.0	18.31	2.50	39,773

**NOTES:**

- THRUST BLOCK DIMENSIONS ARE BASED ON THE FOLLOWING DESIGN CRITERIA:  
WORKING PRESSURE = 150 PSF  
SOIL BEARING CAPACITY = 1,000 PSF  
SAFETY FACTOR = 1.5  
THESE ARE THE MINIMUM DESIGN CRITERIA. IF ACTUAL WORKING PRESSURE IS GREATER THAN 150 PSF OR IF ACTUAL SOIL BEARING CAPACITY IS LESS THAN 1,000 PSF, DIMENSIONS SHALL BE RECALCULATED.
- THRUST BLOCK CONCRETE SHALL HAVE A MINIMUM 28 DAY COMPRESSIVE STRENGTH OF 2,500 PSI.
- THRUST BLOCK SHALL BEAR AGAINST UNDISTURBED SOIL.
- A MINIMUM 10 MIL PLASTIC SHEET SHALL BE PLACED BETWEEN CONCRETE AND PIPE.
- ALL BOLTS SHALL REMAIN ACCESSIBLE. DO NOT COVER WITH CONCRETE.

HENRY COUNTY WATER & SEWERAGE AUTHORITY  
REVISION: 01/07/2012  
SCALE: N.T.S.  
DETAIL NO. S24

PIPE DIA. (IN)	CONC. DIA. (IN)	L (IN)	H (IN)	W (IN)	CONC. VOLUME (CY)	THRUST (LBS)
4	8.41	24.0	12.0	6.11	0.28	4,573
6	10.41	36.0	18.0	9.16	0.63	10,113
8	12.41	48.0	24.0	12.21	1.12	17,773
10	14.41	60.0	30.0	15.26	1.75	27,773
12	16.41	72.0	36.0	18.31	2.50	39,773

**NOTES:**

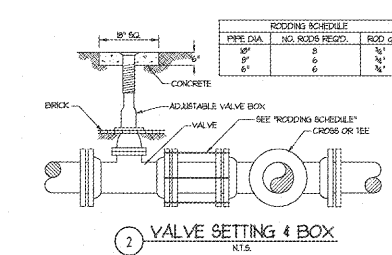
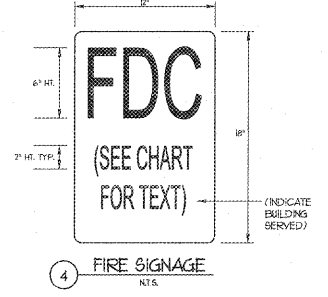
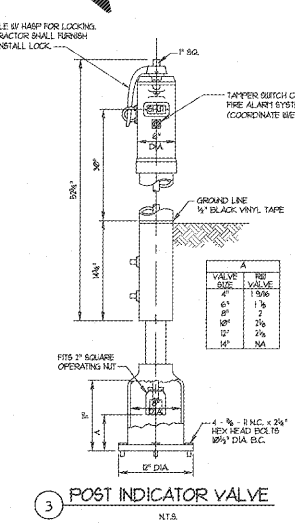
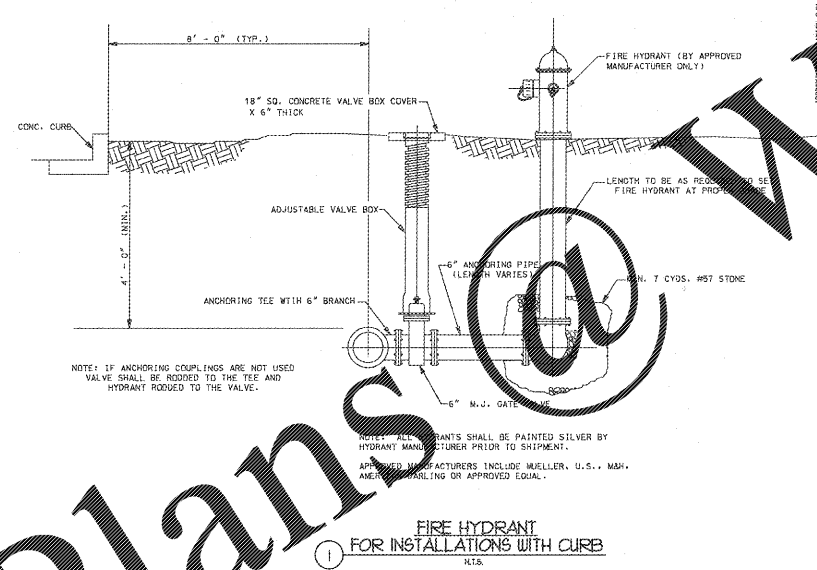
- DEADMAN DIMENSIONS ARE BASED ON THE FOLLOWING DESIGN CRITERIA:  
WORKING PRESSURE = 150 PSF  
SOIL BEARING CAPACITY = 1,000 PSF  
SAFETY FACTOR = 1.5  
THESE ARE THE MINIMUM DESIGN CRITERIA. IF ACTUAL WORKING PRESSURE IS GREATER THAN 150 PSF OR IF ACTUAL SOIL BEARING CAPACITY IS LESS THAN 1,000 PSF, DIMENSIONS SHALL BE RECALCULATED.
- DEADMAN CONCRETE SHALL HAVE A MINIMUM 28 DAY COMPRESSIVE STRENGTH OF 2,500 PSI.
- DEADMAN SHALL BEAR AGAINST UNDISTURBED SOIL.
- A MINIMUM 10 MIL PLASTIC SHEET SHALL BE PLACED BETWEEN CONCRETE AND PIPE.
- ALL BOLTS SHALL REMAIN ACCESSIBLE. DO NOT COVER WITH CONCRETE.

HENRY COUNTY WATER & SEWERAGE AUTHORITY  
REVISION: 01/07/2012  
SCALE: N.T.S.  
DETAIL NO. S25

**NOTES:**

- RESTRAINED JOINT DIMENSIONS SHALL BE CALCULATED BY THE DESIGN ENGINEER. CALCULATIONS SHALL BE SUBMITTED TO THE OWNER.
- THE TIE ROD SHALL BE MINIMUM TYPE 304 STAINLESS STEEL AND SHALL HAVE A MINIMUM YIELD STRENGTH OF 50,000 PSI.

HENRY COUNTY WATER & SEWERAGE AUTHORITY  
REVISION: 01/07/2012  
SCALE: N.T.S.  
DETAIL NO. S26



**SIGN SCHEDULE**

- A. FOR MAIN FDC LOCATED NEAR KITCHEN SERVICE AREA TEXT SHALL READ "SERVES MAIN BUILDING"
- B. FOR MULTIPURPOSE BLDG. LOCATED TO NORTH OF MAIN BUILDING, TEXT SHALL READ "SERVES MULTIPURPOSE BLDG"



REVISIONS/ISSUANCES

NO.	DATE	DESCRIPTION

GEORGIA 811  
Call before you dig

CARTER Engineering Group  
6750 Poole Road, Suite 100  
Roswell, GA 30120  
478-219-2800

LEVEL CERTIFIED DESIGN PROFESSIONAL ENGINEER  
ISSUED: 11/20/07 EXP: 11/20/10

STATE OF GEORGIA REGISTERED ARCHITECT

Manley Spangler Smith Architects  
A Professional Corporation

525 East Taylor St  
P.O. Box 880  
Gresham, Georgia 30224  
Office 770.227.5473  
Fax 770.228.3442

PROJECT: RENOVATIONS, MODIFICATIONS, & ADDITIONS TO HENRY COUNTY SCHOOLS - GROUP 10 WOODLAND HIGH SCHOOL (ITEM C)  
CLIENT: HENRY COUNTY BOARD OF EDUCATION

SHEET TITLE: SITE WATER DETAILS

1.U.: 86  
P.T.E.: 1862  
FACILITY CODE: 0438  
© 2013 Manley Spangler Smith Architects, PC  
PROJECT NUMBER: 201313C  
DATE: 05.07.13  
SCALE: AS SHOWN

DRAWN BY: AGM/AR/MWH  
CHECKED BY: DLG  
SHEET NO. C7.2