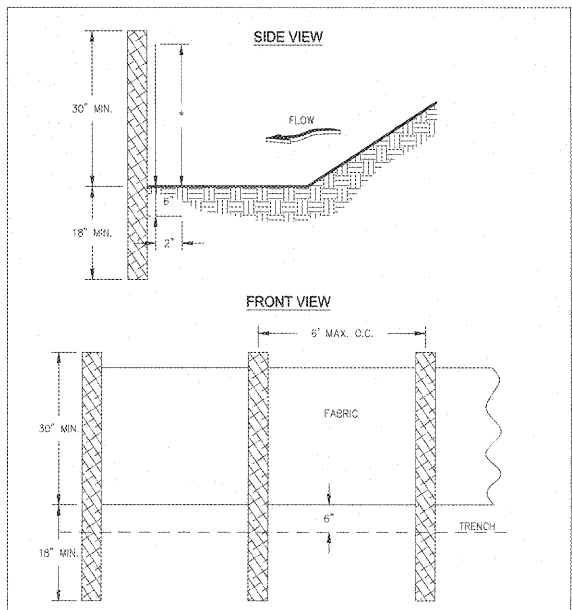


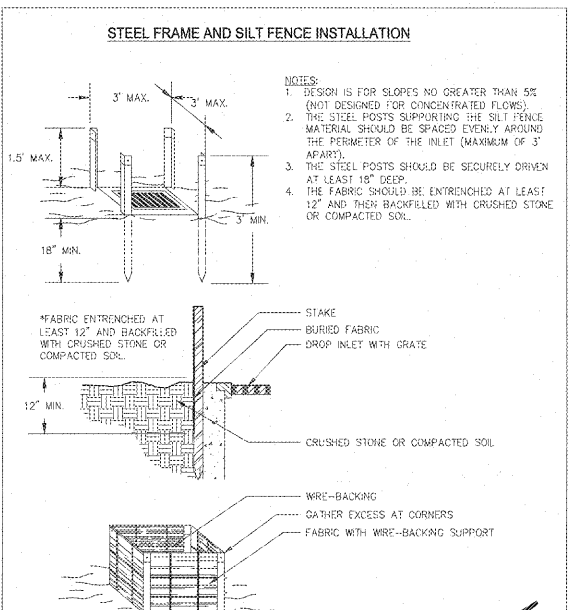
- NOTES:**
1. AVOID LOCATING ON STEEP SLOPES OR AT CURVES ON PUBLIC ROADS.
 2. REMOVE ALL VEGETATION AND OTHER UNSUITABLE MATERIAL FROM THE FOUNDATION AREA, GRADE, AND CROWN FOR POSITIVE DRAINAGE.
 3. AGGREGATE SIZE SHALL BE IN ACCORDANCE WITH NATIONAL STONE ASSOCIATION R-2 (1.5"-3.5" STONE).
 4. GRAVEL PAD SHALL HAVE A MINIMUM THICKNESS OF 6".
 5. PAD WIDTH SHALL BE EQUAL FUEL WIDTH AT ALL POINTS OF VEHICULAR EGRESS, BUT NO LESS THAN 20'.
 6. A DIVERSION ROOF SHOULD BE CONSTRUCTED WHEN GRADE TOWARD PAVED AREA IS GREATER THAN 2%.
 7. INSTALL PIPE UNDER THE ENTRANCE IF NEEDED TO MAINTAIN DRAINAGE DITCHES.
 8. WHEN WASHING IS REQUIRED, IT SHOULD BE DONE ON AN AREA STABILIZED WITH CRUSHED STONE THAT DRAINS INTO AN APPROVED SEDIMENT TRAP OR SEDIMENT BASIN (OVERT ALL SURFACED RUMPLED AND DRAINAGE FROM THE ENTRANCE TO A SEDIMENT CONTROL DEVICE).
 9. WASHRACKS AND/OR TIRE WASHERS MAY BE REQUIRED DEPENDING ON SCALE AND CIRCUMSTANCE. IF NECESSARY, WASHRACK DESIGN MAY CONSIST OF ANY MATERIAL SUITABLE FOR TRUCK TRAFFIC THAT REMOVE MUD AND DIRT.
 10. MAINTAIN AREA IN A WAY THAT PREVENTS TRACKING AND/OR FLOW OF MUD ONTO PUBLIC RIGHTS-OF-WAYS. THIS MAY REQUIRE TOP DRESSING, REPAIR AND/OR CLEANUP OF ANY MEASURES USED TO TRAP SEDIMENT.

1 Co CONSTRUCTION EXIT
N.T.S.



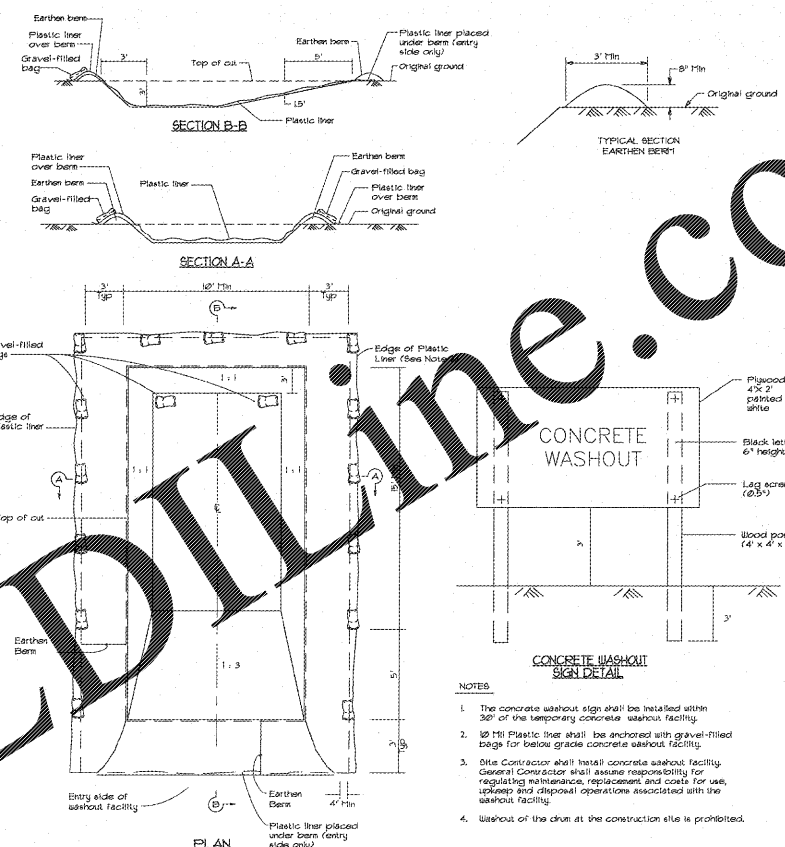
- NOTES:**
1. USE STEEL OR WOOD POSTS OR AS SPECIFIED BY THE EROSION, SEDIMENTATION, AND POLLUTION CONTROL PLAN.
 2. HEIGHT (H) IS TO BE SHOWN ON THE EROSION, SEDIMENTATION, AND POLLUTION CONTROL PLAN.

4 Sd1-NS SILT FENCE-TYPE NON-SENSITIVE
N.T.S.



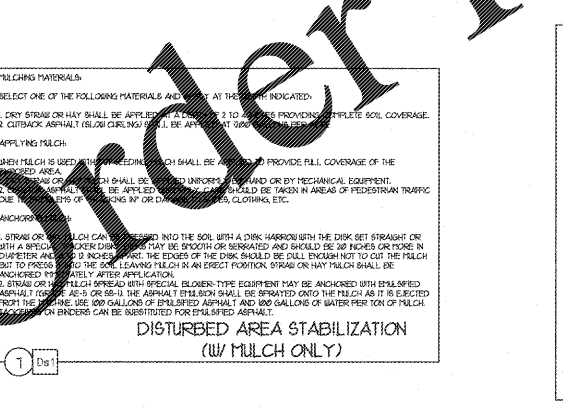
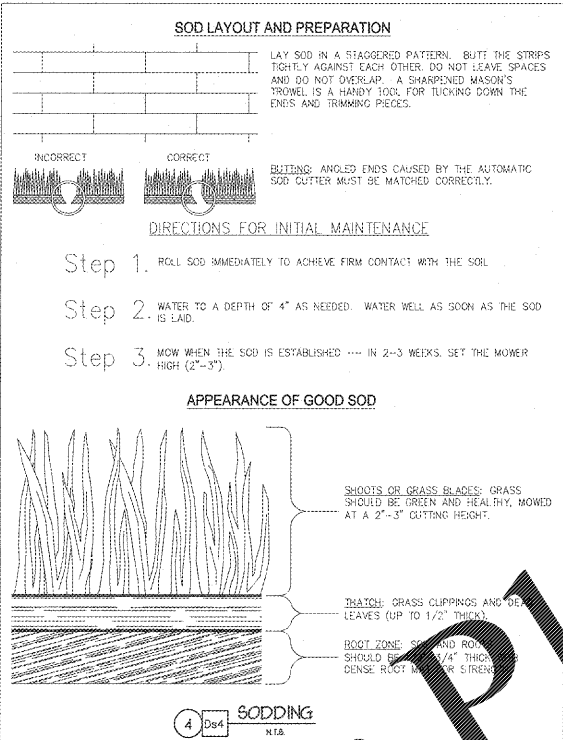
- NOTES:**
1. DESIGN IS FOR SLOPES NO GREATER THAN 5% (NOT DESIGNED FOR CONCENTRATED FLOWS).
 2. THE STEEL POSTS SUPPORTING THE SILT FENCE MATERIAL SHOULD BE SPACED EVENLY AROUND THE PERIMETER OF THE INLET (MAXIMUM OF 3' APART).
 3. THE STEEL POSTS SHOULD BE SECURELY DRIVEN AT LEAST 18" DEEP.
 4. THE FABRIC SHOULD BE ENTRENCHED AT LEAST 12" AND THEN BACKFILLED WITH CRUSHED STONE OR COMPACTED SOIL.

3 Sd2-F INLET SEDIMENT TRAP
FILTER FABRIC W/ SUPPORTING FRAME
N.T.S.

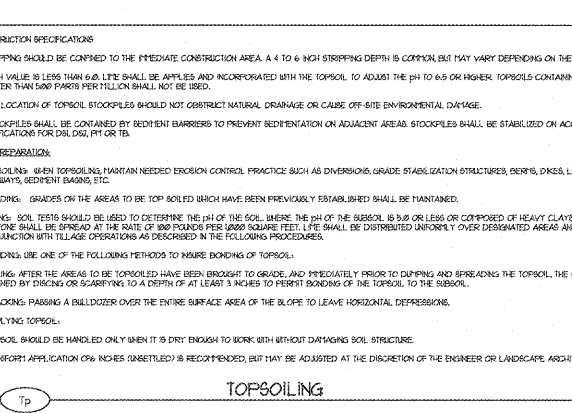
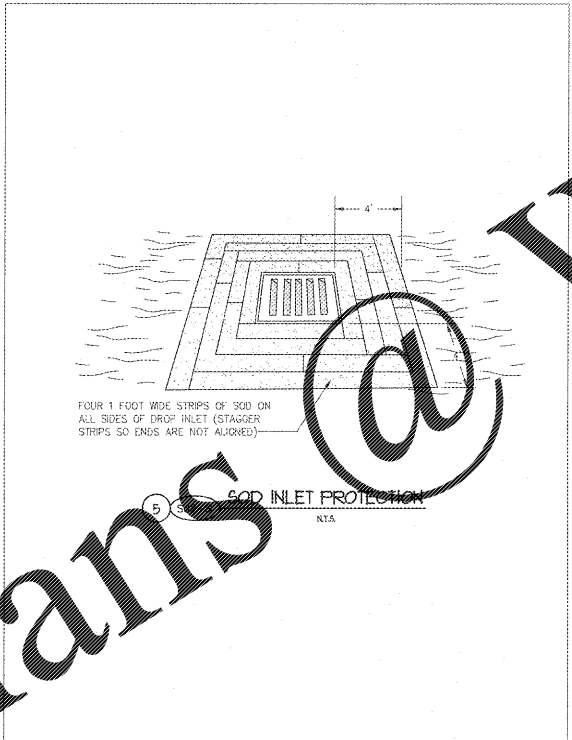


- NOTES:**
1. The concrete washout sign shall be installed within 30' of the temporary concrete washout facility.
 2. 15% Plastic liner shall be anchored with gravel-filled bags for below grade concrete washout facility.
 3. Once Contractor shall install concrete washout facility. General Contractor shall assume responsibility for regular maintenance, replacement and care for use, upkeep and disposal operations associated with the washout facility.
 4. Washout of the drum at the construction site is prohibited.

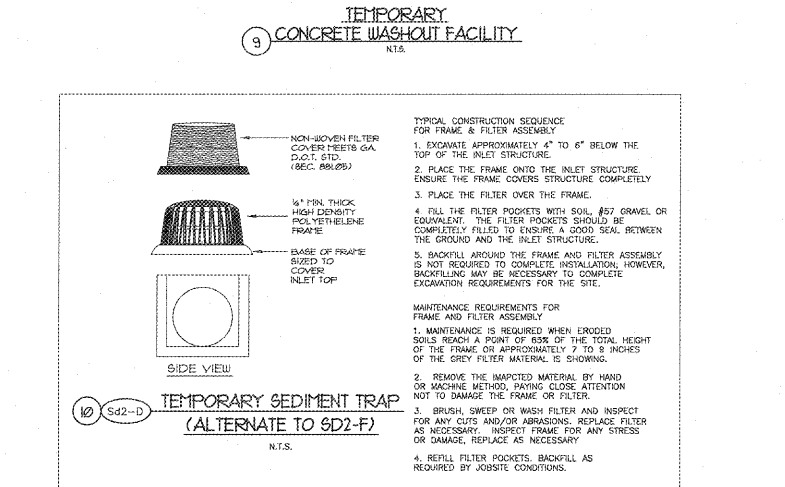
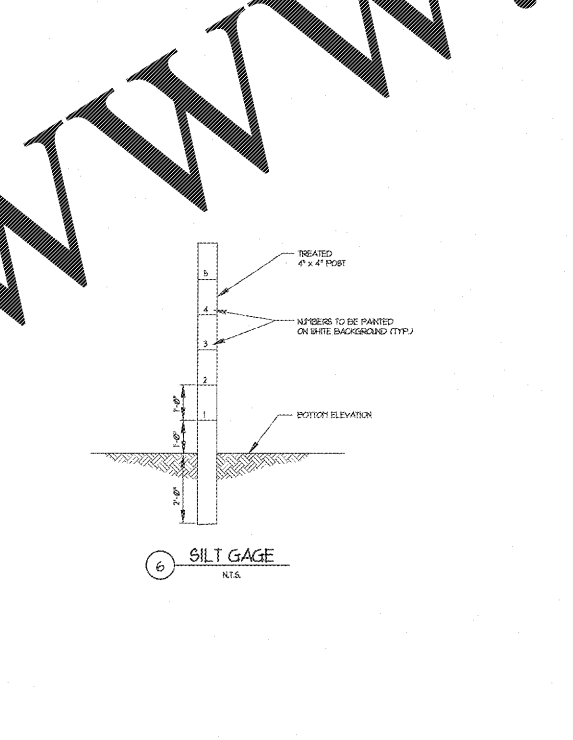
9 CONCRETE WASHOUT FACILITY
N.T.S.



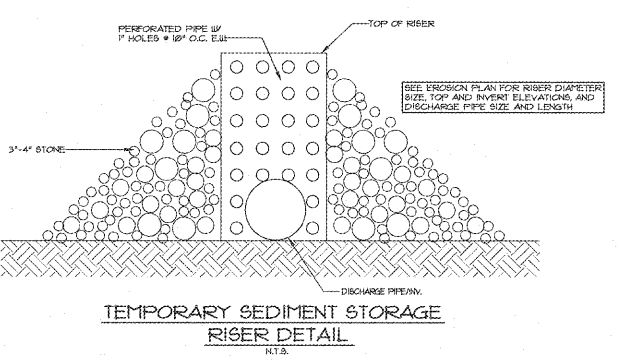
1 Ds1 DISTURBED AREA STABILIZATION
(W/ MULCH ONLY)
N.T.S.



8 Tp TOPSOILING
N.T.S.



10 Sd2-D TEMPORARY SEDIMENT TRAP
(ALTERNATE TO Sd2-F)
N.T.S.



TEMPORARY SEDIMENT STORAGE
RISER DETAIL
N.T.S.

REVISIONS/ISSUANCES		
NO.	DATE	DESCRIPTION

GEORGIA 811
Call before you dig.

CARTER Engineering Group
6316 Peach Road, Suite 209
Marietta, GA 30150
478-216-2555

STATE OF GEORGIA REGISTERED ARCHITECT
LEVEL CERTIFIED
DR. PROFESSIONAL 2-2961
ISS. 6/11/2017, EXPIRES 11/2020

Manley Spangler Smith Architects
A Professional Corporation

535 East Taylor St.
P.O. Box 880
Griffin, Georgia 30224
Office 770.227.5473
Fax 770.228.3442

PROJECT:
RENOVATIONS, MODIFICATIONS, & ADDITIONS TO HENRY COUNTY SCHOOLS - GROUP 10 WOODLAND HIGH SCHOOL (ITEM C)

CLIENT:
HENRY COUNTY BOARD OF EDUCATION

SHEET TITLE:
STORMWATER POLLUTION PREVENTION DETAILS

LU: 80
F.T.E.: 1662
FACILITY CODE: 0608
© 2018 Manley Spangler Smith Architects, PC
PROJECT NUMBER: 201731C
DATE: 06.07.18
SCALE: AS SHOWN

DRAWN BY: AGM/MAR/AMH
CHECKED BY: D.L.C.
SHEET NO.: C6.6