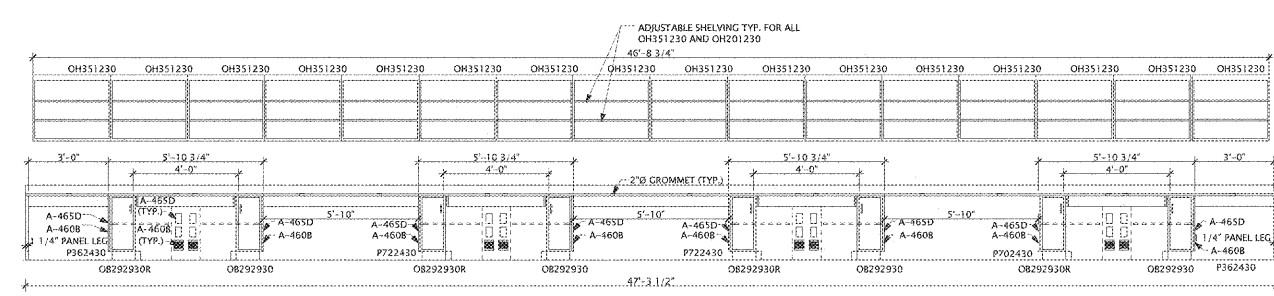
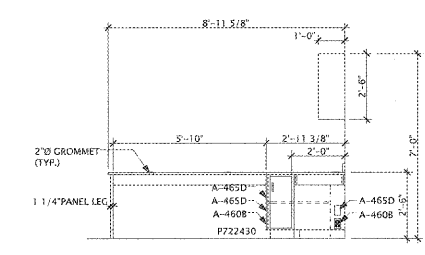


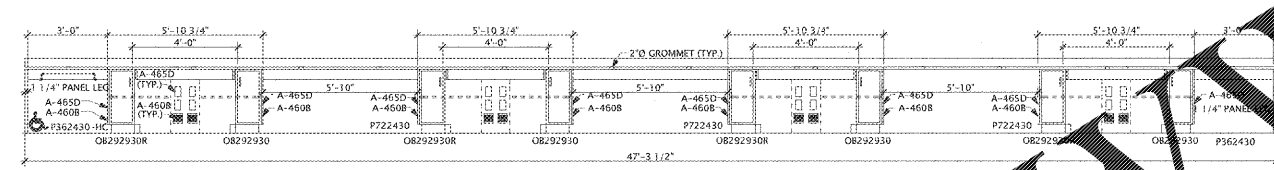
REVISIONS/ISSUANCES		
NO.	DATE	DESCRIPTION



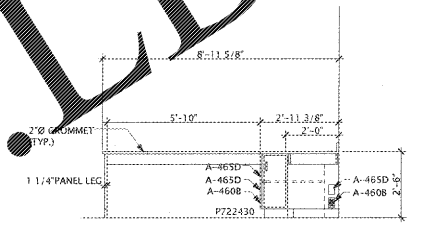
1 ELEVATION  
SCALE: 3/8" = 1'-0"



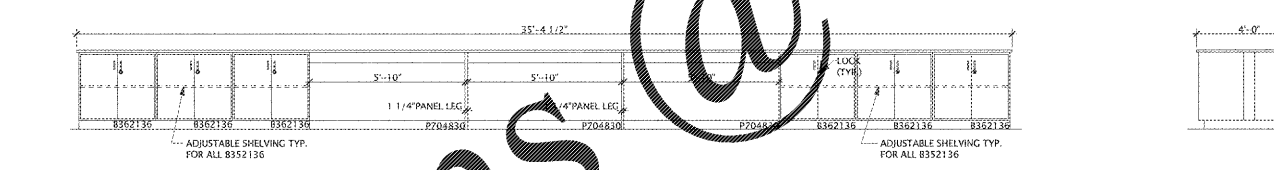
2 ELEVATION  
SCALE: 3/8" = 1'-0"



3 ELEVATION  
SCALE: 3/8" = 1'-0"

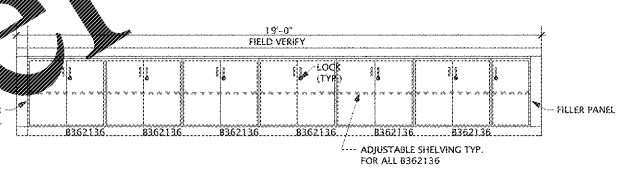


4 ELEVATION  
SCALE: 3/8" = 1'-0"

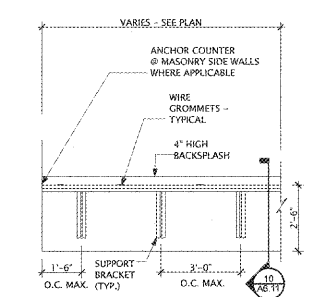


5 ELEVATION  
SCALE: 3/8" = 1'-0"

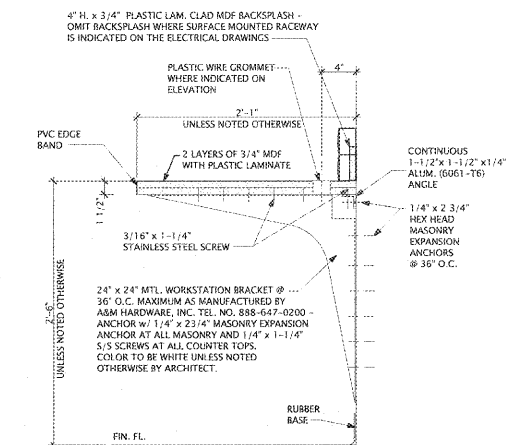
6 ELEVATION  
SCALE: 3/8" = 1'-0"



7 ELEVATION  
SCALE: 3/8" = 1'-0"



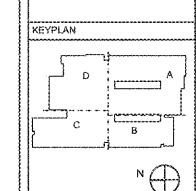
9 ELEVATION  
SCALE: 3/8" = 1'-0"



10 DETAIL  
SCALE: 1/2\"/>

- GENERAL CASEWORK NOTES**
1. ALL MODEL NUMBERS ARE BASED ON LEONARD PETERSON CO.
  2. CONTRACTOR SHALL FIELD VERIFY ALL DIMENSIONS PRIOR TO FABRICATION.
  3. COORDINATE WITH ELECTRICAL FOR ALL OUTLETS THAT WILL REQUIRE CUTOUTS FOR ACCESS.
  4. COUNTERTOPS ARE PLASTIC LAMINATE IN THE EXPLORATIONS IN TECHNOLOGY LAB.

- GENERAL MILLWORK NOTES**
1. FIELD VERIFY ALL CABINET & SHELF DIMENSIONS THAT MUST OCCUPY FIXED CONDITIONS.
  2. CONTRACTOR SHALL BE RESPONSIBLE FOR FABRICATING MILLWORK SECTIONALLY TO ALLOW ENTRY INTO ROOMS.
  3. PROVIDE WOOD CLOSURES AT ALL INTERIOR CORNERS, AT TOPS OF CABINETS AND SHELVES.
  4. REFER TO SPECIFICATIONS FOR WOOD SPECIES, FINISHES, COVERINGS FOR ALL DOORS, SHELVES, DIVIDERS, DRAWERS, AND CABINETS.



**Manley Spangler Smith Architects**  
A Professional Corporation

525 East Taylor St.  
P.O. Box 880  
Gwin, Georgia 30224  
Office 770.227.5473  
Fax 770.228.3442

PROJECT:  
**RENOVATIONS, MODIFICATIONS, & ADDITIONS TO HENRY COUNTY SCHOOLS - GROUP 18 WOODLAND MIDDLE SCHOOL (ITEM B)**

CLIENT:  
**HENRY COUNTY BOARD OF EDUCATION**

SHEET TITLE:  
**CASEWORK & MILLWORK ELEVATIONS & DETAILS**

DATE: 08.03.18  
SCALE: AS NOTED  
DRAWN BY: JB  
CHECKED BY: RV

SHEET NO.: **A6.11**

Order Plans @ WWW.LDILine.com