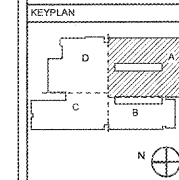


REVISIONS/ISSUANCES		
NO.	DATE	DESCRIPTION



Manley Spangler Smith Architects
A Professional Corporation

325 East Taylor St.
P.O. Box 880
Gwin, Georgia 30224
Office: 770.227.5473
Fax: 770.228.3462

PROJECT:
RENOVATIONS,
MODIFICATIONS, &
ADDITIONS TO HENRY
COUNTY SCHOOLS -
GROUP 10
WOODLAND MIDDLE
SCHOOL (ITEM B)

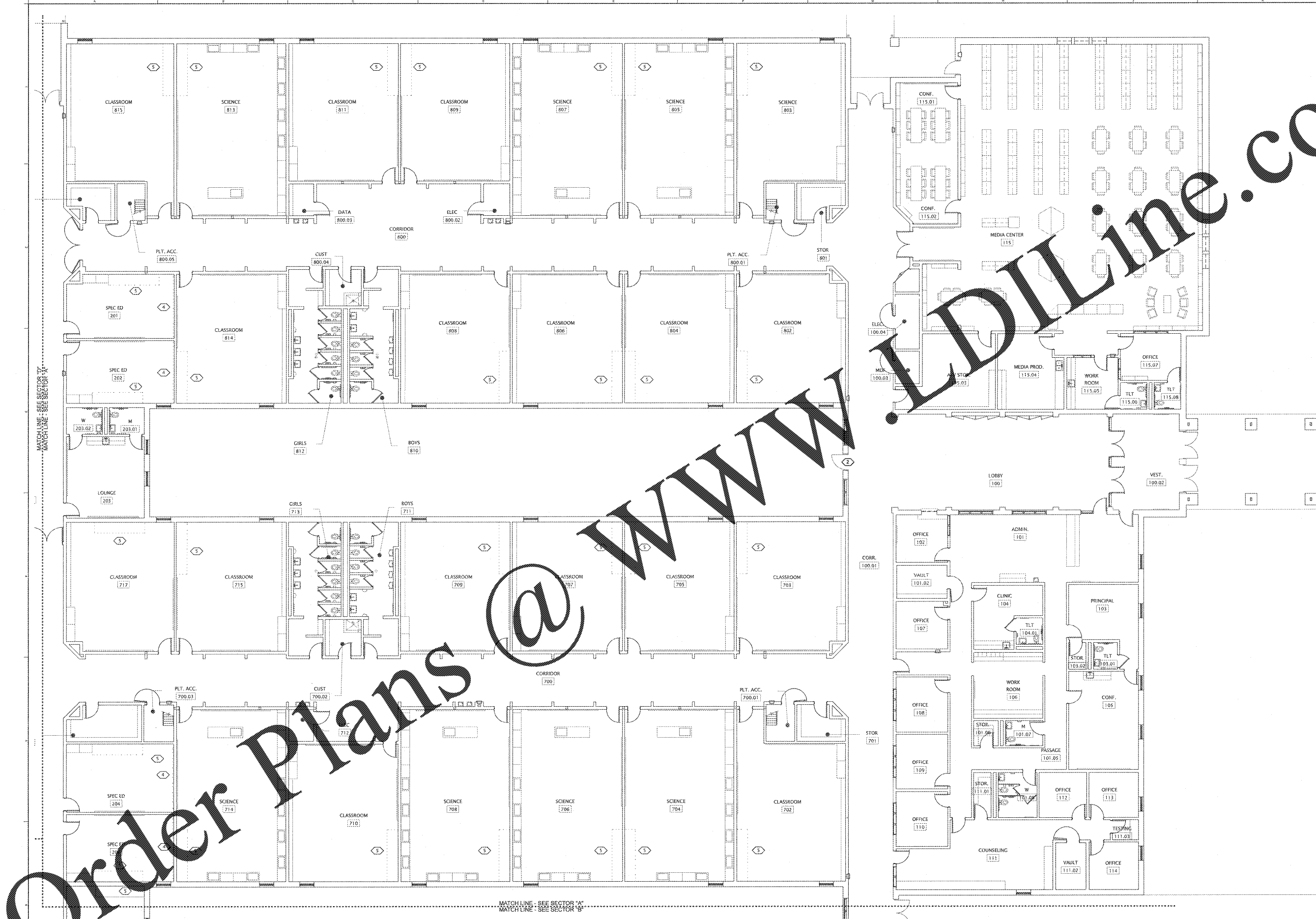
CLIENT:
HENRY COUNTY BOARD
OF EDUCATION

SHEET TITLE:
DEMOLITION PLAN -
SECTOR "A"

LU : 55
FTE : 867
FACILITY CODE: 675-0030
© 2015 Manley Spangler Smith Architects, PC

PROJECT NUMBER: 2017118
DATE: 06.07.15
SCALE: AS NOTED
DRAWN BY: JS
CHECKED BY: RV

SHEET NO.: **D1.21**



Order Plans @ WWW.LDILine.com

WWW.LDILine.com

DEMOLITION PLAN - SECTOR "A"
SCALE: 1/8" = 1'-0"

DEMOLITION PLAN LEGEND	
	EXISTING CONSTRUCTION TO REMAIN
	EXISTING CONSTRUCTION TO BE DEMOLISHED

SEE SHEET D1.22 FOR DEMOLITION GENERAL NOTES AND PLAN KEY NOTES