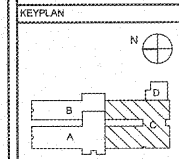


REVISIONS/ISSUANCES		
NO.	DATE	DESCRIPTION



AH&P
CONSULTING ENGINEERS
ANDREWS, HAMMOCK & POWELL, INC.
Suite 100
MACON, GEORGIA 31210
MACON (478) 405-8301
FAX (478) 405-8210
WWW.AHPENGR.COM



Manley Spangler Smith Architects
A Professional Corporation

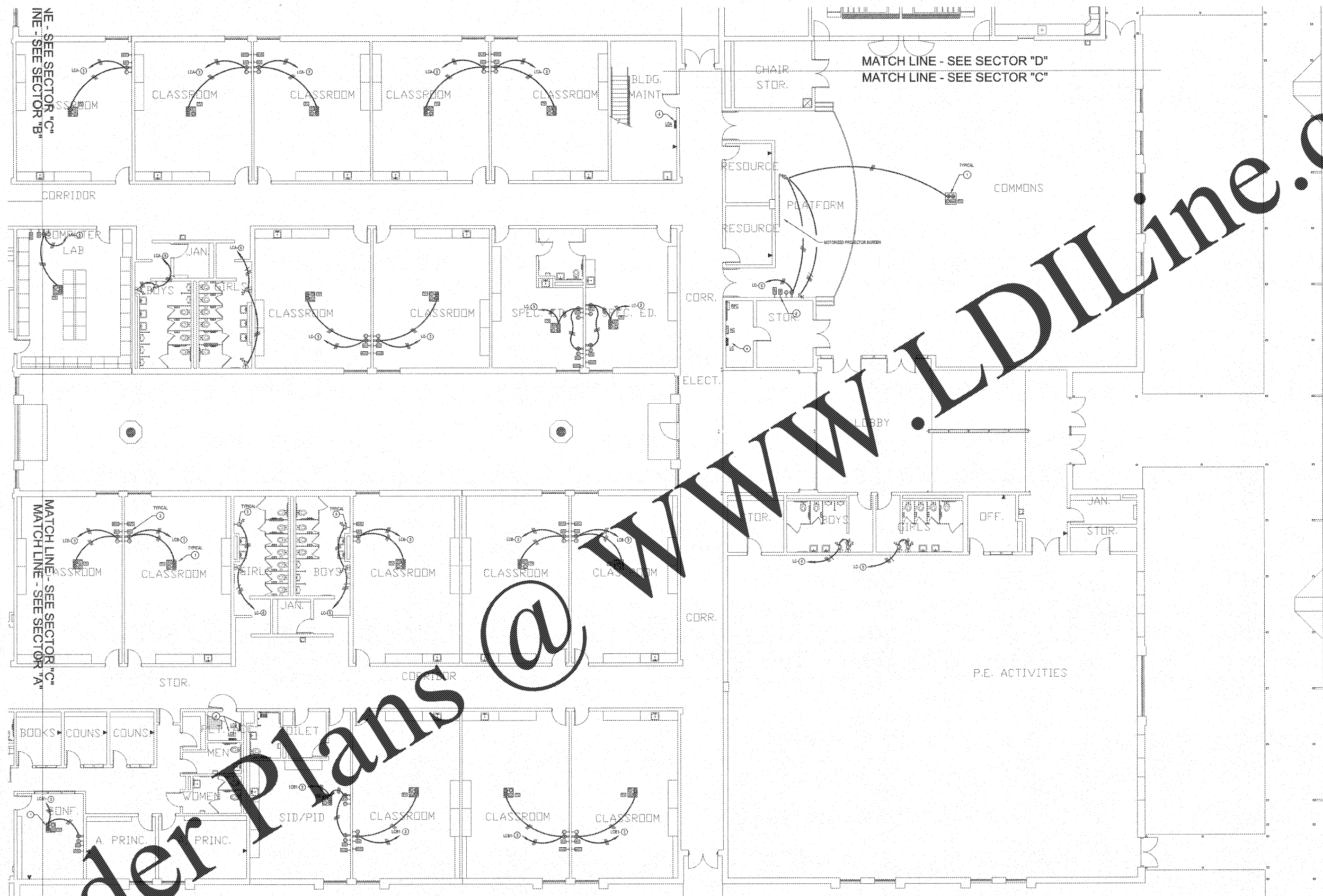
525 East Taylor St.
P.O. Box 880
Giffin, Georgia 30224
Office 770.227.5473
Fax 770.228.3442

PROJECT:
RENOVATIONS,
MODIFICATIONS, &
ADDITIONS TO HENRY
COUNTY SCHOOLS -
GROUP 10
WOODLAND ELEMENTARY
SCHOOL (ITEM A)

CLIENT:
HENRY COUNTY
BOARD OF EDUCATION

SHEET TITLE:
ELECTRICAL NEW WORK
POWER PLAN - SECTOR
"C"

L1: 55
F.T.E.: 875
FACILITY CODE: 675-0102
© 2018 Manley Spangler Smith Architects, PC
PROJECT NUMBER: 201731A
DATE: 06.07.18
SCALE: 1/8"=1'-0"
DRAWN BY: AUS
CHECKED BY: NHO
SHEET NO.: E203



GENERAL NOTES

1. PROVIDE ALL NEW CIRCUIT BREAKERS, PANELS, AND CONDUIT SYSTEMS. ALL NEW DEVICES AND COVER PLATES AS SPECIFIED. MAKE SURE ALL NEW DEVICES ARE INSTALLED IN ACCORDANCE WITH THE NATIONAL ELECTRICAL CODE (NEC) AND ALL APPLICABLE LOCAL CODES.
2. WHERE ORIGINALLY PROVIDED BY THE OWNER, THE CONTRACTOR SHALL VERIFY THE CONTINUITY OF THE GROUNDING PATH. IF THE GROUNDING PATH IS DISCONTINUED, THE CONTRACTOR SHALL REPAIR IT BY PROVIDING #12 GROUNDING CONDUCTOR IN EXISTING CONDUIT BACK TO PANEL.
3. ELECTRICAL INSTALLATIONS ON EXISTING WALLS SHALL HAVE DEVICES INSTALLED TO BE SET WITHIN MASONRY. CONTRACTOR SHALL NOT UNDER ANY CIRCUMSTANCES CUT THROUGH EXISTING MASONRY TO INSTALL NEW DEVICES UNLESS 3/4" (MIN. VOLTAGE) BOXES SHALL BE CUT INTO EXISTING MASONRY WITH FLEXIBLE CONDUIT FISHED IN EXISTING WALL FROM ABOVE ACCESSIBLE CEILING.
4. LOW VOLTAGE SYSTEMS OUTLETS SHOWN FOR INSTALLATION COORDINATION PURPOSES ONLY. SEE APPLICABLE LOW VOLTAGE POWER PLAN FOR OTHER REQUIREMENTS.

NOTE TO CONTRACTOR CONCERNING PROJECT PHASING:

THE WORK SPECIFIED ON THE DRAWINGS AND SPECIFICATIONS ILLUSTRATES THE COMPLETED CONTRACTUAL REQUIREMENTS. THIS PROJECT IS PHASED IN MULTIPLE PHASES. THE AREA OF EACH PHASE IS DESCRIBED IN THE ARCHITECTURAL DOCUMENTS AND THE CONTRACTOR SHALL REVIEW THESE PHASING REQUIREMENTS. CONTRACTOR SHALL REVIEW THESE PHASING REQUIREMENTS TO DETERMINE THE SPECIFIC WORK REQUIRED BY THE CONTRACTOR TO PERFORM THE PROJECT IN PHASES. BUT CONTRACTOR SHALL PREPARE PHASING PLAN AND SUBMIT TO ARCHITECT/ENGINEER AND HENRY COUNTY MAINTENANCE DEPARTMENT PRIOR TO BEGINNING WORK.

ELECTRICAL NEW WORK POWER PLAN - SECTOR 'C'
SCALE: 1/8"=1'-0"

NOTES: (POWER PLAN ONLY)

1. PROVIDE OUTLETS IN METAL CEILING PANEL ENCLOSURE AS SPECIFIED WITH PROJECTION MOUNT. COORDINATE EXACT LOCATION WITH ARCHITECTURAL REFLECTED CEILING PLANE LIGHT FIXTURES, ELECTRICAL CEILING MOUNTED DEVICES AND WHITE BOARD.
2. PROVIDE AUDIO VISUAL CONNECTIVITY, PROJECTOR AND MOUNTING HARDWARE AS SPECIFIED AND SHOWN IN THE DETAIL.
3. CONTRACTOR SHALL ROUTE SPIN BRICK AT 1/2" C TO DESIGNATED PANEL. PROVIDE 20AMP BREAKER FOR EACH HOMERUN IN PANEL AND MAKE CONNECTIONS.
4. EXISTING BIMING: TYPE P1, 100/250V, 3/4" x 4 1/2" PANELBOARD.
5. COORDINATE EXACT LOCATION AND MOUNTING HEIGHT OF HAND DRIVER / BOX WITH ARCHITECTURAL PLAN.
6. CONTRACTOR SHALL ROUTE SPIN BRICK AT 1/2" C TO DESIGNATED PANEL. PROVIDE 20AMP BREAKER FOR EACH HOMERUN IN PANEL AND MAKE CONNECTIONS.