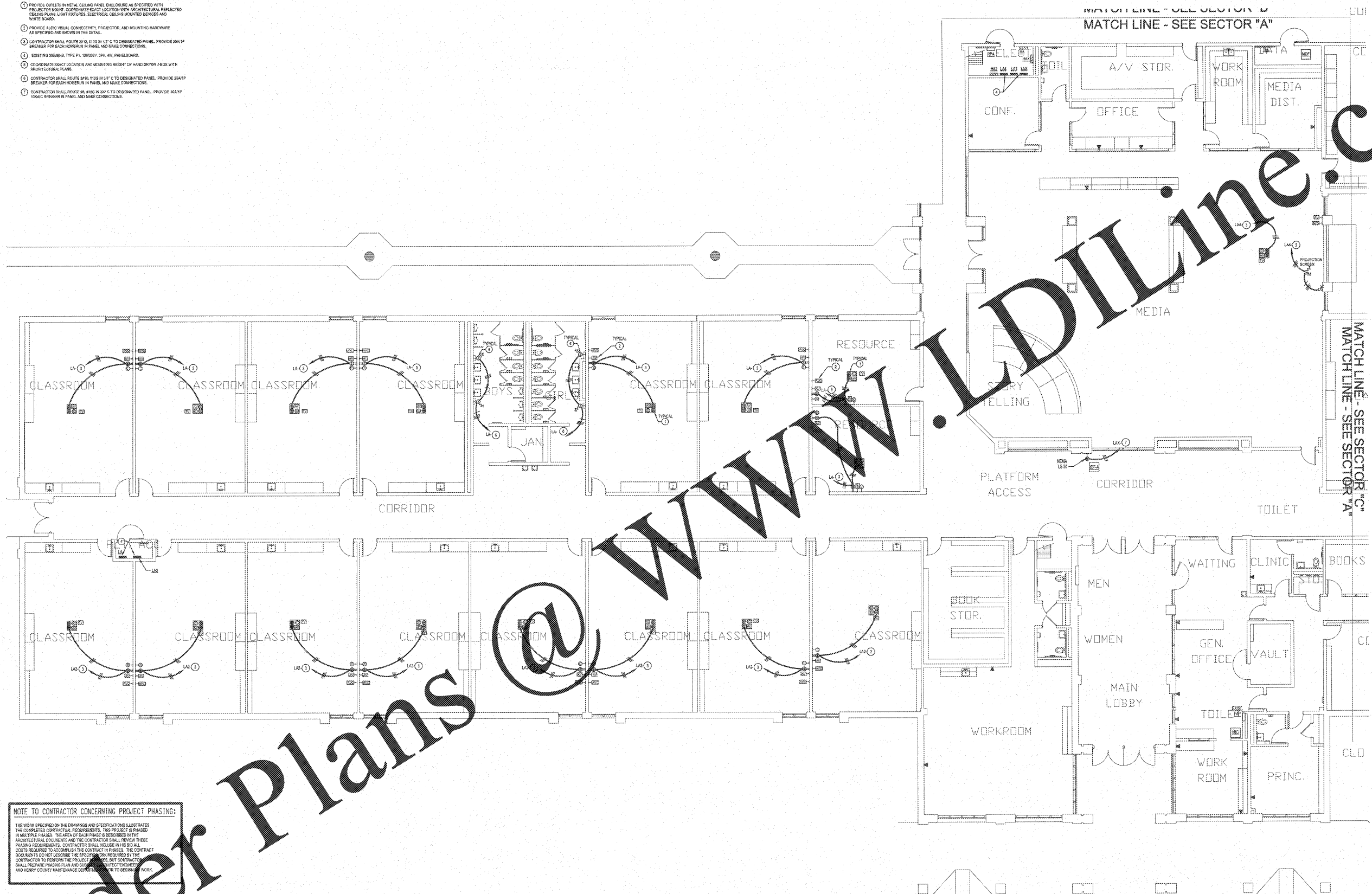
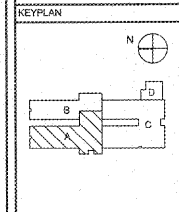


NOTES: (POWER PLAN ONLY)

- 1 PROVIDE OUTLETS IN METAL CEILING PANEL ENCLOSURE AS SPECIFIED WITH PROJECTOR MOUNT. COORDINATE EXACT LOCATION WITH ARCHITECTURAL REFLECTED CEILING PLANE LIGHT FIXTURES, ELECTRICAL CEILING MOUNTED DEVICES AND WHITE BOARD.
- 2 PROVIDE FLOOR WIRING, CONNECTIVITY, PROJECTOR, AND MOUNTING HARDWARE AS SPECIFIED AND SHOWN IN THE DETAIL.
- 3 CONTRACTOR SHALL ROUTE 24V, 48V, 120V, 208V, 240V TO DESIGNATED PANEL. PROVIDE 25AMP BREAKER FOR EACH HOVERBAR IN PANEL AND MAKE CONNECTIONS.
- 4 EXISTING BRUENEL TYPE P1, 12000BT, 3PH, 4K, PANELBOARD.
- 5 COORDINATE DUCT LOCATION AND MOUNTING HEIGHT OF HAND DRYER J-BOX WITH ARCHITECTURAL PLAN.
- 6 CONTRACTOR SHALL ROUTE 24V, 48V, 120V, 208V, 240V TO DESIGNATED PANEL. PROVIDE 25AMP BREAKER FOR EACH HOVERBAR IN PANEL AND MAKE CONNECTIONS.
- 7 CONTRACTOR SHALL ROUTE 48, 120V, 208V TO DESIGNATED PANEL. PROVIDE 25AMP BREAKER IN PANEL AND MAKE CONNECTIONS.



REVISIONS/ISSUANCES		
NO.	DATE	DESCRIPTION



AH&P
CONSULTING ENGINEERS
ANDREWS, HAMMOCK & POWELL, INC.
Suite 100
Macon, Georgia 31210
Macon (478) 405-8371
FAX (478) 405-8213
WWW.AHPENGR.COM



Manley Spangler Smith Architects
A Professional Corporation
625 East Taylor St.
P.O. Box 880
Gwin, Georgia 30224
Office 770.227.5473
Fax 770.228.3442

PROJECT:
RENOVATIONS,
MODIFICATIONS, &
ADDITIONS TO HENRY
COUNTY SCHOOLS -
GROUP 18
WOODLAND ELEMENTARY
SCHOOL (ITEM A)

CLIENT:
HENRY COUNTY
BOARD OF EDUCATION
SHEET TITLE:
ELECTRICAL NEW WORK
POWER PLAN - SECTOR
'A'

1/1 - 55
F.T.E. - 875
FACILITY CODE: 675-0108
© 2018 Manley Spangler Smith Architects, PC
PROJECT NUMBER: 201731A
DATE: 06.07.18
SCALE: 1/8"=1'-0"
DRAWN BY: AJG
CHECKED BY: NHO
SHEET NO.: E201

NOTE TO CONTRACTOR CONCERNING PROJECT PHASING:
THE WORK SPECIFIED ON THE DRAWINGS AND SPECIFICATIONS ILLUSTRATES THE COMPLETED CONTRACTUAL REQUIREMENTS. THIS PROJECT IS PHASED IN MULTIPLE PHASES. THE AREA OF EACH PHASE IS DESCRIBED IN THE ARCHITECTURAL DOCUMENTS AND THE CONTRACTOR SHALL REVIEW THESE PHASING REQUIREMENTS. CONTRACTOR SHALL INCLUDE AN HD SD ALL CODES REQUIRED TO ACCOMPLISH THE CONTRACT PHASING. THE CONTRACT DOCUMENTS DO NOT DESCRIBE THE RECOMMENDATIONS REQUIRED BY THE CONTRACTOR TO PHASE THE PROJECT. CONTRACTOR SHALL COORDINATE WITH ARCHITECT AND HENRY COUNTY MAINTENANCE DEPARTMENT TO DETERMINE WORK.

GENERAL NOTES
1. ALL ELECTRICAL WORK SHALL BE IN ACCORDANCE WITH THE NATIONAL ELECTRICAL CODE (NEC) AND ALL APPLICABLE LOCAL CODES.
2. ALL ELECTRICAL WORK SHALL BE INSTALLED IN ACCORDANCE WITH THE NATIONAL ELECTRICAL CODE (NEC) AND ALL APPLICABLE LOCAL CODES.
3. ALL ELECTRICAL WORK SHALL BE INSTALLED IN ACCORDANCE WITH THE NATIONAL ELECTRICAL CODE (NEC) AND ALL APPLICABLE LOCAL CODES.
4. ALL ELECTRICAL WORK SHALL BE INSTALLED IN ACCORDANCE WITH THE NATIONAL ELECTRICAL CODE (NEC) AND ALL APPLICABLE LOCAL CODES.

ELECTRICAL NEW WORK POWER PLAN - SECTOR 'A'
SCALE: 1/8"=1'-0"

Order Plans @ WWW.LDILine.com