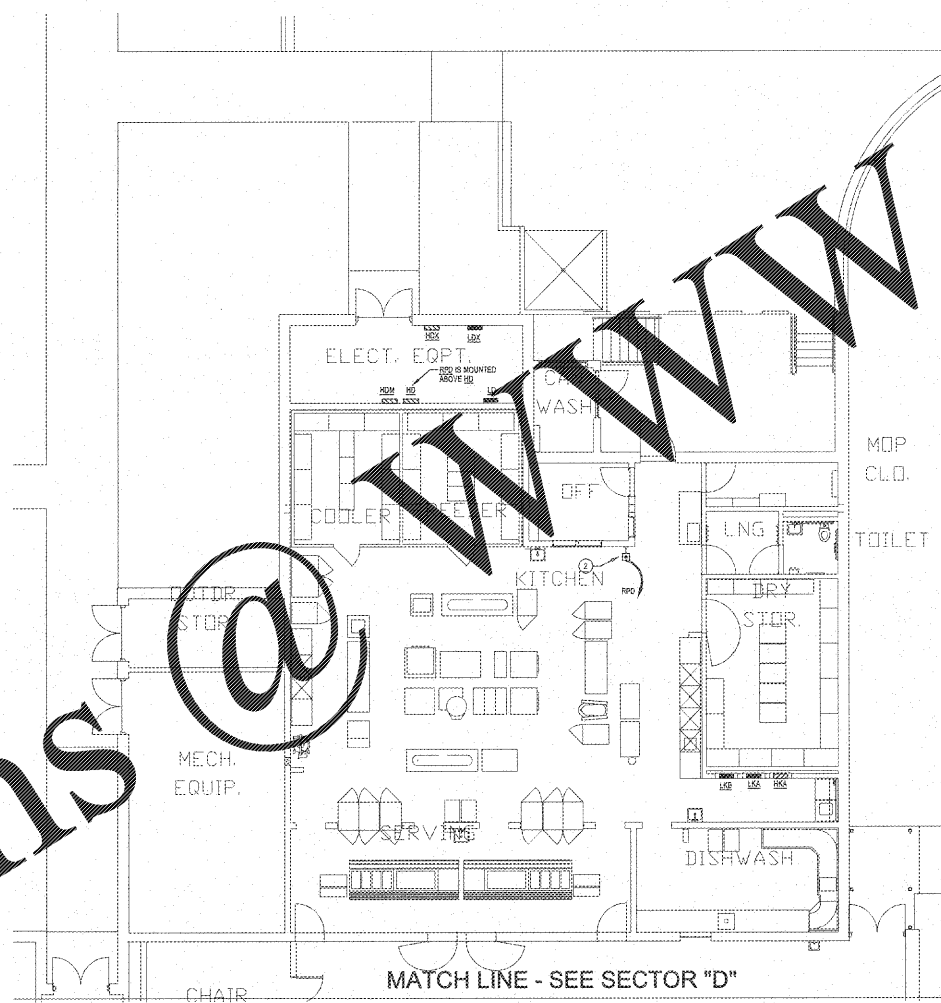


Order Plans @

WWW.LDILine.com



NOTES: (THIS SHEET ONLY)

- ① GENERAL: ALL EMERGENCY EGRESS LIGHT FIXTURES, ELCU NORMAL POWER SENSING CIRCUIT, AND EXIT SIGNS SHALL BE UNSWITCHED.
- ② INSTALL LIGHTING CONTROL SYSTEM OVERRIDE STATION AT THIS LOCATION, LABEL BUTTON WITH CONTROLLED AREA.

NOTE TO CONTRACTOR CONCERNING PROJECT PHASING:

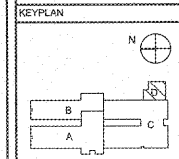
THE WORK SPECIFIED ON THE DRAWINGS AND SPECIFICATIONS ILLUSTRATED THE COMPLETED CONTRACTUAL REQUIREMENTS. THIS PROJECT IS PHASED IN MULTIPLE PHASES. THE AREA OF EACH PHASE IS DESCRIBED IN THE ARCHITECTURAL DOCUMENTS AND THE CONTRACTOR SHALL REVIEW THESE PHASING REQUIREMENTS. CONTRACTOR SHALL INCLUDE IN HIS BID ALL COSTS REQUIRED TO ACCOMPLISH THE CONTRACT IN PHASES. THE CONTRACT DOCUMENTS DO NOT DESCRIBE THE SPECIFIC WORK REQUIRED BY THE CONTRACTOR TO PERFORM THE PROJECT IN PHASES. BUT CONTRACTOR SHALL PREPARE PHASING PLAN AND SUBMIT TO ARCHITECT/ENGINEER AND HENRY COUNTY MAINTENANCE DEPARTMENT PRIOR TO BEGINNING WORK.

GENERAL LIGHTING NOTE

EXISTING 277V LIGHTING CIRCUITS WITHIN BUILDINGS SHALL BE UTILIZED TO POWER NEW LIGHTING. SOME AREAS REQUIRE REWORK OF LIGHTING CIRCUIT SYSTEM SPACES WHILE OTHERS MAY CONNECT DIRECTLY TO EXISTING SWITCHED CIRCUITS. UNDER THIS PROJECT OCCUPANCY SENSORS AND DEDICATED LIGHTING CONTROL PANELS SHALL BE INSTALLED. THE EXISTING COMMON AREA LIGHTING CIRCUITS SHALL BE INTERCEPTED WITHIN ELECTRICAL ROOM AND REWIRING VIA NEW DEDICATED LIGHTING CONTROL PANEL. EXISTING CIRCUIT AND WIRING MAY BE UTILIZED WHERE IT MEETS THIS SPECIFICATION.

ELECTRICAL NEW WORK LIGHTING PLAN - SECTOR 'D'
SCALE: 1/8"=1'-0"

REVISIONS/ISSUANCES		
NO.	DATE	DESCRIPTION



AH&P
CONSULTING ENGINEERS

ANDREWS, HAMMOCK & POWELL, INC.
Suite 102
MACON, GEORGIA 31210
MACON (478) 405-8001
FAX (478) 405-8210
WWW.AHPENGR.COM



Manley Spangler Smith Architects
A Professional Corporation

525 East Taylor St.
P.O. Box 880
Gaines, Georgia 30224
Office 770.227.9473
Fax 770.228.3442

PROJECT:
RENOVATIONS, MODIFICATIONS, & ADDITIONS TO HENRY COUNTY SCHOOLS - GROUP 10 WOODLAND ELEMENTARY SCHOOL (ITEM A)

CLIENT:
HENRY COUNTY BOARD OF EDUCATION

SHEET TITLE:
ELECTRICAL NEW WORK LIGHTING PLAN - SECTOR 'D'

L.U. - 55
P.T.E. - 675
FACILITY CODE: 075-0108
© 2018 Manley Spangler Smith Architects, PC

PROJECT NUMBER: 2017151A
DATE: 06/07/18
SCALE: 1/8"=1'-0"
DRAWN BY: JLS
CHECKED BY: NHO

SHEET NO.: E104