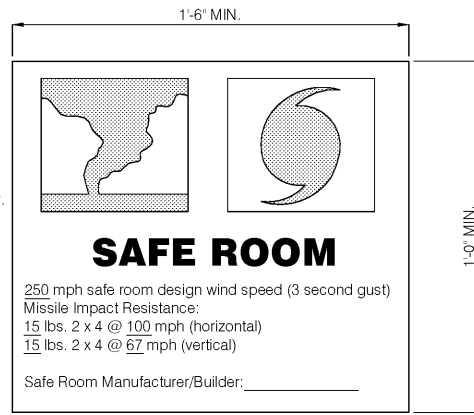
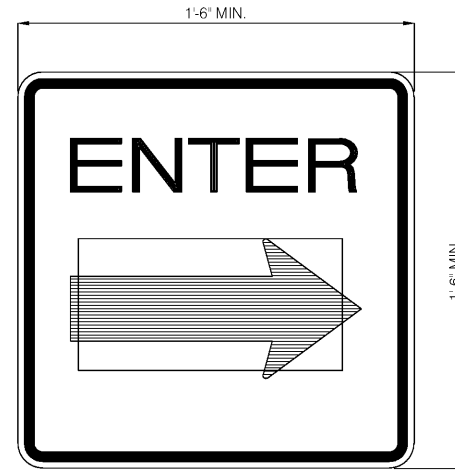


HEADER
SCALE: 1" = 1'-0"

ALUMINUM SIGN BACKGROUND
NON-REFLECTIVE "HURRICANE - SAFE
ROOM" AND LOGO SHALL BE REFLECTIVE
USING 3M SCOTCHLITE DIAMOND GRADE
REFLECTIVE SHEETING. YELLOW IN COLOR.
VERIFY WITH MANUFACTURER THAT SIGN
WILL GLOW FOR MIN. OF 6 HOURS, IN THE
EVENT OF POWER LOSS.



201 BUILDING I.D. SIGN
N.T.S.

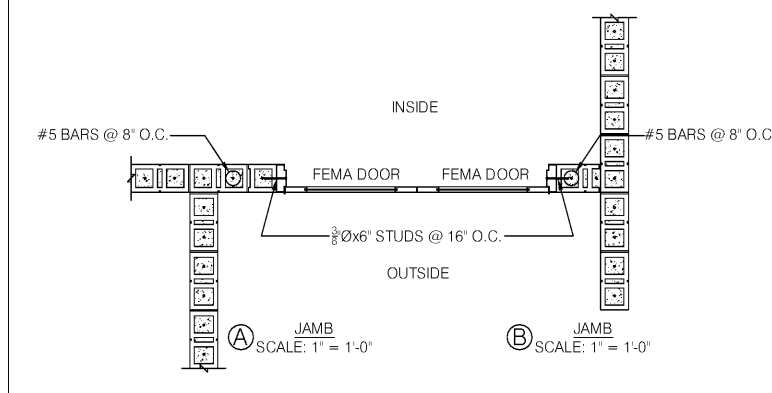


202 BUILDING ENTRANCE SIGN
N.T.S.

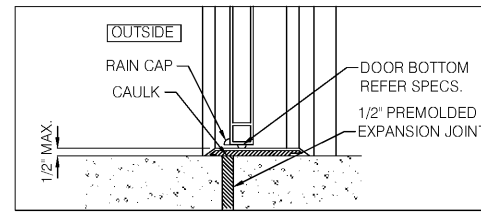
ALUMINUM SIGN BACKGROUND
NON-REFLECTIVE "ENTER" AND LOGO SHALL
BE REFLECTIVE USING 3M SCOTCHLITE
DIAMOND GRADE REFLECTIVE SHEETING.
YELLOW IN COLOR. VERIFY WITH
MANUFACTURER THAT SIGN WILL GLOW
FOR MIN. OF 6 HOURS, IN THE EVENT OF
POWER LOSS.

Reflective aluminum signs are visible at night.

- Sign is fabricated from aluminum that is rust and durable and does not rust.
- Signs have predrilled holes for easy installation. Signs can be installed onto a post, fence or wall.

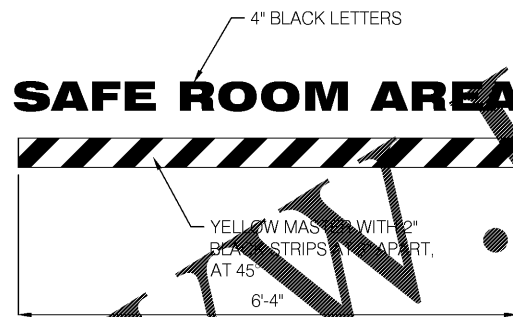


JAMB DETAIL
SCALE: 1/2" = 1'-0"

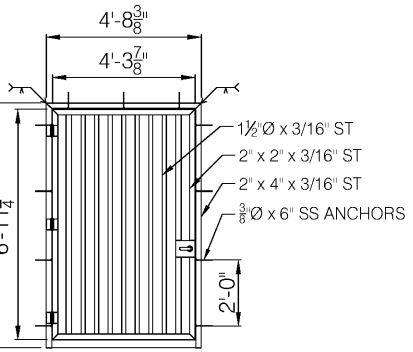


NOTE:
THRESHOLD IS LEVEL AT DOOR "A"

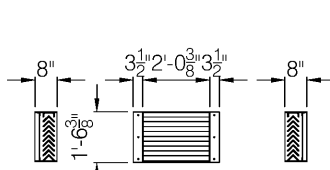
206 THRESHOLD DETAIL
SCALE: 3" = 1'-0"



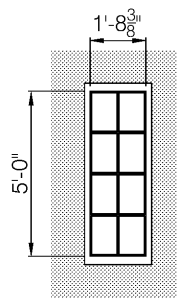
207 FLOOR SIGNAGE
SCALE: 1" = 1'-0"



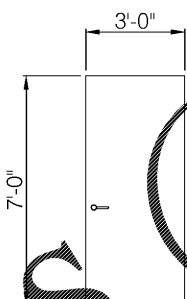
205 GATE DETAIL
SCALE: 3/8" = 1'-0"



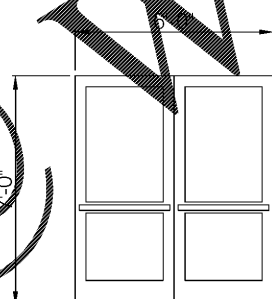
206 LOUVER DETAIL
SCALE: 3/8" = 1'-0"



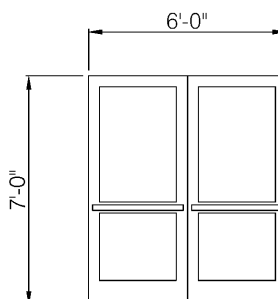
201 WINDOW DETAIL
SCALE: 3/8" = 1'-0"



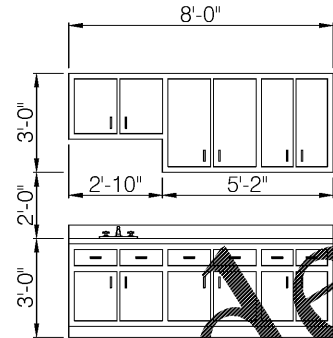
202 DOOR DETAIL
SCALE: 3/8" = 1'-0"



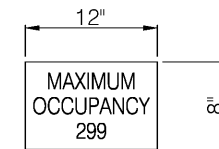
203 DOOR DETAIL
SCALE: 3/8" = 1'-0"



204 DOOR DETAIL
SCALE: 3/8" = 1'-0"

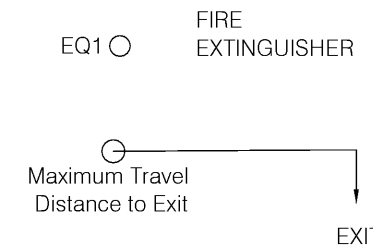


CABINET DETAIL
SCALE: 3/8" = 1'-0"



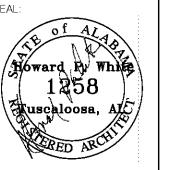
- SIGN REQUIREMENTS:
- 1) LETTERS A MINIMUM OF 1 1/2" TALL
 - 2) BACKGROUND COLOR MUST BE STARK CONTRAST TO LETTERS

LIFE SAFETY PLAN



SCHEDULE DETAILS
AS NOTED

HOWARD P. WHITE ARCHITECT AIA
4131 HILLSBORO DR.
TUSCALOOSA, ALABAMA 35404
205-799-1289
email: hpwo@att.net



JEFFERSON COUNTY
FULTONDALE STORM SHELTER
FULTONDALE, ALABAMA

NO.	DATE	DESCRIPTION
1	5/17/15	ADDITIONAL REVISION
2	5/21/15	REVISION

DRAWN: GLS
CHECKED: GLS
DATE: 1-19-17
JOB NO.: 15-211
SHEET: A3