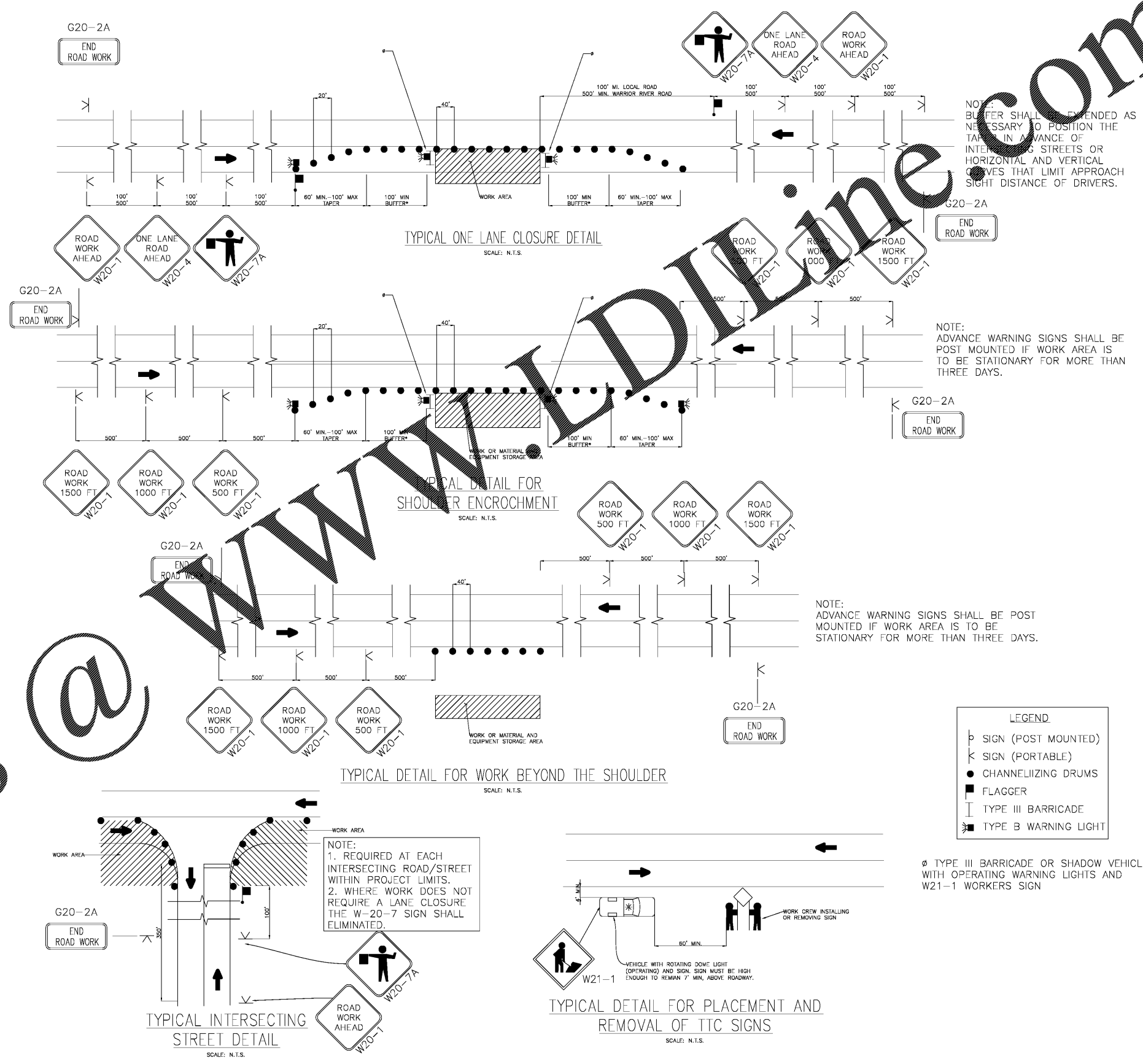


TRAFFIC CONTROL NOTES

- The Contractor shall prepare a Temporary Traffic Control (TTC) plan of action and schedule specifically for the project to address phases and progression of work, time of operations, work zone requirements and lengths, material and equipment storage and staging, one lane closure requirements and temporary traffic control device installation and maintenance. The Contractor's plan and schedule shall be submitted to Jefferson County Roads and Transportation Department for review and approval before beginning any work on the project. Any changes to the approved plans and schedule must be approved by the Jefferson County Roads and Transportation Department.
- The Contractor shall be responsible for implementing and maintaining all necessary TTC measures to comply with approved construction and TTC plans, the standards set forth the Manual on Uniform Traffic Control Devices, and other reasonable safety precautions to provide a safe environment for the traveling public, construction personnel and others who have access to and responsibilities in the project site.
- The Contractor shall be responsible for providing the proper equipment, apparel and training necessary for all construction personnel to render safe construction operations and traffic conditions.
- All traffic control devices (signs, signals, markings, channelizing devices, lights, temporary traffic barriers, and other devices) shall be installed and maintained in accordance with these plans, the Manual on Uniform Traffic Control Devices, Latest Edition, and all otherwise required by Jefferson County Roads and Transportation Department.
- Traffic control devices shall meet the standard material and installation requirements specific in the latest edition of the ALDOT Standard Specifications for Highway Construction. Signs shall be minimum 36"x36" with Type III High-Intensity retro-reflective sheeting in good condition.
- The Contractor shall keep daily inspection and maintenance reports of traffic control measures and devices that are in place. All deficiencies, safety concerns, location sketches, spacing dimensions, photographs and additional measures that may be needed should be included in the reports. A copy of the reports shall be provided to the Jefferson County Roads and Transportation Department for review and records.
- Flagger shall communicate with two way radios and shall be properly equipped, attired, and trained to meet all requirements and follow all procedures of the Manual on Uniform Traffic Control Devices, Latest Edition and the Jefferson County Roads and Transportation Department.
- Permanent roadway signs or temporary construction signs which are not applicable or inappropriate for the current conditions shall be covered or removed.
- If construction operations are within two feet of the travel lane of an open road, it will be necessary to close the lane in accordance with the plans and MUTCD recommendations, unless otherwise approved by County personnel.
- The Contractor shall keep open roadways clean and free of construction debris, dirt, loose gravel, or other objectionable material that may cause hazardous driving conditions.
- Roadways and driveways shall remain open during construction, unless the closure is included in the approved plans or required for emergency construction operations and approved by Jefferson County Roads and Transportation Department. The Contractor shall coordinate and schedule all single lane closures with Jefferson County Roads and Transportation Department. Typically, lane closures will not be allowed during peak traffic times, wet weather, darkness and around dawn or dusk. Non-emergency closure of the entire roadway must be approved by the JEFFERSON COUNTY COMMISSION. The request for a road closure shall be made to Jefferson County Roads and Transportation Department a minimum of 21 days prior to the requested closing. The advance notice is required in order for the request to proceed through the standard COUNTY COMMISSION process.
- When construction is not ongoing, all equipment and materials shall be parked or stored as far away from the road as possible and appropriate traffic control measures shall be in place as shown in the TYPICAL DETAIL FOR SHOULDER ENCROACHMENT or the TYPICAL DETAIL FOR WORK BEYOND THE SHOULDER. During construction when construction equipment is not in use and material is not staged for installation, it shall be parked or stored as far away from the road as possible.
- When the utility installation project is to exceed 30 days, project notification signs shall be installed at each end of the project at least one week in advance of the construction, and time period of construction, starts to finish.
- The Contractor shall coordinate construction operations and accommodate emergency access as much as practical in maintaining safe ingress and egress to emergency responders.



NOTE: BUFFER SHALL BE EXTENDED AS NECESSARY TO POSITION THE TAPER IN ADVANCE OF INTERSECTING STREETS OR HORIZONTAL AND VERTICAL CURVES THAT LIMIT APPROACH SIGHT DISTANCE OF DRIVERS.

NOTE: ADVANCE WARNING SIGNS SHALL BE POST MOUNTED IF WORK AREA IS TO BE STATIONARY FOR MORE THAN THREE DAYS.

NOTE: ADVANCE WARNING SIGNS SHALL BE POST MOUNTED IF WORK AREA IS TO BE STATIONARY FOR MORE THAN THREE DAYS.

NOTE:
1. REQUIRED AT EACH INTERSECTING ROAD/STREET WITHIN PROJECT LIMITS.
2. WHERE WORK DOES NOT REQUIRE A LANE CLOSURE THE W-20-7 SIGN SHALL BE ELIMINATED.

LEGEND

	SIGN (POST MOUNTED)
	SIGN (PORTABLE)
	CHANNELIZING DRUMS
	FLAGGER
	TYPE III BARRICADE
	TYPE B WARNING LIGHT

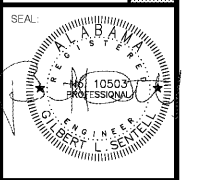
Ø TYPE III BARRICADE OR SHADOW VEHICLE WITH OPERATING WARNING LIGHTS AND W21-1 WORKERS SIGN

TRAFFIC CONTROL DETAILS
N.T.S.

Order Plans

File Name: n:\jobs\2015\15-211\TCP Details.dwg

SENNELL
ENGINEERING SURVEYING
CIVIL · STRUCTURAL · ENVIRONMENTAL · SURVEYING
636 Black Bears Way
Tuscaloosa, AL 35401
Phone: (205) 752-5564
www.sennell.net



JEFFERSON COUNTY
FULTONDALE STORM SHELTER
FULTONDALE, ALABAMA

NO.	DESCRIPTION
DATE	
DRAWN:	GLS
CHECKED:	GLS
DATE:	1-19-17
JOB NO.:	15-211
SHEET:	