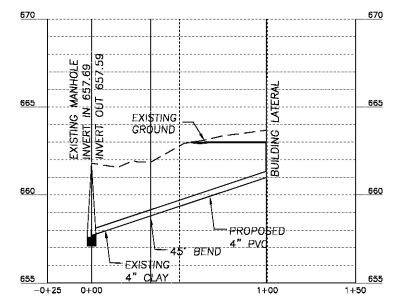
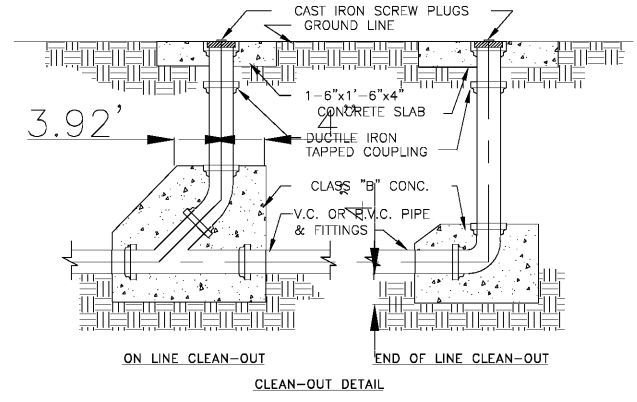


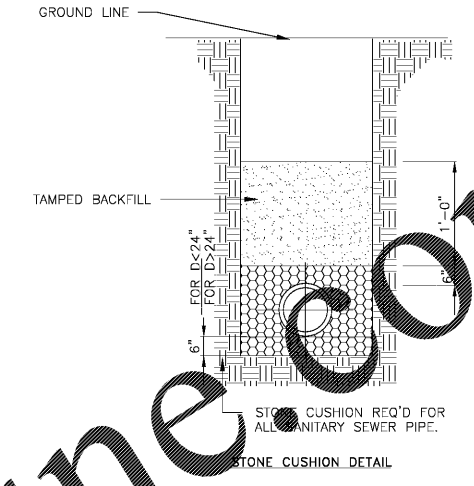
PROPOSED RETAINING WALL PROFILE



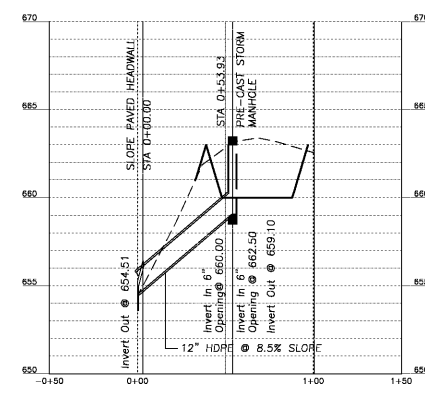
PROPOSED SANITARY SEWER PROFILE



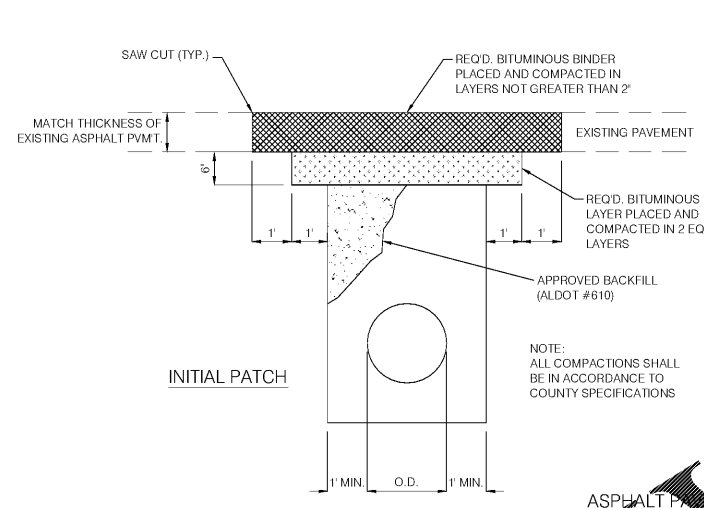
CLEAN-OUT DETAIL



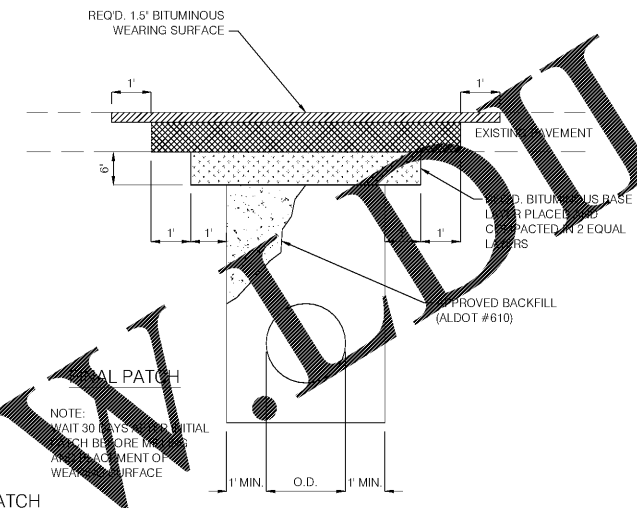
STONE CUSHION DETAIL



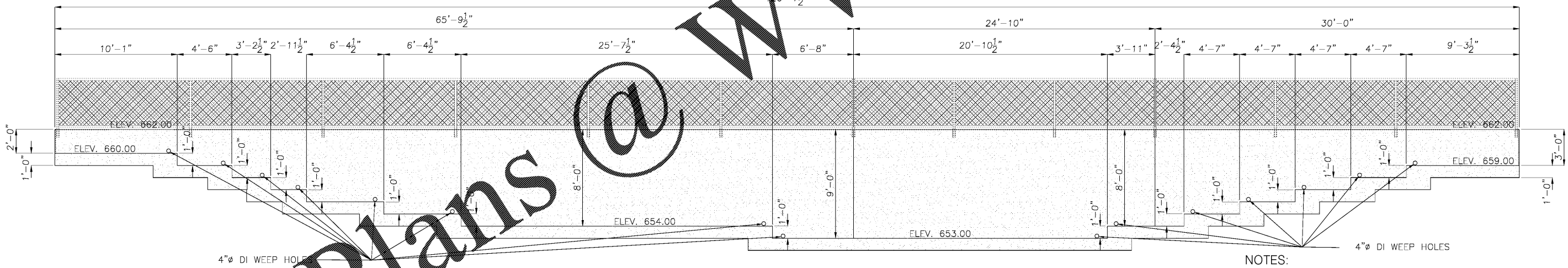
PROPOSED STORM DRAINAGE AT DETENTION POND



INITIAL PATCH

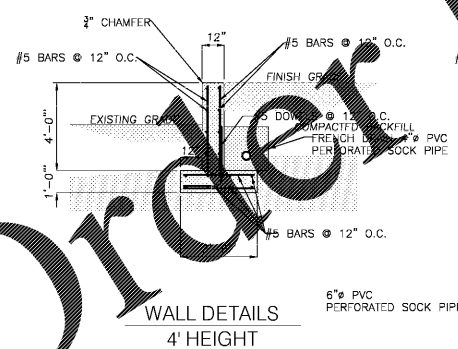


ASPHALT PAVEMENT PATCH

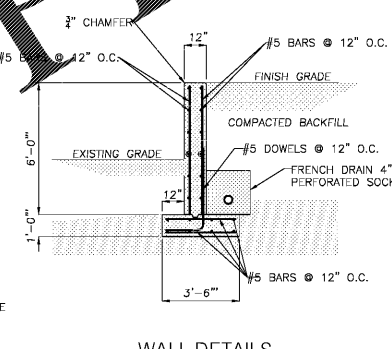


RETAINING WALL PLAN VIEW

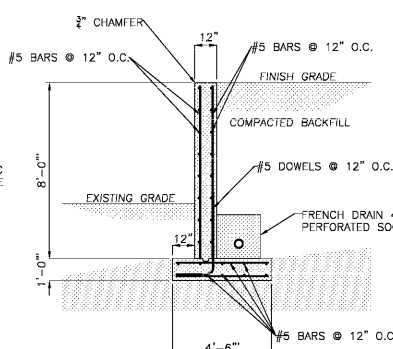
- NOTES:
1. ALL CONCRETE SHALL HAVE A MINIMUM 28 DAY COMPRESSIVE STRENGTH OF 3000 PSI.
 2. ALL REINFORCING STEEL SHALL BE GRADE 60. Fy=60,000 PSI.



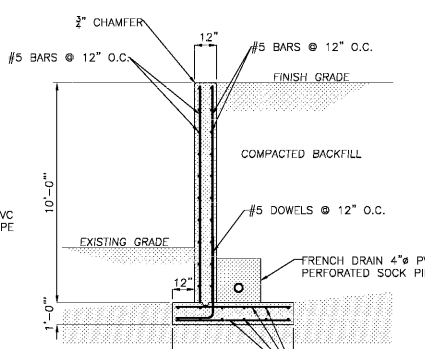
WALL DETAILS 4' HEIGHT



WALL DETAILS 6' HEIGHT



WALL DETAILS 8' HEIGHT



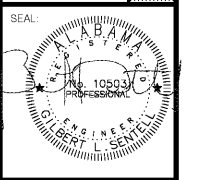
WALL DETAILS 10' HEIGHT

PROFILES AND DETAILS
AS NOTED

File Name: n:\jobs\XXXX\XX-XXX*.dwg

Order Plans @ WWW.LDLine.com

SENNELL
ENGINEERING SURVEYING
CIVIL - STRUCTURAL - ENVIRONMENTAL
636 Black Bears Way
Tuscaloosa, AL 35401
Phone: (205) 752-5564
www.sennell.net



JEFFERSON COUNTY
FULTONDALE STORM SHELTER
FULTONDALE, ALABAMA

NO.	DATE	DESCRIPTION	REVISION
1	06/17		

DRAWN: GLS
CHECKED: GLS
DATE: 1-19-17
JOB NO: 15-211
SHEET: C4