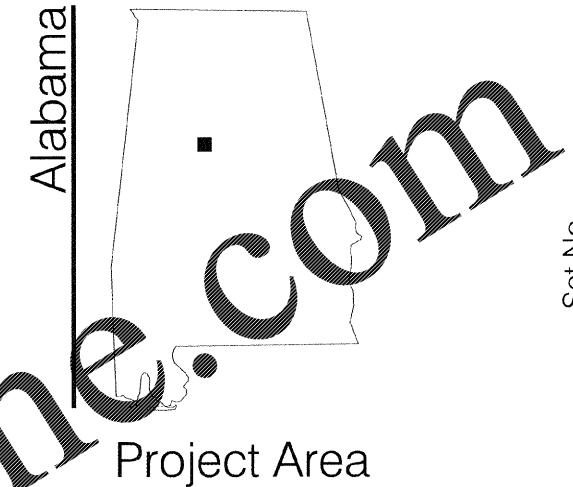
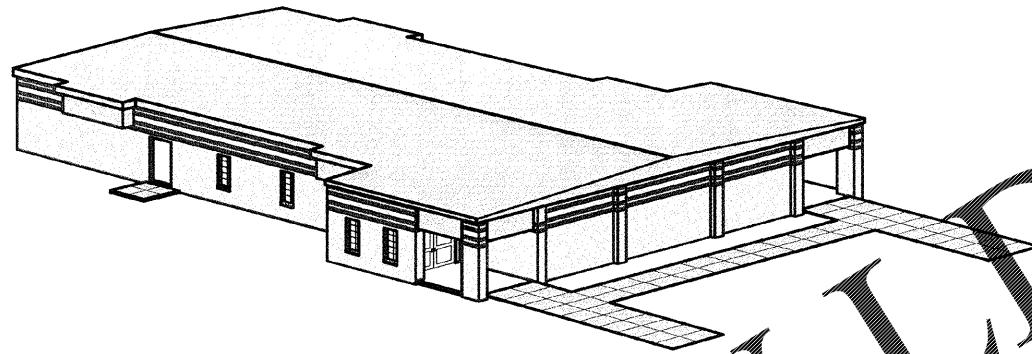


Vicinity Map
Jefferson County, Alabama

Construction Plans Fultondale Storm Shelter

Project No. CDBG-DR-12-03-M-FSS
601 Main Street
Fultondale, Alabama 35068



Set No.

	Code Section	Required By 2015 IBC	Provided in Project
EGRESS	Minimum # of Exits	Table 1006.3.1	2
	Minimum Corridor Width	1020.2	44"
	Minimum Door Width	1010.1.1	32"
	Maximum Dead End Corridor	1020.4	20'
	Maximum Distance to Exits	Table 1017.2	200
FIRE RESISTANCE	Non-Barring Walls & Partitions Interior	Table 601	0 hours
	Floor construction, including supporting beams & joist	Table 601	0 hours
	Roof Construction, including Supporting beams & Joist	Table 601	0 hours
	Exterior Walls	Table 602	Over 30 feet- 0 Hour
	Distance from Property Line/ Required fire Rating)	Table 602	Over 30 feet- 0 Hour
FIRE PROTECTION	Fire Sprinkler	Table 503 504.2, Section 903	Not Provided
	Fire Alarm	907.2.2	Required

January 2017

Index to Sheets

- COVER SHEET _____ C1
- INDEX TO SPECIAL AND STANDARD DRAWINGS _____ C1
- PLANS LEGEND SHEET _____ C2-C3
- PROFILES AND DETAILS _____ C4
- PROJECT NOTES _____ C5
- FIRM MAP _____ C6
- BOUNDARY SURVEY AND TOPOGRAPHIC SURVEY _____ C7
- SITE STAKING PLAN _____ C8
- SITE GRADING PLAN _____ C9
- OMIT _____ C10
- EROSION & SEDIMENT CONTROL PLANS LEGEND _____ C11
- EROSION CONTROL PLAN _____ C12
- TRAFFIC CONTROL PLAN _____ C13
- TRAFFIC CONTROL DETAILS _____ C14-C15
- FLOOR PLAN _____ A1
- FLOOR PLAN SCHEDULES _____ A2
- SCHEDULE DETAILS _____ A3-A4
- ELEVATIONS _____ A5 - A6
- REFLECTIVE CEILING PLAN _____ A7
- STRUCTURAL NOTES _____ S1 - S3
- FOUNDATION PLAN _____ S4
- ROOF PLAN _____ S5
- STRUCTURAL DETAILS _____ S6 - S9
- GENERAL HVAC NOTES, LEGENDS, & SCHEDULES _____ M100
- HVAC PLAN _____ M101
- HVAC DETAILS _____ M102
- ELECTRICAL GENERAL NOTES, LEGENDS, & SCHEDULES _____ E100
- ELECTRICAL POWER WIRING PLAN _____ E101-E102
- ELECTRICAL LIGHTING WIRING PLAN _____ E103
- ELECTRICAL AUXILIARY WIRING PLAN _____ E104
- ELECTRICAL PANEL SCHEDULES AND DETAILS _____ E201
- GENERAL PLUMBING NOTES, LEGENDS, & SCHEDULES _____ P100
- UNDERGROUND PLUMBING PLAN _____ P101
- PLUMBING PLAN _____ P102
- PLUMBING RISER DIAGRAMS _____ P201

PROJECT DESCRIPTION
New building for use as a community storm shelter.

BUILDING INFORMATION

Floor Area: 3520 s.f.
Height: 1 Story

APPLICABLE CODES

- International Building Code, 2015 edition
- International Plumbing Code, 2015 edition
- International Mechanical Code, 2015 edition
- National Electrical Code, 2014 edition
- Revised ADA Accessibility Guidelines
- FEMA 361

LIFE SAFETY INFORMATION

OCCUPANCY CLASSIFICATION A-3
(Section 303.4):

CONSTRUCTION TYPE Type I A, Unsprinklered

OCCUPANCY LOAD - 2015 IBC
Assembly with out fixed seats
Concentrated (chairs only - not fixed) 7sf/ person-Net Area
1500sf/ 7sf/ person = 214 peo

Standing Space
5sf/ person- Net Area
1500sf/ 5sf/ person = 299 people

SENTELL
ENGINEERING
CIVIL . STRUCTURAL . ENVIRONMENTAL SURVEYING
639 Black Bears Way
Tuscaloosa, AL 35401
Phone (205) 752-5564
www.sentell.net

ARCHITECT:
HOWARD P. WHITE, AIA
4131 HILLSBORO DR.
TUSCALOOSA, ALABAMA 35404

ELECTRICAL & HVAC ENGINEER:
ROBBINS ENGINEERING COMPANY, LLC
5945 KNIGHT AVE SUITE B
TUSCALOOSA, ALABAMA 35405

JEFFERSON COUNTY COMMISSIONERS:
JAMES A. STEVENS-PRESIDENT
SANDRA LITTLE BROWN-PRESIDENT PRO TEM
GEORGE BOWMAN
W.D. CARRINGTON
JOE KNIGHT

SUBMITTED FOR APPROVAL

B. Heston

SENTELL ENGINEERING, INC.

APPROVED

Frederick S. Hamilton

DIRECTOR, HUMAN - COMMUNITY SERVICES
& ECONOMIC DEVELOPMENT

APPROVED

Joe Knight

COMMISSIONER, DISTRICT

APPROVED

Tony Petelos

JEFFERSON COUNTY MANAGER

APPROVED

Sandra Little Brown

COMMISSIONER, HUMAN COMMUNITY SERVICES
& ECONOMIC DEVELOPMENT

APPROVED

Jim [Signature]

FULTONDALE MAYOR

