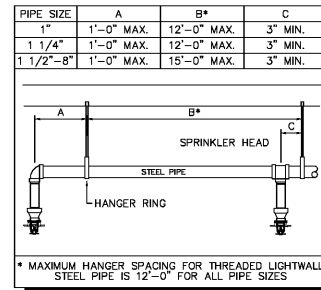


UPRIGHT DETAIL
NOT TO SCALE



HANGER LOCATION DETAIL
NOT TO SCALE

DESIGN CRITERIA

LIGHT HAZARD: .10/GPM OVER 1500 SQ.FT. 225 MAX. SPACING PER HEAD WITH 100/GPM FOR HOSE ALLOWANCE

BAY 101

O.H. GROUP 1: .15/GPM OVER 1500 SQ.FT. 130 MAX/ SPACING PER HEAD WITH 250/GPM FOR HOSE ALLOWANCE

ELECTRICAL ROOM, RISER ROOM

O.H. GROUP 2: .20/GPM OVER 1500 SQ.FT. 130 MAX/ SPACING PER HEAD WITH 250/GPM FOR HOSE ALLOWANCE

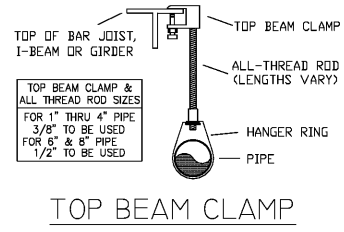
BAY 102

NFPA 13, 2013 FIGURE 11.2.3.2.3.1 DESIGN AREA REDUCTION FOR QUICK RESPONSE SPRINKLERS, WHEN CEILING IS LESS THAN 20'-0" A.F.F.

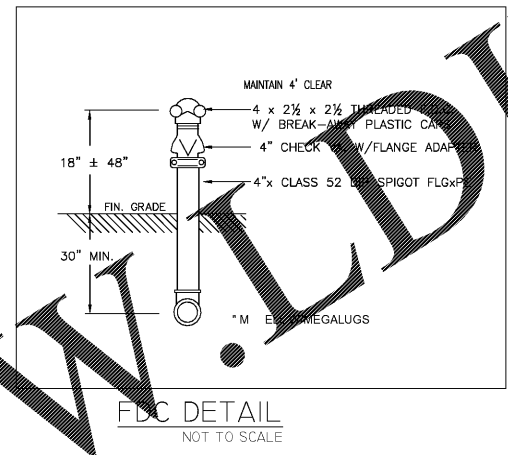
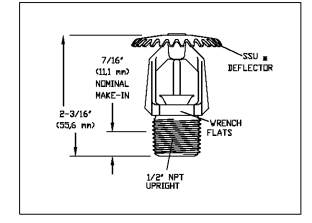
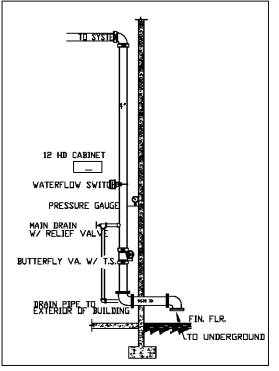
IMPORTANT ADDITIONAL NOTES

- 1- THE SPRINKLER CONTRACTOR SHALL BE RESPONSIBLE TO PROVIDE SHOP DRAWINGS AND HYDRAULIC CALCULATIONS SIGNED AND SEALED BY THEIR OWN FLORIDA REGISTERED PROFESSIONAL ENGINEER OR THE SPRINKLER PERMIT.
- 2- ALL THE SPRINKLERS SHALL HAVE A U.L. APPROVED CORROSION RESISTANT COATING WHEN EXPOSED TO OUTSIDE AIR SALT CHEMICALS MOISTURE AND/OR OTHER CORROSIVE VAPORS SU ICIENT TO CAUSE CORROSION O SUCH DEVICES.
- 3- THE CONTRACTOR SHALL RECEIVE THE ARCHITECT'S APPROVAL OR ALL THE SPRINKLERS/CUTCHECKS FINISHES PRIOR TO ORDERING AND INSTALLING DESPITE WHAT IS SPECI ED IN THESE DOCUMENTS.
- 4- ALL EXPOSED PIPE AND FITTINGS TO OUTSIDE AIR SALT CHEMICALS MOISTURE AND/OR OTHER CORROSIVE VAPORS SU ICIENT TO CAUSE CORROSION O SUCH MATERIALS SHALL BE GALVANIZED PIPE SUCH O GALVANIZED FITTINGS HANG UP WITH STAINLESS STEEL ROD AND HANGERS AND SHALL BE FULLY PAINTED.
- 5- THE SPRINKLER CONTRACTOR SHALL BE RESPONSIBLE TO OBTAIN A FLOW TEST PERFORMED OR WITNESSED BY LOCAL AHJ FIRE DEPARTMENT. FLOW TEST RESULTS SHALL BE MODIFIED ACCORDING TO THE REQUIREMENTS OF BROWARD COUNTY LOCAL AMENDMENTS TO THE FLORIDA FIRE CODE, SECTION F-112.1 TO BE INCORPORATED AS THE HYDRAULIC DATA FOR HYDRAULIC CALCULATIONS PURPOSES.
- 6- THE CONTRACTOR SHALL CREATE SHOP DRAWINGS AND PERFORM HYDRAULIC CALCULATIONS AS PER N PA 11 2 ACCORDING TO THE RESPECTIVE STANDARD REQUIREMENTS BY OWNER STANDARDS! ANY AND BY CODE SHALL SHOW PIPE SIZES ALL FITTINGS AND DIMENSIONAL LOCATIONS OR ALL THE SPRINKLERS MAINS BRANCHES AND PIPING OR THE WATER SUPPLY TO THE CONNECTION O THE SYSTEM.
- 7- ANY PIPE SIZES INDICATED ON THE SPRINKLER EOR DOCUMENTS ARE PROVIDED FOR REFERENCE ONLY INCLUDING THE SIZE OF THE FIRE POINT! SERVICE ENGINEER RECORD MAKES NO REPRESENTATION AND CANNOT TAKE ANY RESPONSIBILITY OR THE ACCURACY O SUCH REPRESENTATION DUE TO THE LACK O INFORMATION IN THE BEGINNING O THE PROJECT THE SPRINKLER CONTRACTOR CANNOT BASE HIS PRICE IN ANY EOR DRAWING PIPE SIZES DUE TO THE GIVEN REASONS THE SPRINKLER CONTRACTOR SHALL BE RESPONSIBLE TO PERFORM AND PROVIDE A HYDRAULICALLY CALCULATED SPRINKLER SYSTEM CONFORMING TO LOCAL AH DROUGHT CONDITIONS PER ALL APPLICABLE N PA CODES HAZARDS INCREASING O REMOTE AREAS AND/OR DENSITIES! BE USED USING AND PROVIDING THE PROPER PIPE SIZES OR THE MOST REMOTE AREAS AND SYSTEMS DEMAND STARTING AT THE DESIGNATED POINT O SERVICE AND SUCH CONDITION SHALL BE RELECTED AND UNDERSTOOD BY THE SPRINKLER CONTRACTOR ASSUMING ALL HIS RESPONSIBILITIES! FINAL PIPE SIZES FROM EOR DRAWINGS BE OBTAINING ANY POSSIBLE CONTRACT WITH THE OWNERS REPRESENTATIVE.
- 8- THE SPRINKLERS SHOWN IN THIS DRAWING ARE A PROPOSED LAYOUT LOCATION ONLY! THE CONTRACTOR SHALL BE RESPONSIBLE FOR FIELD COORDINATION AND FINAL LOCATION O THE SPRINKLER HEADS AS PER N PA 1 AND AH WITH THE RESPECTIVE STANDARD REQUIREMENTS BY CODE AND PIPING OR FINAL FIRE PROTECTION LAYOUT DOCUMENTS PREPARATION AND FINAL INSTALLATION.
- 9- THE CONTRACTOR SHALL COORDINATE ALL SPRINKLER WORK WITH ALL OTHER CONSTRUCTION DISCIPLINES INCLUDING BUT NOT LIMITED TO HVAC PLUMBING ELECTRICAL STRUCTURAL CIVIL ARCHITECTURAL AND FIRE ALARM THE CONTRACTOR SHALL ALSO COORDINATE ANY SPECIAL TESTING REQUIRED BY THE OWNER.
- 10- THE SPRINKLER CONTRACTOR SHALL BE RESPONSIBLE TO COORDINATE WITH THE ALARM CONTRACTOR THE LOCATION AND MONITORING CONNECTION O LOWS AND TAMPER SWITCHES REQUIRED BY THE NEW SPRINKLER SYSTEM TO BE UNDER CODE COMPLIANCE.

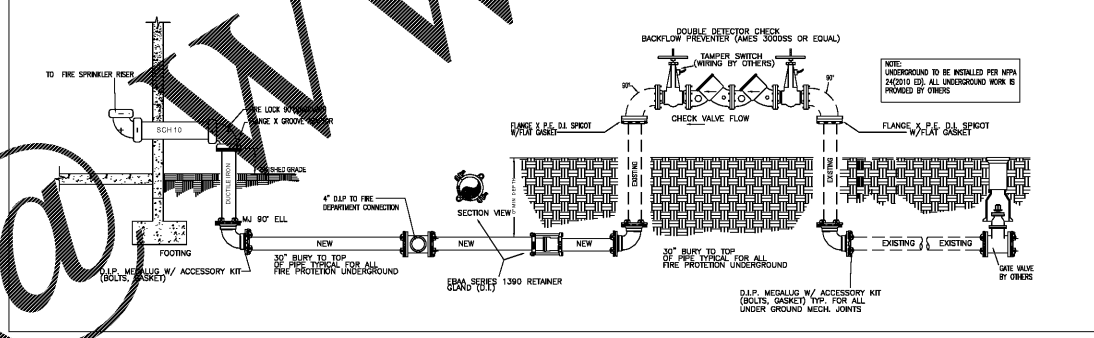
NOTICE:
IT IS THE RESPONSIBILITY OF THE PROPERTY OWNER/MANAGER TO PROVIDE THE REQUIRED MAINTENANCE AND UPKEEP OF THIS FIRE PROTECTION SYSTEM AND RELATED EQUIPMENT ACCORDING TO THE LATEST EDITION O N PA 2 AND ALL GOVERNING CODES AND ORDINANCES.



TOP BEAM CLAMP



FDC DETAIL
NOT TO SCALE



SPIGOT DETAIL
NOT TO SCALE

BACKFLOW DETAIL
NOT TO SCALE

SPRINKLER LEGEND											
SYM	TY	R	K	TEMP	SPR	ORIG	REV	DATE	BY	CHKD	APPV
☉	-	8	15'	155'	TYCO TY-RB				TY-2	SSP	WHT REC
⊗	-	8	15'	155'	TYCO TY-RB				TY-1	SSP	WHT REC

Order Plans

Owner
SHOP CORE PROPERTIES
11077 Flowship Road, Suite 116
Mount Laurel, NJ 08054
Telephone (856) 780-4460
Fax

Architect
SBLM Architects
11430 N. Kendall Drive, Suite 310
Miami, FL 33176
Telephone 305 412 9187
Fax 305 412 6731
www.sblm.com

Consultants
Civil
Langan Engineering

Structural
Bliss & Nytray, Inc.
Electrical/Mechanical/Plumbing
B&K Engineering Group

Revisions/Issues	
06/21/18	PERMIT SET

Key Plan

Seal

James L. Cohen AR0015903
Project Title
SOUTHERN PALM CROSSING
BUILDING SHELL
11001-11161 Southern Blvd.
Royal Palm Beach, FL. 33411

Job Number 017512.00
Drawing
FIRE SPRINKLER DETAILS
Scale AS SHOWN
Drawing Date 05/16/18

Drawing No.

FS1.1
Sheet Of

B&K PROJECT: 208-025
PROJECT MANAGER: JAM J. BOGOTA
06/21/2018
DATE

PRIOR TO SUBMITTING THE BID, THE CONTRACTOR SHALL FIELD VERIFY ALL EXISTING CONDITIONS AND INFORM THE ARCHITECT AND THE ENGINEER OF ANY DISCREPANCY BETWEEN THESE CONDITIONS AND THE EXISTING CONDITIONS AND SHALL INCLUDE IN THE BID TO CORRECT THE SAME AS DIRECTED. THE ENGINEER IS NOT RESPONSIBLE FOR ANY ADDITIONAL COSTS RESULTING FROM VERIFYING EXISTING CONDITIONS UNCOVERED AFTER CONTRACT HAS BEEN AWARDED. NO CHANGES SHALL BE MADE TO THESE PLANS WITHOUT PRIOR APPROVAL FROM THE ENGINEER OF RECORD. ALL CHANGES SHALL BE SUBMITTED FOR REVIEW PRIOR TO INSTALLATION. ANY FUTURE WORK SHALL BE FIELD.