

Owner  
 SHOP MORE PROPERTIES  
 2701 N. Dixie Highway, Suite 116  
 Miami, FL 33176  
 Telephone (856) 780-4460  
 Fax

Architect  
 SBLM Architects  
 11430 N. Kendall Drive, Suite 310  
 Miami, FL 33176  
 Telephone 305 412 9187  
 Fax 305 412 6731  
 www.sblm.com

Consultants  
 Civil  
 Langan Engineering

Structural  
 Bliss & Nytray, Inc.  
 Electrical/Mechanical/Plumbing  
 B&K Engineering Group

Revisions/Issues

06/21/18 PERMIT SET

Key Plan

Seal

James L. Cohen AR0015903

Project Title  
 SOUTHERN PALM CROSSING  
 BUILDING SHELL  
 11001-11161 Southern Blvd.  
 Royal Palm Beach, FL 33411

Job Number 017512.00

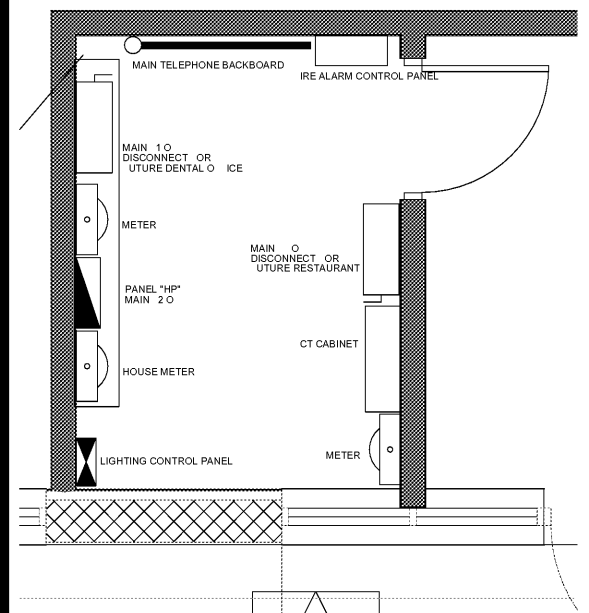
Drawing  
 ELECTRICAL PLAN

Scale AS SHOWN  
 Drawing Date

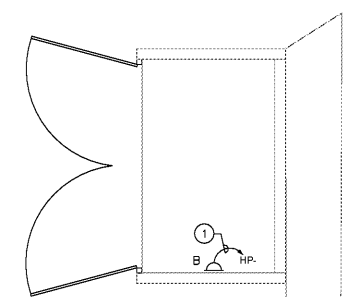
Drawing No.

E1.1

Sheet Of

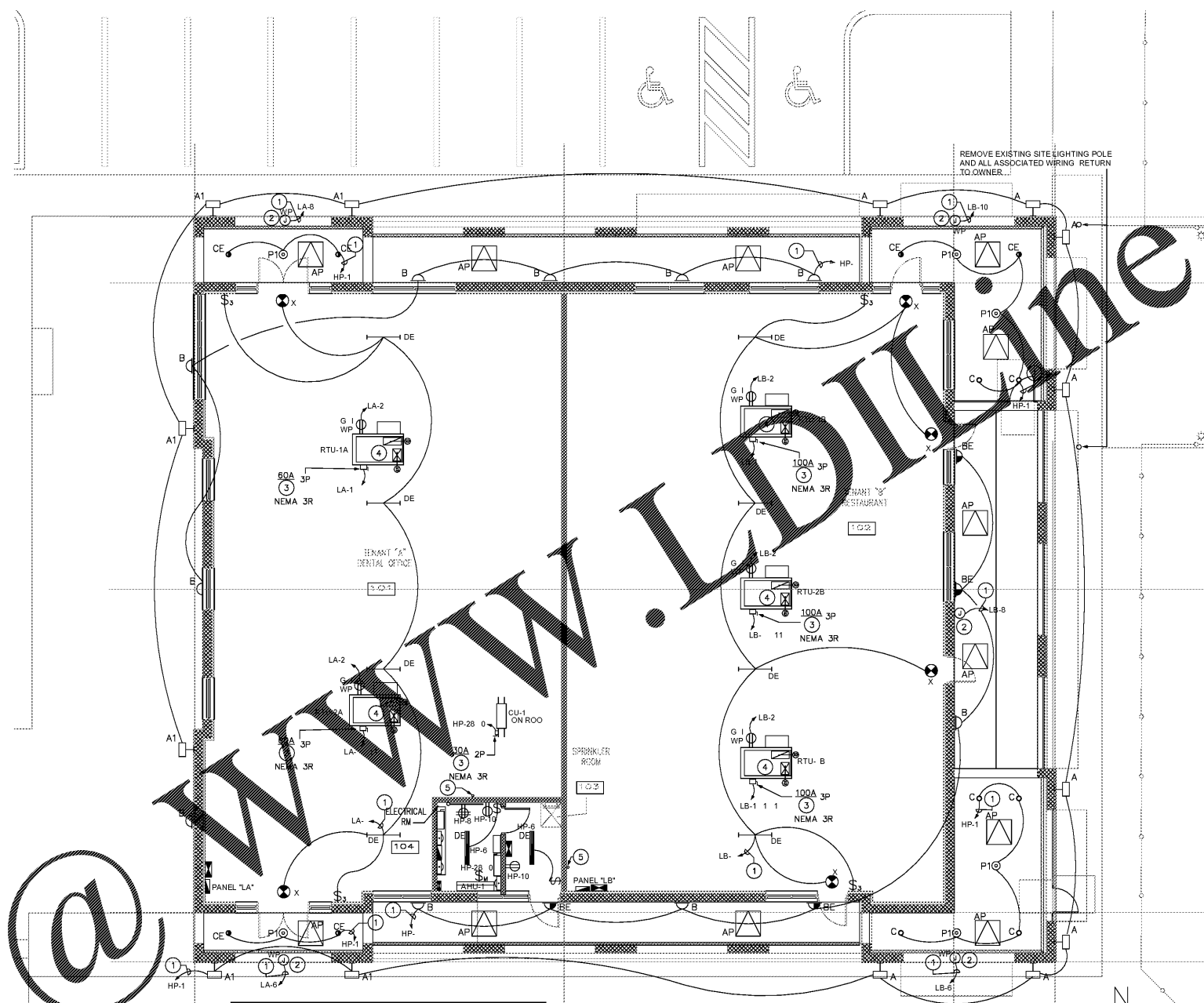


MAIN ELECTRICAL ROOM  
 SCALE: 1/2" = 1'-0"



DUMPSTER ENCLOSURE PARTIAL PLAN  
 SCALE: 1/8" = 1'-0"

ELECTRICAL PLAN  
 SCALE: 1/8" = 1'-0"



- POWER KEY NOTES**
- WIRE CIRCUIT THROUGH LIGHTING CONTROL PANEL. COORDINATE ALL CONTROLS WITH OWNER PRIOR TO ROUGH-IN.
  - PROVIDE WEATHERPROOF JUNCTION BOX FOR FUTURE TENANT SIGN. COORDINATE EXACT LOCATION AND REQUIREMENTS WITH THE OWNER AND ARCHITECT PRIOR TO ROUGH-IN.
  - PROVIDE FUSES PER MANUFACTURER RECOMMENDATIONS.
  - ROOF TOP EQUIPMENT:
    - VERIFY EXACT RTU LOCATION IN FIELD
    - ELECTRICAL CONDUIT/FEEDERS FOR THE ROOF MOUNTED UNITS SHALL BE RUN IN CEILING SPACE AND NOT ON ROOF DECK. OTHERWISE SIZING SHALL BE AS PER NEC 2014 - TABLE 310.15(B)(2)(C)
    - CIRCUIT BREAKER/DISCONNECT MUST MAINTAIN 3"-0" CLEARANCE IN FRONT.
    - CONTRACTOR TO PROVIDE 1/2" EMPTY CONDUIT WITH PULL STRINGS FOR CONTROL WIRING FROM RTU TO EQUIPMENT TO THERMOSTAT.
  - PROVIDE (1) EMPTY 1" CONDUIT WITH PULL STRING FROM MAIN TELEPHONE BACKBOARD TO TENANT SPACE. STUB UP 6" A.F.F. VERIFY EXACT ROUTING WITH OWNER AND ARCHITECT PRIOR TO INSTALLATION.
  - PROVIDE WEATHERPROOF JUNCTION BOX FOR MONUMENT SIGN. COORDINATE EXACT LOCATION AND REQUIREMENTS WITH THE OWNER AND ARCHITECT PRIOR TO ROUGH-IN.

NOTE: ABOVE SHOW WINDOW RECEPTACLES AND TENANT POWER OUTLETS SHALL BE A SEPARATE TI PERMIT WORK SCOPE. (BY OTHERS).

LOCATION OF EXISTING FP&L PAD MOUNTED TRANSFORMER



B&K PROJECT: 208-022  
 PROJECT MANAGER: JAM J. BEOYTA  
 06/21/2018  
 DATE

**B**  
 B&K Engineering Group  
 2701 NW BOCA RATON BLVD  
 SUITE 100  
 BOCA RATON, FL 33431  
 MECH DEPT.  
 TEL: 561-716-7120  
 ELEC DEPT.  
 TEL: 954-644-9612  
 CERTIFICATION OF AUTHORIZATION  
 NO. 21929

PRIOR TO SUBMITTING THE BID, THE CONTRACTOR SHALL FIELD VERIFY ALL EXISTING CONDITIONS AND INFORM THE ARCHITECT AND THE ENGINEER OF ANY DISCREPANCY BETWEEN THESE CONDITIONS AND THE EXISTING CONDITIONS AND SHALL INCLUDE IN THE BID TO CORRECT THE SAME AS DIRECTED. THE ENGINEER IS NOT RESPONSIBLE FOR ANY ADDITIONAL COSTS RESULTING FROM VERIFIABLE EXISTING CONDITIONS DISCOVERED AFTER CONTRACT HAS BEEN AWARDED. NO CHANGES SHALL BE MADE TO THESE PLANS WITHOUT PRIOR APPROVAL FROM THE ENGINEER OF RECORD. ALL CHANGES SHALL BE SUBMITTED FOR REVIEW PRIOR TO INSTALLATION. NOT FOR CONSTRUCTION UNTIL PERMITS HAVE BEEN OBTAINED.

Order Plans