

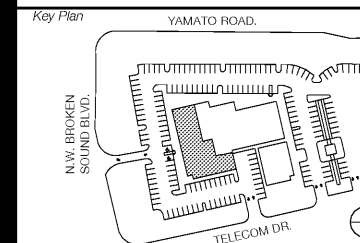
OWNER  
**SUBCORE PROPERTIES**  
 107 Fellowship Road, Suite 116  
 Mount Laurel, NJ 08054  
 Telephone (856) 780-4460  
 Fax

Architect  
**SBLM Architects**  
 11430 N. Kendall Drive, Suite 310  
 Miami, FL 33176  
 Telephone 305 412 9187  
 Fax 305 412 6731  
 www.sblm.com

Consultants  
 Civil  
**Langan Engineering**  
 Structural  
**Bliss & Nyitray, Inc.**  
 Electrical/Mechanical/Plumbing

Revisions/Issues

06/21/18 PERMIT SET



Seal

Lazaro Alfonso, P.E. FL Reg. No.: 69782

Project Title  
**SOUTHERN PALM CROSSING**  
 BUILDING SHELL  
 11001-11161 Southern Blvd.  
 Royal Palm Beach, FL 33411

Job Number 017512.00 - 17M32

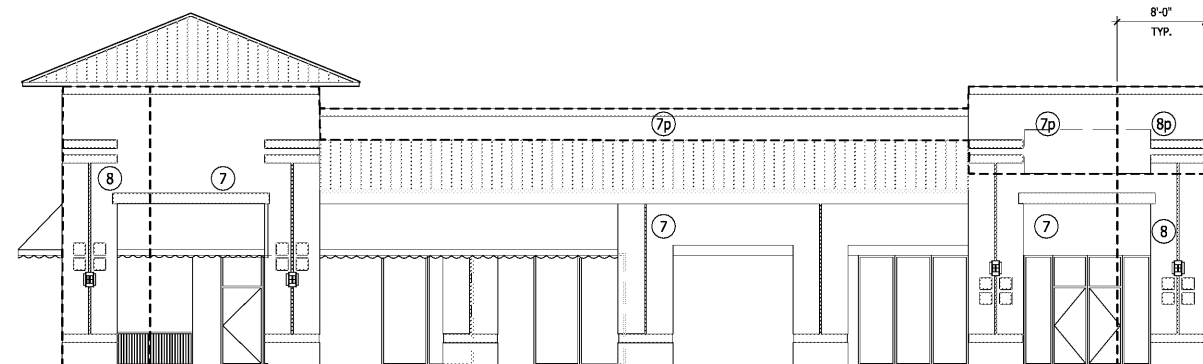
Drawing  
**WALL WIND DIAGRAMMS**

Scale  
 Drawing Date 06/21/18

Drawing No.

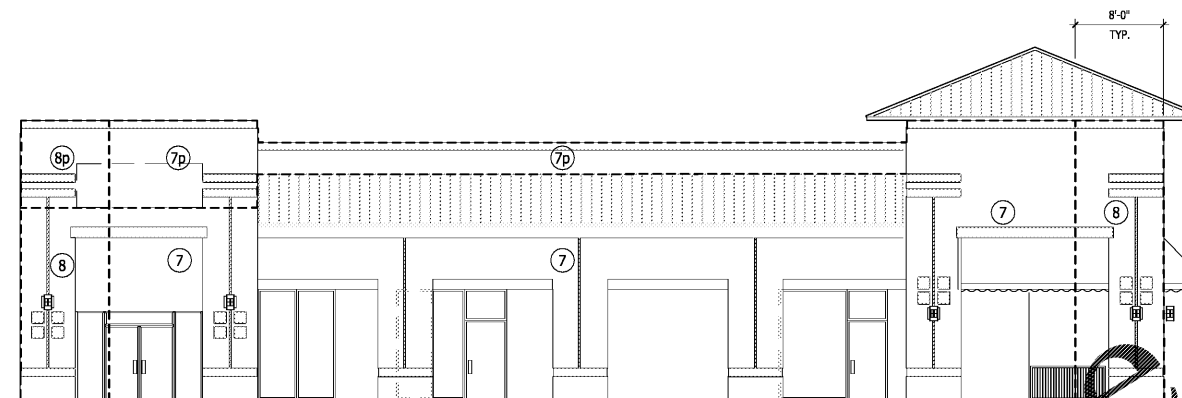
**S-103**

Sheet Of



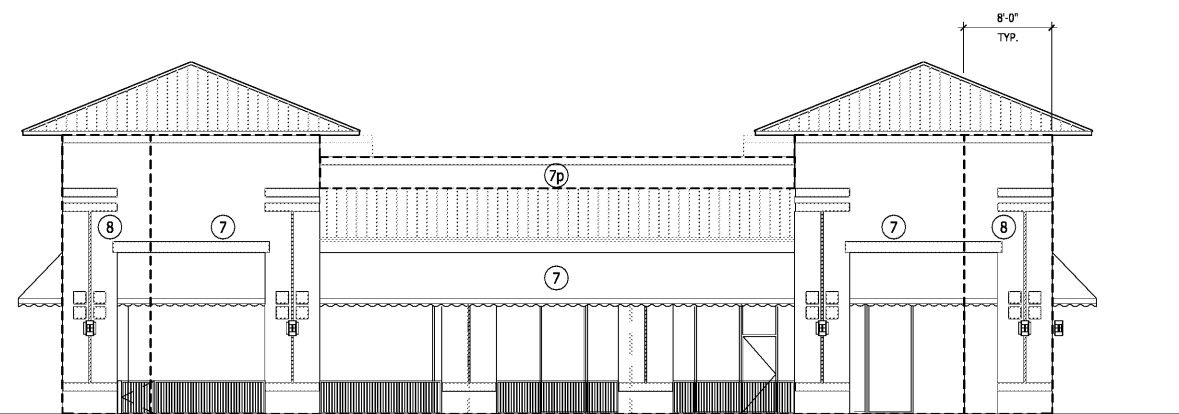
NORTH ELEVATION

SCALE: 1/8"=1'-0"



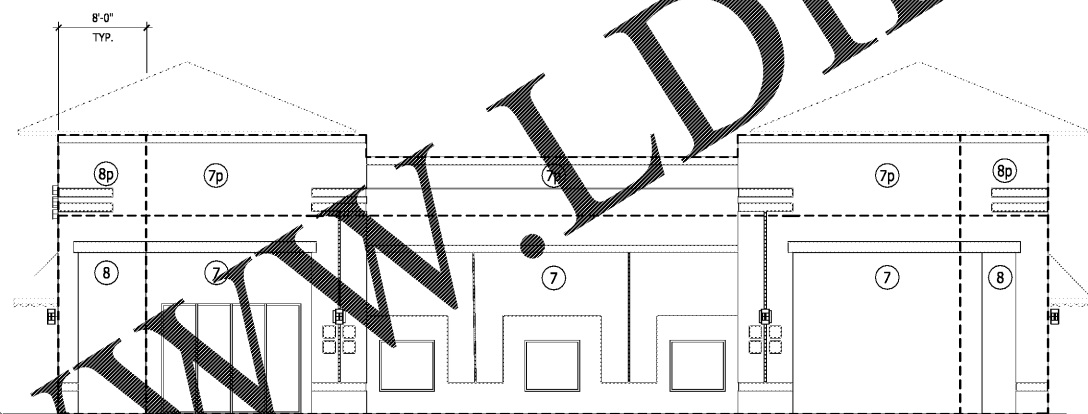
SOUTH ELEVATION

SCALE: 1/8"=1'-0"



EAST ELEVATION

SCALE: 1/8"=1'-0"



WEST ELEVATION

SCALE: 1/8"=1'-0"

WALL WIND PRESSURES (PSF)						
ZONE	10	20	50	100	200	500
7	+41	+29	+17	+12	+8	+5
8	-41	-29	-17	-12	-8	-5

PARAPET WIND PRESSURES (PSF)						
ZONE	10	20	50	100	200	500
7p	+90	+50	+27	+18	+12	+8
8p	-90	-50	-27	-18	-12	-8

- WIND PRESSURE NOTES
- Numbers on this sheet are the components and cladding gross unfactored service pressures perpendicular to the surface (in P.S.F.) based on tributary area. Multiply service pressures by 1.07 to obtain wind pressures for factored loads using strength design (ASCE 7-10 2.3).
  - Pressures are derived from ASCE 7-10.
  - Directionality factor  $K_d = .85$ .
  - Negative pressures act away from surface, positive pressures act toward surface.
  - Zone 7 and 8 pressures shall be used at the underside of soffits.
  - Shaded region of roof wind pressure diagram represents areas with soft pressures and are to be designed for wind pressures per note 5.

Order Plans

WWW.LDILine.com