

MATERIAL FINISH & COLOR PALETTE				
LOC.	MARK	ITEM	MANUFACTURER	FINISH TEXTURE MAT'L
LOCAL SHOPS	A	PRIMARY	SHERWIN WILLIAMS	TEXTURE COATING SW 6078 'REALIST BEIGE'
	B	FEATURE	SHERWIN WILLIAMS	TEXTURE COATING SW 6080 'UTTERLY BEIGE'
	C	BASE	SHERWIN WILLIAMS	TEXTURE COATING SW 6082 'COBBLE BROWN'
COMMON ELEMENTS	L	RUSTICATION/TRIM		TEXTURE COATING SW6077 'EVERYDAY WHITE'
	M	ROOFING		MTL STANDING SEAM ROOF SNAP-CLAD PANEL BY PETERSON ALUMINUM SHOP. FINISHED COLOR TO MATCH EXISTING BUILDINGS
	N	STOREFRONT & WINDOWS	MATERIAL FRAME COLOR	ALUMINUM BRONZE
			GLASS	BRONZE TINT HEAVY MISSILE IMPACT
	P	DOORS		HOLLOW METAL HEAVY MISSILE IMPACT MATCH ADJ. WALL COLOR
	Q	ORNAMENTAL GRILLE		BRONZE
	R	LIGHTING	ALUMINUM	BRONZE
	S	FUTURE AWNING BY TENANT	FABRIC	GREEN

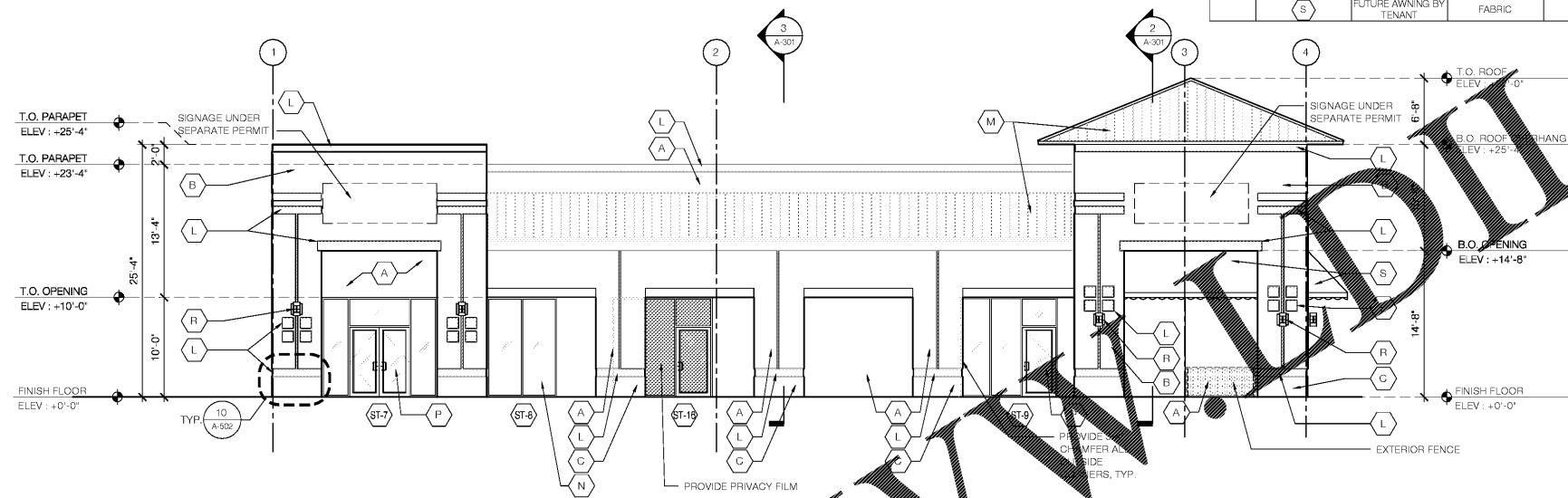
OWNER  
**SHORE PROPERTIES**  
 30 Fellowship Road, Suite 116  
 Mount Laurel, NJ 08054  
 Telephone (856) 780-4460  
 Fax

Architect  
**SBLM Architects**  
 11430 N. Kendall Drive, Suite 310  
 Miami, FL 33176  
 Telephone 305 412 9187  
 Fax 305 412 6731  
 www.sblm.com

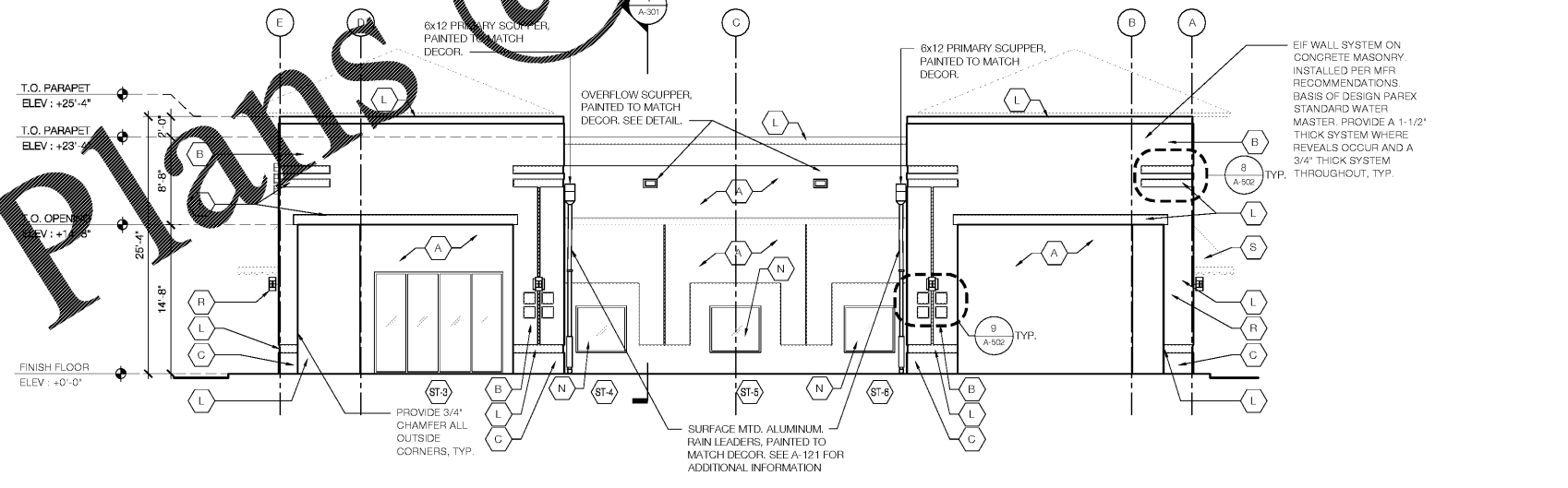
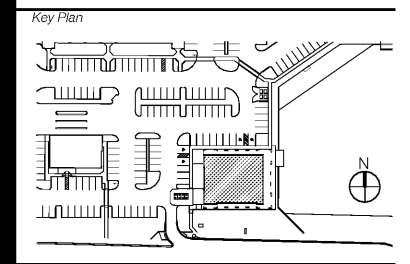
Consultants  
 Civil  
**Langan Engineering**

Structural  
**Bliss & Nytray, Inc.**  
 Electrical/Mechanical/Plumbing  
**B&K Engineering Group**

Revisions/Issues  
 06/21/18 PERMIT SET



**1 SOUTH BUILDING ELEVATION**  
 SCALE: 1/8" = 1'-0"



**2 WEST BUILDING ELEVATION**  
 SCALE: 1/8" = 1'-0"

James L. Cohen AR0015903  
 Project Title  
**SOUTHERN PALM CROSSING**  
 BUILDING SHELL  
 11001-11161 Southern Blvd.  
 Royal Palm Beach, FL 33411

Job Number **017512.00**  
 Drawing  
**BUILDING ELEVATIONS**  
 Scale **AS SHOWN**  
 Drawing Date **06/21/18**

Drawing No.

Order Plans @

WWW.IDLine.com