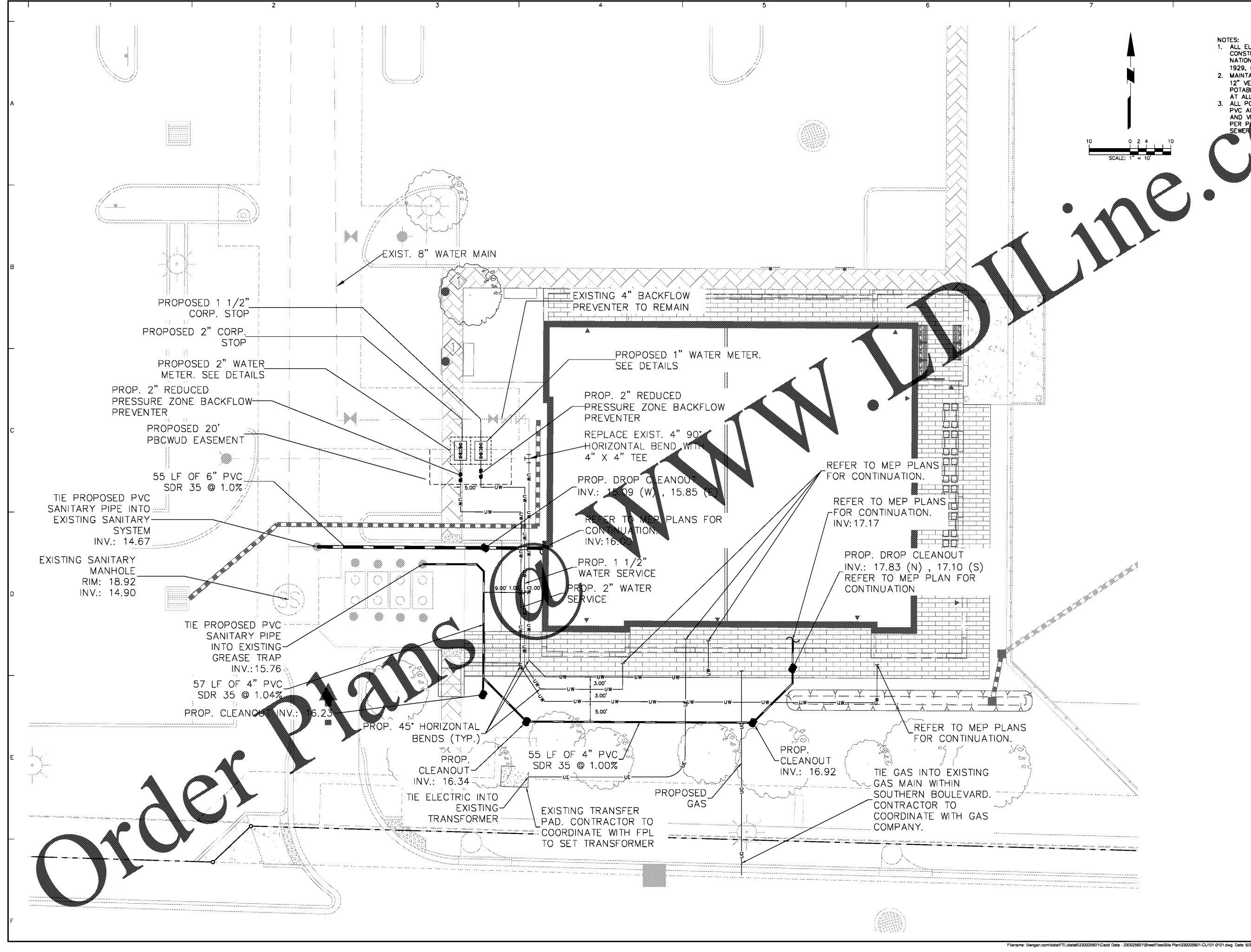
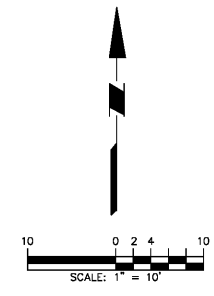


- NOTES:
- ALL ELEVATIONS SHOWN ON THE CONSTRUCTION DRAWINGS ARE BASED ON NATIONAL GEODATIC VERTICAL DATUM OF 1929, (N.G.V.D.), UNLESS OTHERWISE NOTED.
  - MAINTAIN 5' HORIZONTAL SEPARATION AND 12" VERTICAL SEPARATION BETWEEN POTABLE WATER LINES AND STORM SEWERS AT ALL TIMES.
  - ALL POTABLE WATER LINES TO BE SCH 40 PVC AND POTABLE WATER HORIZONTAL AND VERTICAL BONDS TO BE SCH 80 PVC PER PALM BEACH COUNTY WATER AND SEWER STANDARD.



Order Plans

Date	Description	No.
REVISIONS		
SIGNATURE		DATE SIGNED
MICHAEL CARR PROFESSIONAL ENGINEER FL Lic. No. 72424		
<small>110 East Broward Boulevard, Suite 1500, Fort Lauderdale, FL 33301 T: 954.320.2100 F: 954.320.2101 www.langan.com Langan Engineering, Environmental, Surveying and Landscape Architecture, D.P.C. S.A. Langan Engineering, Environmental, Surveying and Landscape Architecture, D.P.C. Langan Engineering and Environmental Services, Inc. Langan CT, Inc. Langan International LLC Collectively known as Langan FL CERTIFICATE OF AUTHORIZATION No. 00008801</small>		
Project		
<b>SOUTHERN PALM CROSSING</b> VILLAGE OF ROYAL PALM BEACH		
PALM BEACH FLORIDA		
Drawing Title		
<b>WATER AND SEWER PLAN</b>		
Project No.	Drawing No.	
330025601	CU101	
Date	09/20/2017	
Scale	1" = 10'	
Drawn By	Checked By	
ARK	MC	