



DO NOT SCALE DRAWINGS
CONTRACTOR TO VERIFY
ALL EXISTING CONDITIONS AND
DIMENSIONS—NOTIFY ARCHITECT
OF ANY DISCREPANCIES PRIOR
TO BEGINNING CONSTRUCTION



JULY 5TH, 2018

NO | REVISION

DEL TACO STORE # DT2017
4525 JIMMY LEE SMITH PARKWAY
HIRAM, GA 30141
PAULTON COUNTY
1ST PERMIT SUBMITTAL 05-18-18
1ST BID SUBMITTAL 07-05-18

PROJECT NUMBER
2180148

SHEET NAME
**FLOOR PLAN
WATER**

SHEET NUMBER
P102

DATE OF THIS PRINTING - 7/3/2018

GENERAL NOTES

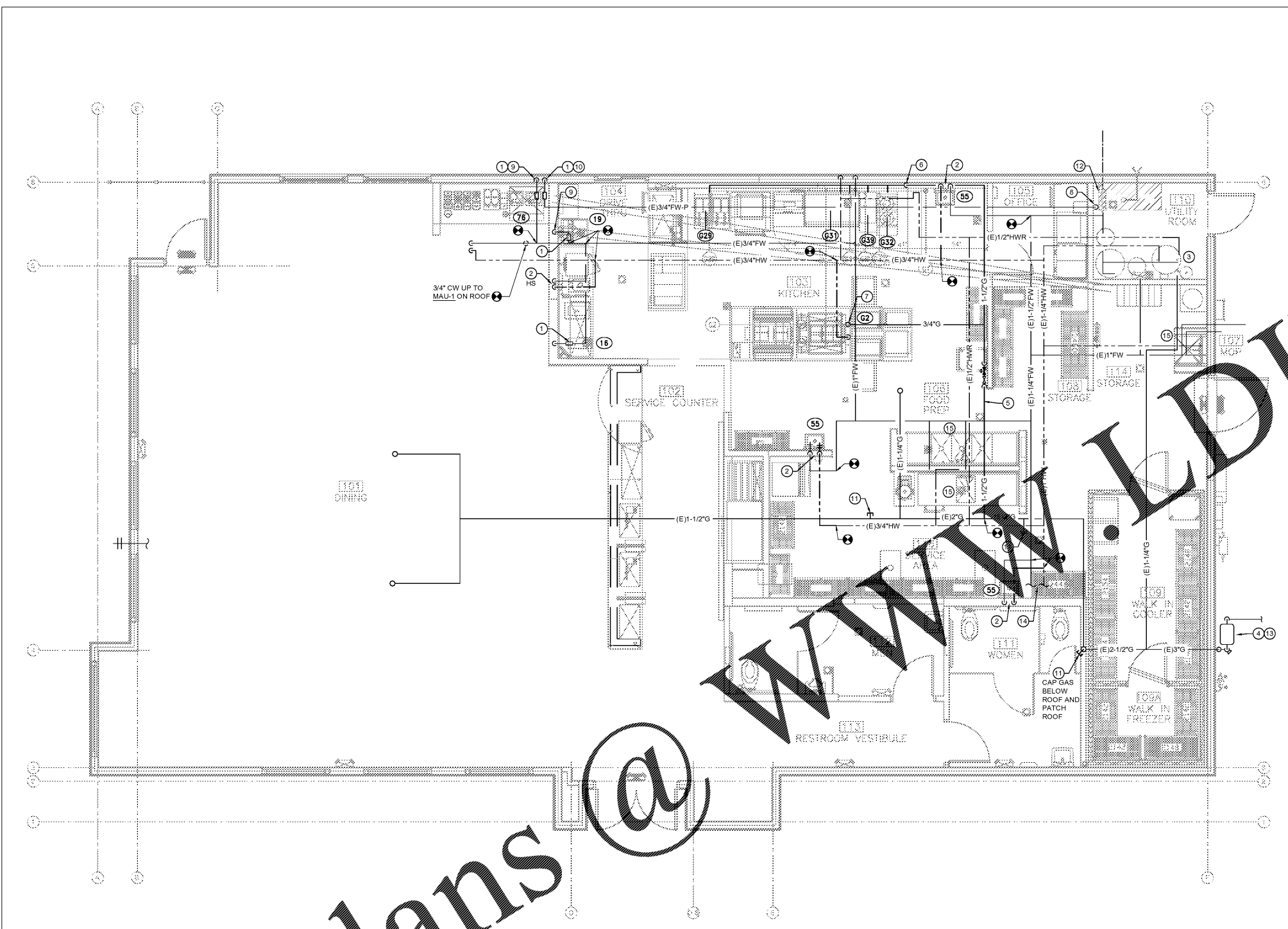
1. PROVIDE TESTING OF REDUCED PRESSURE BACKFLOW ASSEMBLIES AND OF DOUBLE CHECK VALVE BACKFLOW ASSEMBLIES BY TECHNICIAN LICENSED WITH THE AUTHORITY HAVING JURISDICTION.

KEYNOTES

1. PROVIDE RP (EQUAL TO WATTS MODEL #) AT COFFEE/TEA DISPENSERS AND WATER FILTER AND SUMP (EQUAL TO WATTS MODEL SS009) AT SODA DISPENSER. ROUTE INDIRECT WASTE (DRAIN) TO FLOOR SINK. RP IS NOT REQUIRED AT ICE MACHINE IF HAS CODE-APPROVED CUMULATIVE WATER / AIR GAP ON SUPPLY.
2. PROVIDE TESTING VALVE (TMV) BEHIND FIXTURE. 110" HW TO HANDSINKS AND WATTOIRES.
3. EXISTING WATER METER AND RECIRCULATING PUMP TO BE REUSED.
4. EXISTING GAS METER AND PRESSURE REGULATOR.
5. ROUTE 2" GAS PIPE TO MANUAL SHUT-OFF AND (EMERGENCY) SOLID VALVE. MOUNT ASSEMBLY FROM STRUCTURE HIGH ON WALL.
6. ROUTE GAS PIPE TIGHT TO WALL OR THROUGH WALL WITH FITTINGS LISTED FOR "CONCEALED LOCATIONS". DROP GAS PIPE TO MANIFOLD HEIGHT. VERIFY CONNECTION POINTS ON EQUIPMENT.
7. ROUTE 3/4" GAS PIPE DOWN THROUGH ROOF TO TACO COUNTER. CONNECT TO HOT WELLS.
8. 3/4" CW TO AND 3/4" FROM PHOSPHATE WATER FILTER (FW-P).
9. ROUTE 1/2" FW-C DOWN IN WALL AND UNDERCOUNTER TO BEVERAGE DISPENSER.
10. ROUTE 1/2" FW-P DOWN IN WALL TO ICE MAKER.
11. CAP EXISTING GAS LINE IN LOCATION SHOWN.
12. REPLACE EXISTING WATER FILTER WITH NEW. MAINTAIN ALL EXISTING CONNECTIONS IF POSSIBLE. MODIFY AS NEEDED.
13. CONTRACTOR TO VERIFY THAT EXISTING GAS METER AND CONNECTION TO BUILDING ARE ADEQUATE FOR NEW LOAD. REPAIR AND REPLACE AS NEEDED.
14. EXISTING PIPING AND CONNECTION POINTS IN THE BATHROOMS ARE TO REMAIN. ALL EXISTING FIXTURES ARE TO BE REPLACED WITH NEW IN EXISTING LOCATION. MAINTAIN ALL EXISTING CONNECTIONS. REPAIR, REPLACE, AND MODIFY AS NEEDED.
15. EXISTING FIXTURE TO BE REPLACED WITH NEW. MODIFY, REPAIR, AND REPLACE PIPING CONNECTIONS AS NEEDED.

FILTERED WATER NOTES:

- A. ICE MAKERS SHALL RECEIVE PHOSPHATE FILTERED WATER (FW-P).
- B. WATER DISPENSERS, COFFEE, TEA, AND BEVERAGE DISPENSERS SHALL RECEIVE CARBON FILTERED WATER (FW-C).
- C. LOCATE BACKFLOW PREVENTERS (RP) IN ACCESSIBLE LOCATIONS (FOR ANNUAL TESTING) AND ROUTE DRAINS TO NEAREST FLOOR SINK. RPS MAY BE LOCATED BELOW BEVERAGE COUNTERS WHERE FEASIBLE.



Order Plans @

SWED, B.C. 07/03/2018 11:46 AM
PRINTED BY: 7/3/2018 12:11 PM
2180148