

DO NOT SCALE DRAWINGS
CONTRACTOR TO VERIFY
ALL EXISTING CONDITIONS AND
DIMENSIONS - NOTIFY ARCHITECT
OF ANY DISCREPANCIES PRIOR
TO BEGINNING CONSTRUCTION



JULY 5TH, 2018

NO REVISION

DEL TACO STORE - DT2017
4525 JIMMY LEE SMITH PARKWAY
HIRAM, GA 30141
PAULTON COUNTY
1ST PERMIT SUBMITTAL 05-18-18
1ST BID SUBMITTAL 07-05-18

PROJECT NUMBER
2180148

SHEET NAME
**MEP
ROOF PLAN**

SHEET NUMBER
MEP001

DATE OF THIS PRINTING - 7/3/2018

MECHANICAL KEYNOTES

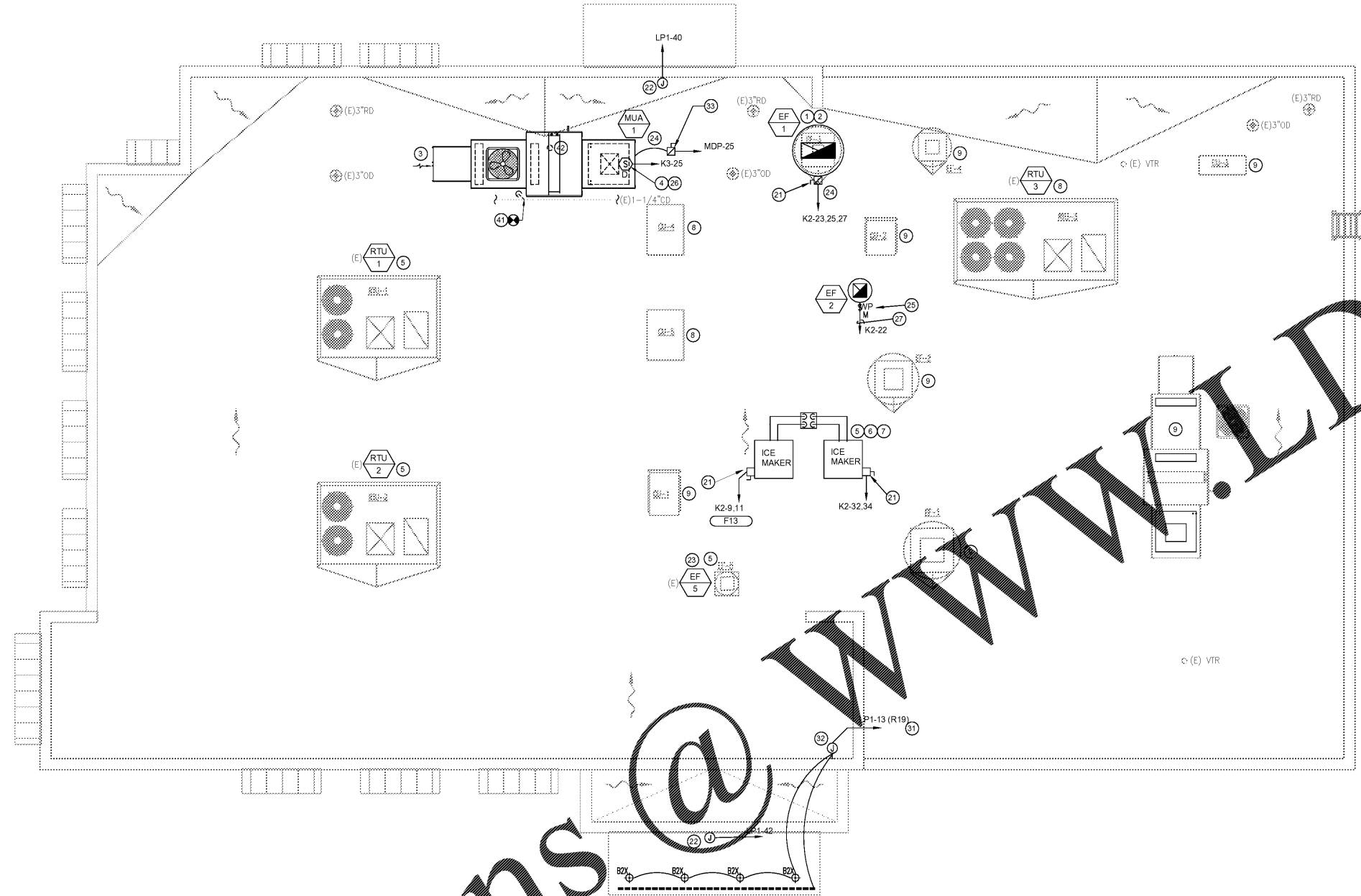
- 1 NEW ROOF MOUNTED TYPE 1 KITCHEN HOOD EXHAUST FAN ON EXISTING CURB. MODIFY EXISTING CURB AS NEEDED. TOP OF DISCHARGE OPENING SHALL BE HIGHER THAN TOP OF PARAPET AND/OR SCREEN WALL (TYP.)
- 2 PROVIDE 4-SIDED GREASE GUARD FOR EF-1.
- 3 OUTSIDE AIR INTAKE. MECHANICAL CONTRACTOR TO FIELD VERIFY ALL EQUIPMENT LOCATIONS. FIELD FABRICATE OUTSIDE AIR INLET EXTENSION WHERE REQUIRED TO MAINTAIN MINIMUM DISTANCE REQUIREMENTS BETWEEN ALL AIR INTAKES AND EXHAUST (10'-0" FROM OUTSIDE EDGE OF FAN DISCHARGE).
- 4 DUCT MOUNTED SMOKE DETECTOR
- 5 REMOTE CONDENSER FOR KITCHEN REFRIGERATION EQUIPMENT. REFERENCE KITCHEN DRAWINGS FOR INSTALLATION REQUIREMENTS.
- 6 PROVIDE A SINGLE PREFAB ROOF PENETRATION WITH SLEEVE
- 7 PROVIDE 3/4" ARMSTRONG ARMAFLEX INSULATION ON REFRIGERATION LINES.
- 8 EXISTING ROOFTOP EQUIPMENT TO REMAIN IN USE.
- 9 EXISTING ROOFTOP EQUIPMENT TO BE ABANDONED IN PLACE. CAP ANY EXISTING PIPING AND/OR PILING BELOW ROOF DECK.

ELECTRICAL KEYNOTES

- 21 PROVIDE 30 AMP NON-FUSED DISCONNECT IN NEMA 3R ENCLOSURE AT HVAC EQUIPMENT ON ROOF.
- 22 PROVIDE CIRCUIT AND MEANS OF DISCONNECT FOR DEL TACO SIGNAGE PER LOCAL AUTHORITY HAVING JURISDICTION AND NEC 600.6. PROVIDE DISCONNECT CAPABLE OF BEING LOCKED IN THE OPEN POSITION AS REQUIRED. CIRCUIT VIA TIMELOCK/PHOTOCELL. VERIFY EXACT LOCATION WITH OWNER PRIOR TO INSTALLATION.
- 23 ROOF MOUNTED TOILET EXHAUST FAN INTERLOCKED WITH TOILET LIGHTING CIRCUIT. REFER TO SHEET E101 FOR FURTHER COORDINATION.
- 24 MUA-1 KITCHEN HOOD SUPPLY AND EF-1, EF-2 ARE STARTED SIMULTANEOUSLY WITH RTU-1 BY THE HOOD CONTROL PANEL. UPON FIRE ALARM SIGNAL OR FIRE SUPPRESSION SYSTEM ACTUATION, THE SUPPLY FANS FOR RTU-1 AND MUA-1 SHALL SHUT DOWN. THE EXHAUST FAN EF-1 & EF-2 SHALL CONTINUE TO OPERATE. GAS AND ELECTRIC TO COOKING EQUIPMENT SHALL BE SHUT DOWN.
- 25 NOT USED.
- 26 PROVIDE DUCT SMOKE DETECTOR WIRED FOR THE SHUTDOWN OF THE MECHANICAL UNIT UPON DETECTION OF SMOKE. PROVIDE REMOTE TEST SWITCH AND INDICATOR LIGHT IN MANAGERS OFFICE.
- 27 TACO BAR FAN EF-2 SHALL BE CONNECTED TO TACO BAR PANEL K4 AND WIRED THROUGH CONTROL SWITCH FURNISHED WITH TACO BAR ASSEMBLY.
- 28 NOT USED.
- 29 NOT USED.
- 30 NOT USED.
- 31 NUMBER IN PARENTHESIS SHOWS LIGHTING CONTROL PANEL 'LCP' RELAY OR DIMMER MODULE NUMBER. REFER TO SHEET E303 FOR LCP SCHEDULE.
- 32 TYPE 'N' FIXTURE - LED TAPE LIGHTING ON CANOPY. JUNCTION BOX DRIVER CONNECTION EVERY 30'-0".
- 33 PROVIDE 30 AMP FUSED DISCONNECT WITH 15AMP FUSES IN NEMA 3R ENCLOSURE AT HVAC EQUIPMENT ON ROOF.
- 34 NOT USED.
- 35 NOT USED.
- 36 NOT USED.

PLUMBING KEYNOTES

- 41 CONNECT NEW 1-1/4" CONDENSATE DRAIN TO EXISTING PIPING ON ROOF. REPAIR, REPLACE, AND/OR RE-ROUTE EXISTING CONDENSATE PIPING AS NEEDED.
- 42 3/4" CW UP FROM BELOW. CONNECT TO MUA-1



SWED BY: ERIC 5/15/2018 10:16 AM
PRINTED BY: ERIC 7/3/2018 1:15 PM
2180148_MEP001_Rev1.dwg

Order Plans @ www.welding.com